

INSTRUCTIONS

1. Original and/or subsequent record used to evaluate the corner position.
2. Description of evidence found, note discrepancies in the record, state method of establishing lost or obliterated corners.
3. Description of monument and accessories set to perpetuate the corner position.
4. Sketch of corner, show all pertinent data which can best be shown in a sketch example, corner marking, topography ties, position of accessories, etc.
5. Certification must be signed and sealed by Land Surveyor registered in the State of Montana.
6. Fill in Cross Index & Section Diagram at bottom of sheet.

CERTIFIED CORNER RECORDATION

Corner _____ Sec. Cor. 7,8,17&18 T. 31 N R. 31 W P.M.M. Lincoln County

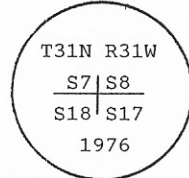
I. 1901 GLO RECORD: Set a limestone, 26 x 12 x 7 ins., 20 ins. in the ground, for cor. of secs. 7,8,17 and 18, mkd. with 4 notches on S. and 5 notches on E. edges and mkd. 4 bearing trees.

1976 BLM REMONUMENTATION: The corner of secs. 7,8,17 and 18, determined from the remains of the original bearing trees:

- A fir, 10 ins. diam., bears N.26° 40'E., 25 lks. dist., mkd. T31N R31W S8 BT.
- A pine stump, bears S.78° 10'E., 38 lks. dist., with the bottom portion of a blaze visible.
- A fir root crown, 18 ins. diam., bears S.09° 30'W., 17 lks. dist.
- A fir root crown, 12 ins. diam., bears N.26° 5'W., 28 lks. dist.

At the corner point:

Set an iron post, 30 ins. long, 2 1/2 ins. diam.,
24 ins. in the ground, with brass cap mkd.:



from which new bearing trees:

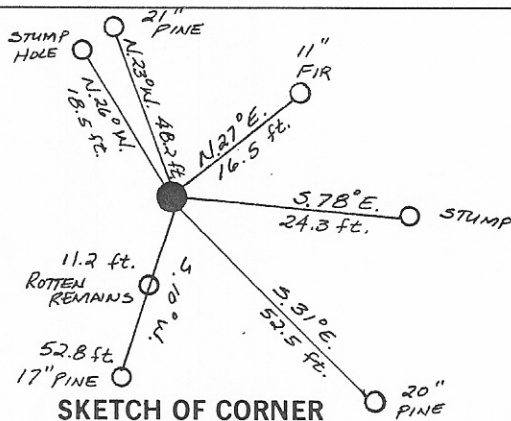
- A pine, 16 ins. diam., bears S.32° E., 79 lks. dist., mkd. T31N R31W S17 BT.
- A larch, 16 ins. diam., bears S.09° W., 80 lks. dist., mkd. T31N R31W S18 BT.
- A pine, 18 ins. diam., bears N.23° 45'W., 73 lks. dist., mkd. T31N R31W S7 BT.

Raise a flat mound of stone, 3 ft. diam., around the iron post.

II. Found a BLM monument, protruding 6 ins. above ground, with a brass cap marked as described in the BLM record, from which the following references:

- A Fir, 11 ins. diam., bears N.27° E., 16.5 ft. (25 lks.) dist., burnt healed face.
- A Stump, 3 ft. high, bears S.78° E., 24.3 ft. (36.8 lks.) dist., visible marks: BT on a charred face.
- A Pine, 20 ins. diam., bears S.31° E., 52.5 ft. (79.5 lks.) dist., visible marks: T31N R31W S17 BT.
- Rotten remains, bears S.10° W., 11.2 ft. (17.0 lks.) dist.
- A Pine, 17 ins. diam. and 6 ft. high, bears S.10° W., 52.8 ft. (80 lks.) dist., visible marks: T31N R31W S18 BT
- A Stump hole with rotten remains, bears N.26° W., 18.5 ft. (28.0 lks.) dist.
- A Pine, 21 ins. diam., bears N.23° W., 48.2 ft. (73.0 lks.) dist., visible marks: T31N R31W S7 BT

III. Set a guard post, with a "Survey Marker" decal attached, 2 ft. North from corner. Painted red bands around the bearing trees and attached "Land Survey Monument" and "Bearing Tree" signs.



CERTIFICATION

I, Steven A. Boyer
certify the information shown herein is true and correct.

Steven A. Boyer
Signature Ground Party Chief

I, Thomas G. Hill
certify that this Corner Record correctly represents work performed by me or under my direction in compliance with the "Corner Recordation Act" (20-22-101, et seq., M.C.A.)

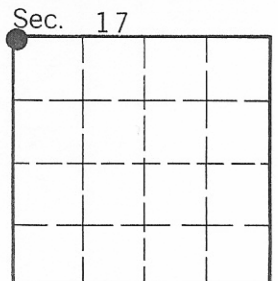
Thomas G. Hill
Signature of Surveyor & Seal

Date: 12/86 Reg. No. 5612-S

Employer: U.S.F.S.

Office of Clerk and Recorder, County of Lincoln. This "corner record" was filed for record on Jan 7, 1987 was noted on the cross-index plat and is assigned page No. 3471, in book No. _____

Janet Et. Sigel by Bill Smith
County Official Deputy



Cross Index No. J-5 T. _____ R. _____ P.M.M.

• - corner this sheet