

INSTRUCTIONS

1. Original and/or subsequent record used to evaluate the corner position.
2. Description of evidence found, note discrepancies in the record, state method of establishing lost or obliterated corners.
3. Description of monument and accessories set to perpetuate the corner position.
4. Sketch of corner, show all pertinent data which can best be shown in a sketch example, corner marking, topography ties, position of accessories, etc.
5. Certification must be signed and sealed by Land Surveyor registered in the State of Montana.
6. Fill in Cross Index & Section Diagram at bottom of sheet.

CERTIFIED CORNER RECORDATION

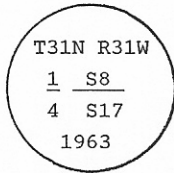
Corner 1/4 Cor. 8&17 T. 31 N R. 31 W P.M.M. Lincoln County

I. 1901 GLO RECORD: Set a limestone, 14 x 8 x 7 ins., 9 ins. in the ground, for 1/4 sec. cor., marked 1/4 on N. face and marked 2 BT's.

1963 BLM REMONUMENTATION: The 1/4 sec. cor. of secs. 8 and 17, monumented with a agrillite stone, 14 x 8 x 6 ins., firmly set and mkd. 1/4 on the N. face.

At the corner point:

Set an iron post, 30 ins. long, 2 1/2 ins. diam., 26 ins. in the ground, with brass cap mkd.



from which the remains of the original bearing trees:

A stump, 26 ins. diam., bears S.03° W., 148 lks. dist., visible marks BT.
(Record: S.03° W., 48 lks.)

A larch, 34 ins. diam., bears N.40° W., 70 lks. dist., mkd. 1/4 S8 BT.
(Record: N.40° 20' W., 70 lks.)

The new bearing trees:

A pine, 6 ins. diam., bears N.24° 45' E., 25 lks. dist., mkd. 1/4 S8 BT.

A larch, 8 ins. diam., bears S.18° E., 19 lks. dist., mkd. 1/4 S17 BT.

Bury the original stone alongside and raise a flat mound of stone, 3 ft. diam., around the iron post.

II. Found a BLM monument, protruding 4 ins. above ground, with a brass cap marked as described in the BLM record, from which the following references:

A pine, 8 ins. diam., bears N.25° E., 16.5 ft. (25 lks.) dist., visible marks: 1/4 S8 BT

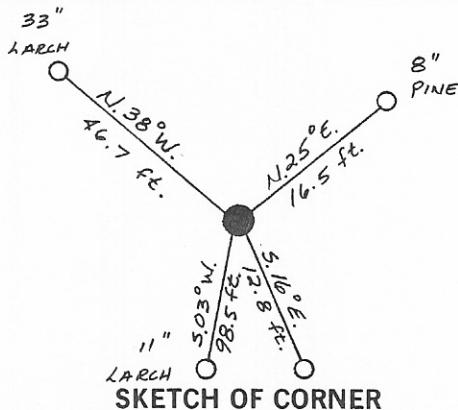
A larch, 11 ins. diam., bears S.16° E., 12.8 ft. (19.4 lks.) dist., healed face.

A larch stump, bears S.03° W., 98.5 ft. (149.2 lks.) dist., visible marks: BT

A larch, 33 ins. diam., bears N.38° W., 46.7 ft. (70.8 lks.) dist., visible marks: 1/4 S8 (Record: 40 in. diam. larch)

III. Painted red bands around the bearing trees and attached "Land Survey Monument" and "Bearing Tree" signs.

Set a guard post, with a "Survey Marker" decal attached, 2 ft. East from corner.



SKETCH OF CORNER

CERTIFICATION

I, Steven A. Boyer
certify the information shown hereon is true and correct.

Steven A. Boyer
Signature Ground Party Chief

I, Thomas Thomas
certify that this Corner Book correctly represents work performed by me or under my direction in compliance with the "Corner Recordation Act" (78-2-101 et seq., M.C.A.)

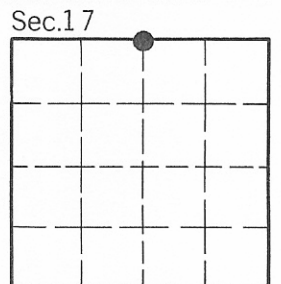
Thomas Thomas
Signature of Surveyor & Seal

Date: 12/86 5012-S

Employer: U.S.F.S.

Office of Clerk and Recorder, County of Lincoln. This "corner record" was filed for record on Jan 7, 1987 was noted on the cross-index plat and is assigned page No. 3472, in book No. _____

Janet B. Segel by Bill Smith
County Official *Deputy*



Cross Index No. J-7 T. _____ R. _____ P.M.M.

• - corner this sheet