

INSTRUCTIONS

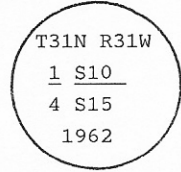
1. Original and/or subsequent record used to evaluate the corner position.
2. Description of evidence found, note discrepancies in the record, state method of establishing lost or obliterated corners.
3. Description of monument and accessories set to perpetuate the corner position.
4. Sketch of corner, show all pertinent data which can best be shown in a sketch example, corner marking, topography ties, position of accessories, etc.
5. Certification must be signed and sealed by Land Surveyor registered in the State of Montana.
6. Fill in Cross Index & Section Diagram at bottom of sheet.

CERTIFIED CORNER RECORDATION

Corner 1/4 Cor. S 10 & 15 T. 31 N R. 31 W P.M.M. Lincoln County

- I. 1901 GLO RECORD: Set a limestone, 14 x 8 x 6 ins., 9 ins. in ground, for 1/4 sec. cor., mkd. 1/4 on N. face and marked 2 bearing trees.
- 1962 BLM REMONUMENTATION: The 1/4 sec. cor. of secs. 10 and 15, monumented with a limestone, 14 x 8 x 6 ins., firmly set and mkd. as described in the official record, and witnessed by one of the original bearing trees. Set an iron post, 30 ins. long, 2 1/2 ins. diam., 25 ins. in the ground, with brass cap marked:

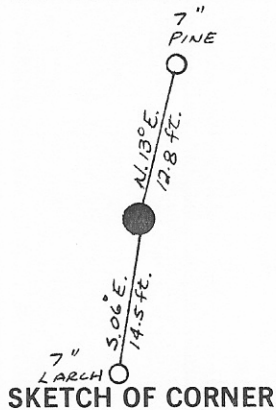
Established one new bearing tree.



- 1970 STANLEY J. SKOUSEN 2532-S RECORDATION: Found BLM brass cap firmly set, from which:
- A fir, 20 ins. diam., bears N.60° E., 100 lks. dist., visible marks BT. (Record)
 - A fir, 20 ins. diam., bears S.04° E., 82 lks. dist., mkd. 1/4 S15 BT. (Record)
- These 2 BT's will be destroyed by reconstruction of the Pipe Creek Road #68.
- New BT's:
- A 6 in. lodgepole pine, bears N.12° 30' E., 19 lks. dist., mkd. RM.
 - A 6 in. larch, bears S.04° W., 22 lks. dist., mkd. RM.
- Placed new bearing tree and attention signs at corner and painted iron post and rock mound.

- II. Found a BLM monument, protruding 7 ins. above ground, with a brass cap marked as described in the BLM record, from which the following references:
- A lodgepole pine, 7 ins. diam., bears N.13° E., 12.8 ft. (19.4 lks.), RM visible markings.
 - No evidence of N.60° E. fir because it falls in the ditch of Pipe Creek Road #68.
 - No evidence of S.61° E. pine because it falls in Pipe Creek Road #68.
 - No evidence of S.04° E. fir because it falls in Pipe Creek Road #68.
 - A larch, 7 ins. diam., bears S.06° E., 14.5 ft. (22 lks.), healed face.

- III. Set a guard post, with a "Survey Marker" decal attached, 3 ft. West from corner. Painted red bands around the bearing trees and attached "Land Survey Monument" and "Bearing Tree" signs.



CERTIFICATION

I, Steven A. Boyer
 certify the information shown herein true and correct.

Steven A. Boyer
 Signature of Ground Party Chief

I, Thomas H. Hill
 certify that this Corner Record correctly represents work performed by me or under my direction in compliance with the "Corner Recordation Act" (70-22-101, et seq., M.C.A.)

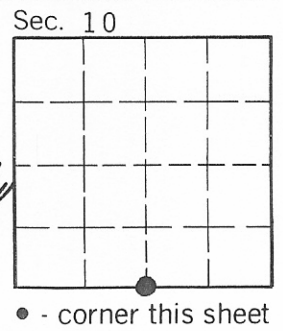
Thomas H. Hill
 Signature of Surveyor & Seal

Date: 12/86 Reg. No. 5612-S

Employer: U.S.F.S.

Office of Clerk and Recorder, County of Lincoln. This "corner record" was filed for record on Jan 7, 1987 was noted on the cross-index plat and is assigned page No. 3466, in book No. _____

Janet B. Sargent by Bill Sargent
 County Official



Cross Index No. J-15 T. _____ R. _____ PMM