

INSTRUCTIONS

1. Original and/or subsequent record used to evaluate the corner position.
2. Description of evidence found, note discrepancies in the record, state method of establishing lost or obliterated corners.
3. Description of monument and accessories set to perpetuate the corner position.
4. Sketch of corner, show all pertinent data which can best be shown in a sketch example, corner marking, topography ties, position of accessories, etc.
5. Certification must be signed and sealed by Land Surveyor registered in the State of Montana.
6. Fill in Cross Index & Section Diagram at bottom of sheet.

CERTIFIED CORNER RECORDATION

Corner NW Cor. Sec. 2 T. 30N R. 31W P.M.M. Lincoln County

CORNER RECORD: GLO – 1893 D. Mumbrue

Set a post, 4' long, 4" square, 24" in the ground for corner to Sections 2, 3, 34 and 35, marked T31N S35 on northeast, R31W S2 on southeast, T30N S3 on southwest, and S34 on northwest faces, with 2 notches on east and 4 notches on west edges; from which:

- A Pine, 24" diameter, bears N3°E, 95 links (62.7 feet) distant, marked T31N R31W, S35 BT.
- A Pine, 30" diameter, bears S9°E, 35 links (23.1 feet) distant, marked T30N R31W S2 BT.
- A Pine, 10" diameter, bears S50°W, 118 links (77.88 feet) distant, marked T30N R31W S3 BT.
- A Pine, 36" diameter, bears N36¼°W, 138 links (91.08 feet) distant, marked T31N R31W S34 BT.

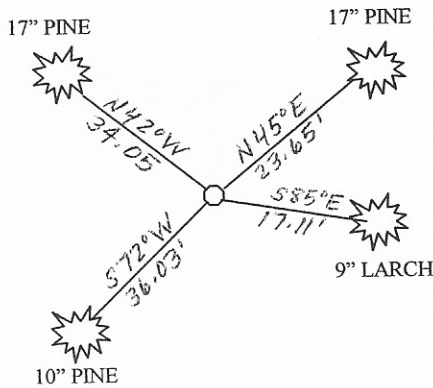
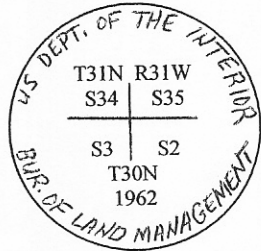
BLM – 1962

The corners of Sections 2, 3, 34, and 35, on the south boundary of the township, as determined from the remains of an original bearing tree. At corner point, set an iron post, 30" long, 2½" diameter, 26" in the ground, in concrete, with brass cap marked as shown below; from which:

The remains of an original bearing tree stump hole bears S9°E, 35 links (23.1 feet) distant.
No bearing trees were reported.

FOUND:

- Found 3¼" brass cap, marked as shown below, on 2½" galvanized pipe, 0.2' above ground; from which:
- A 17" Pine, with visible scribing, bears N42°W, 34.05 feet distant, with bearing tree tag attached.
 - A 17" Pine, with visible scribing, bears N45°E, 23.65 feet distant, with bearing tree tag attached.
 - A 9" Larch, with visible scribing, bears S85°E, 17.11 feet distant, with bearing tree tag attached.
 - A 10" Pine, with visible scribing, bears S72°W, 36.03 feet distant, with bearing tree tag attached.



SKETCH OF CORNER

CERTIFICATION

I, James R. Staples
Certify the information shown herein is true and correct.

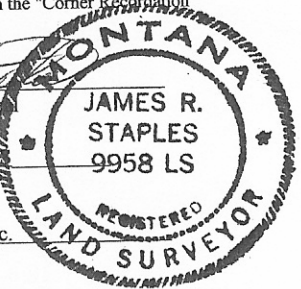
James R. Staples
Signature Ground Party Chief

I, James R. Staples
certify that this Corner Record correctly represents work performed by me or under my direction in compliance with the "Corner Recordation Act" (70-22-101, et seq., M.C.A.)

James R. Staples
Signature of Surveyor & Seal

Date: 10/16/07 Reg. No. 9958LS

Employer: J.R.S. Surveying, Inc.



Office of Clerk and Recorder, County of _____ . This "corner
record" was filed for record on _____ 206790 BOOK: CCR CC&R'S PAGE: 11160 Pages: 1
was noted on the cross-index plat and STATE OF MONTANA LINCOLN COUNTY
book no. _____ RECORDED: 10/16/2007 9:41 KOI: CC&R'S
TAMMY D. LAUER CLERK AND RECORDER
FEE: \$0.00 BY: *Deanne Stearns*
TO: J.R.S. SURVEYING P.O. BOX 1050, LIBBY, MONTANA 59923
County Official

	2		

Cross Index No. A17 T. 30N R. 31W PMM

• - Corner this sheet