

INSTRUCTIONS

1. Original and/or subsequent record used to evaluate the corner position.
2. Description of evidence found, note discrepancies in the record, state method of establishing lost or obliterated corners.
3. Description of monument and accessories set to perpetuate the corner position.
4. Sketch of corner, show all pertinent data which can best be shown in a sketch example, corner marking, topography ties, position of accessories, etc.
5. Certification must be signed and sealed by Land Surveyor registered in the State of Montana.
6. Fill in Cross Index & Section Diagram at bottom of sheet.

CERTIFIED CORNER RECORDATION

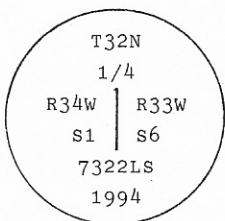
Corner W 1/4 Cor. of Sec 6 T. 32 N. R. 33 W. P.M.M. Lincoln County

I. 1903 G.L.O. original record by A. B. BENEDICT: Set a pine post, 3 ft. long, 4 ins. square, 24 ins. in the ground, for 1/4 sec. cor. marked 1/4 S6 on E., and 1 on W. faces; from which:

- A pine, 12 ins. diam., bears S43°30'E, 62 lks. dist., mkd 1/4 S6 BT.
- A fir, 7 ins. diam., bears S71°30'W, 30 lks. dist., mkd 1/4 S1 BT."

II. No monument or accessories found. (The area has been logged and burned.)

III. At the position determined by single proportion measurement, set a 2 1/2 in. diam., 30 in. long, aluminum pipe, 26 ins. in the ground, with a 3 1/4 in. diam. alum. cap mkd. as shown:



Established two new bearing trees:

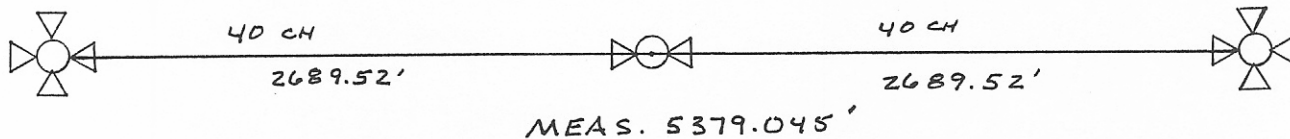
- A larch, 10 ins. diam., bears N34°E, 60.5 ft. dist. mkd. 1/4 S6 BT.
- A fir, 19 ins. diam., bears S55°E, 69.2 ft. dist., mkd. 1/4 S6 BT.
- (No trees available in Sec. 1 due to logging.)

Raise a collar of stone around monument.

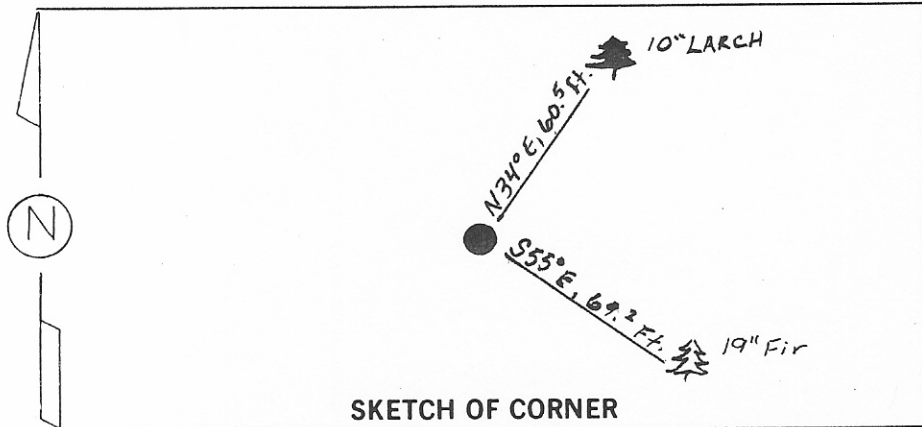
Painted a red band around bearing trees and attached Land Survey Monument and Bearing Tree signs.

Magnetic Declination: 20° East.

S1
RECORD 80 CH



S6



CERTIFICATION

I. Thomas M. Hommel
certify the information shown herein is true and correct.
Thomas M. Hommel
Signature Ground Party Chief

I. Alvah F. Hughes
certify that this Corner Record correctly represents work performed by me or under my direction in compliance with the "Corner Recordation Act" (70-22-101, et seq., M.C.A.)
Alvah F. Hughes
Signature of Surveyor & Seal

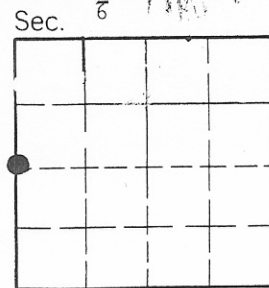
Date: 12/15/94 Reg. No. 7322LS

Employer: U.S. FOREST SERVICE

Office of Clerk and Recorder, County of LINCOLN. This "corner record" was filed for record on JULY 29, 1997 was noted on the cross-index plat and is assigned page No. 9768, in book No. _____

CORAL M. CUMMINGS
County Official

By DUB



• - corner this sheet

Cross Index No. C-01 T. 32N R. 33W P.M.M.