

INSTRUCTIONS

1. Original and/or subsequent record used to evaluate the corner position.
2. Description of evidence found, note discrepancies in the record, state method of establishing lost or obliterated corners.
3. Description of monument and accessories set to perpetuate the corner position.
4. Sketch of corner, show all pertinent data which can best be shown in a sketch example, corner marking, topography ties, position of accessories, etc.
5. Certification must be signed and sealed by Land Surveyor registered in the State of Montana.
6. Fill in Cross Index & Section Diagram at bottom of sheet.

**CERTIFIED CORNER RECORDATION**

Corner 17,18,19 & 20 T. 31N R. 33W P.M.M. Lincoln County

Record 1967. BLM Remonumentation - Corner position monumented with the original post, 4 ft. long, 4 ins. square, and witnessed by remains of the original bearing trees.  
At the corner point, set an iron post 30 in. long, 2½ ins. diam., 24 ins. in the ground, with brass cap mkd. (see diagram below) from which the original bearing trees:

- A pine stump, 12" diam., bears N 69°E, 89 Lks. dist., mkd. T31N, R33W, S 17 B.T. (Record)
- A pine stump, 12" diam., bears S 71°E, 18 Lks. dist., mkd. T31N, R33W, S 20 B.T. (Record)
- A pine stump, 12" diam., bears S 54°W, 15 Lks. dist., mkd. T31N, R33W, S 19 B.T. (Record)
- A pine, 18" diam., bears N 16 1/4°W, 30 Lks. dist, mkd. T31N, R33W, S 18 B.T. (Record)

New bearing trees:

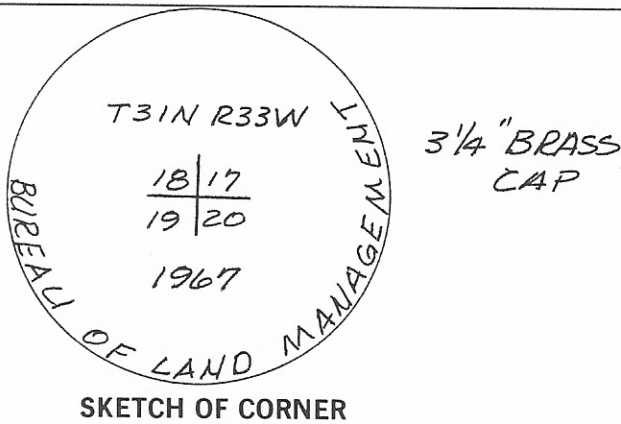
- A fir, 9" diam., bears N 72 1/2°E, 10 Lks. dist., mkd. T31N, R33W, S 17 B.T.
- A pine, 9" diam., bears S 70°E, 70 Lks. dist., mkd. T31N, R33W, S 20 B.T.

Bury original post along side iron post

Found 1989. BLM brass cap as described from which:

- A pine, 16" diam., bears S 54°W, 9.9 feet with blazed and scribed face (1893 B.T.)
- A pine, 24" diam., bears N 16°W, 19.8 feet with blazed and scribed face (1893 B.T.)
- A fir, 13" diam., bears N 67° E, 616 feet blazed and scribed (1967 B.T.)
- A pine, 15" diam., bears S 70° E, 46.2 feet blazed and scribed (1967 B.T.)

See Certificate of Survey Number 1734 for ties to other corners.



CERTIFICATION

I, Mark Roedel  
certify the information shown herein is true and correct.

---

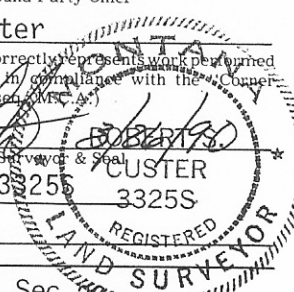
Signature Ground Party Chief

I, Robert S. Custer  
certify that this Corner Record correctly represents work performed by me or under my direction in compliance with the Corner Recordation Act (70-22-101, et seq. M.S.C.A.)

*Robert S. Custer*  
Signature of Surveyor & Seal

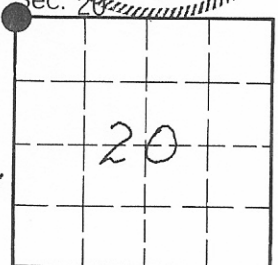
Date: 10/89 Reg. No. 3325S 3325S

Employer: MDOH



Office of Clerk and Recorder, County of Lincoln. This "corner record" was filed for record on March 28, 1990 was noted on the cross-index plat and is assigned page No. 4236, in book No. \_\_\_\_\_

*Janet BF Sugil by Dixie Bealoff*  
County Official



Cross Index No. N-5 T. 31N R. 33W P.M.M. • - corner this sheet