

INSTRUCTIONS

1. Original and/or subsequent record used to evaluate the corner position.
2. Description of evidence found, note discrepancies in the record, state method of establishing lost or obliterated corners.
3. Description of monument and accessories set to perpetuate the corner position.
4. Sketch of corner, show all pertinent data which can best be shown in a sketch example, corner marking, topography ties, position of accessories, etc.
5. Certification must be signed and sealed by Land Surveyor registered in the State of Montana.
6. Fill in Cross Index & Section Diagram at bottom of sheet.

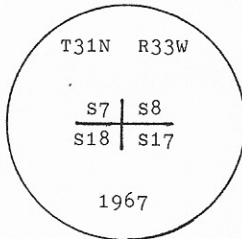
CERTIFIED CORNER RECORDATION

Corner SW Sec. Cor. of Sec. 8 T. 31 N. R. 33 W. P.M.M. Lincoln County

I. 1893 G.L.O. original record by D. P. MUMBRUE: Set a wooden post and 4 bearing trees.

1967 B.L.M. remonumentation record by J. E. FRENCH: The corner of secs. 7, 8, 17 and 18, as determined from the remains of the original bearing trees.

At the corner point, set an iron post, 30 ins. long, 2 1/2 ins. diam., 24 ins. in the ground, with brass cap mkd. as shown:



Established three new bearing trees referenced below.

II. Found a 2 1/2 in. diam. iron pipe, 4 ins. above ground, firmly set, with B.L.M. brass cap mkd. as shown above, from which:

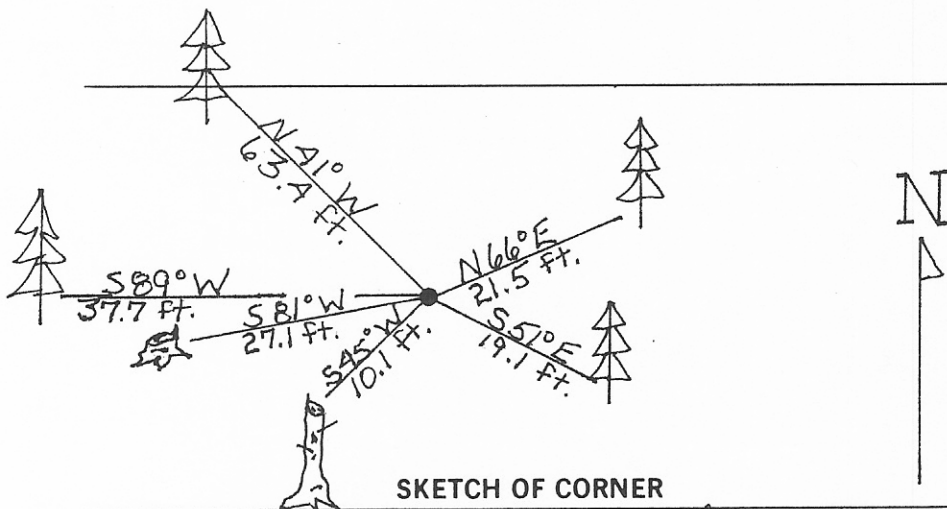
- No evidence found of orig. G.L.O. BT at N25 3/4° E, 40 lks. dist..
- A larch, 15 ins. diam., bears N56° E, 21.5 ft. dist., healed face. (B.L.M.- record: 21.1 ft.)
- A larch, bears S51° E, 19.1 ft. dist., healed face. (G.L.O.- record)
- A larch snag, 10 ins. diam., bears S45° W, 10.1 ft. dist., healed face. (G.L.O.- record: 10.5 ft)
- A rotten fir stump, bears S81° W, 27.1 ft. dist., with log mkd "T31N R33W S18 BT". (B.L.M.- record)
- A fir, 17 ins. diam., bears N41° W, 63.4 ft. dist., healed face. (B.L.M.- record: 64.0 ft.)
- No evidence found of orig. G.L.O. BT at N41° W, 50 lks. dist..

III. Established one new bearing tree:

A fir, 16 ins. diam., bears S89° W, 37.7 ft. dist., mkd. T31N R33W S18 BT.

Painted a red band around bearing trees and attached Land Survey Monument and Bearing Tree signs.

Magnetic Declination: 20° East.



SKETCH OF CORNER

CERTIFICATION

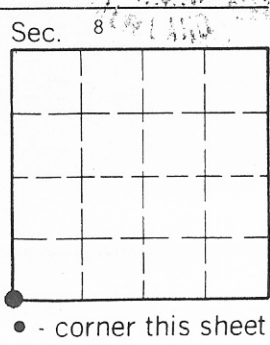
I, Thomas Hommel
certify the information shown herein is true and correct
Thomas Hommel
Signature Ground Party Chief

I, Alvah F. Hughes
certify that this Corner Record correctly represents work performed by me or under my direction in compliance with the "Corner Recordation Act" (70-22-101, et seq., M.C.A.).
Alvah F. Hughes
Signature of Surveyor & Seal

Date: 12/06/94 Reg. No. 7322LS

Employer: U.S. FOREST SERVICE

Office of Clerk and Recorder, County of Lincoln. This "corner record" was filed for record on May 3, 1995 was noted on the cross-index plat and is assigned page No. 7308, in book No. _____, in Coral M. Cumming By DB County Official



Cross Index No. J-5 T. 31N R. 33W P.M.M.