

INSTRUCTIONS

1. Original and/or subsequent record used to evaluate the corner position.
2. Description of evidence found, note discrepancies in the record, state method of establishing lost or obliterated corners.
3. Description of monument and accessories set to perpetuate the corner position.
4. Sketch of corner, show all pertinent data which can best be shown in a sketch example, corner marking, topography ties, position of accessories, etc.
5. Certification must be signed and sealed by Land Surveyor registered in the State of Montana.
6. Fill in Cross Index & Section Diagram at bottom of sheet.

CERTIFIED CORNER RECORDATION

Corner 1/4 20/29 T. 31N R. 33W P.M.M. Lincoln County

Record 1965 BLM Remonumentation.

Set an iron post, 30 ins. long, 2 1/2 ins. diam., 24 ins. in the ground, with bronze cap marked (see diagram below) from which:

Original bearing trees:

Stump, 22" diam., bears S 72°E 12 Lks. (7.9'), mkd. 1/4 S B.T. (Record)

Stump, 12" diam., bears N 58 3/4 W 42 Lks. (27.7'), 4 S. B.T. (Record)

New bearing trees:

A larch, 7" diam., bears S 40°E 55 Lks. (36.3'), mkd. 1/4 S 29 B.T.

A larch, 9" diam., bears N 49°W 23 Lks. (15.2'), mkd. 1/4 S 20 B.T.

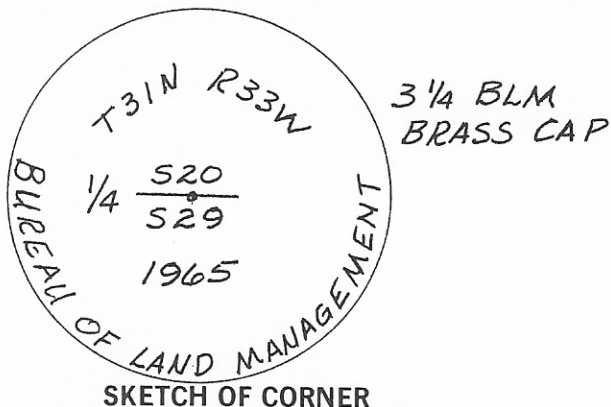
Record 1977. Surveyor Marquardt 2989 ES found BLM brass cap and new bearing trees. He also located two additional reference monuments as follows:
A 10" fir bears N 22° E to center of tree and 14.02 feet to a spike in the side of tree.

A 12" tamarack bears S 55°E to center of tree and 41.70 feet to spike in side of tree.

Found 1989. BLM brass cap, marked as per diagram below, 8" above ground with evidence of all bearing trees substantially as described in the record.

No new references established.

See Certificate of Survey Number 1734 for ties to other corners.



CERTIFICATION

I, Mark Roedel
certify the information shown herein is true and correct.

Signature Ground Party Other

I, Robert S. Custe
certify that this Corner Record correctly represents work performed by me or under my direction in compliance with the "Corner Recordation Act" (70-29101, 6/28/87, M.C.A.)

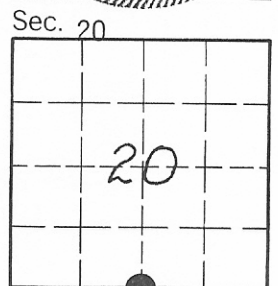
Robert S. Custe
Signature of Surveyor & Reg. No. 3325S

Date: 10/89 Reg. No. 3325S

Employer: MDOH

Office of Clerk and Recorder, County of Lincoln. This "corner record" was filed for record on March 28, 1990 was noted on the cross-index plat and is assigned page No. 4234, in book No. _____

Grant H. Sigelby
County Official



Cross Index No. R-7 T. 31N R. 33W P.M.M.

• - corner this sheet