

INSTRUCTIONS

1. Original and/or subsequent record used to evaluate the corner position.
2. Description of evidence found, note discrepancies in the record, state method of establishing lost or obliterated corners.
3. Description of monument and accessories set to perpetuate the corner position.
4. Sketch of corner, show all pertinent data which can best be shown in a sketch example, corner marking, topography ties, position of accessories, etc.
5. Certification must be signed and sealed by Land Surveyor registered in the State of Montana.
6. Fill in Cross Index & Section Diagram at bottom of sheet.

CERTIFIED CORNER RECORDATION

Corner 1/4 20/21 T. 31N R. 33W P.M.M. Lincoln County

Record 1893. Set a post 3 ft. long, 3 ins. square, 24 ins. in the ground for 1/4 sec. cor. marked 1/4 S. on W. face; from which:

- A pine, 20" diam., bears S 24 1/2°E 47 Lks. (31.0') dist. marked 1/4 S. B.T.
- A pine, 12" diam., bears N 45 1/4°W 24 Lks. (15.8') dist. marked 1/4 S. B.T.

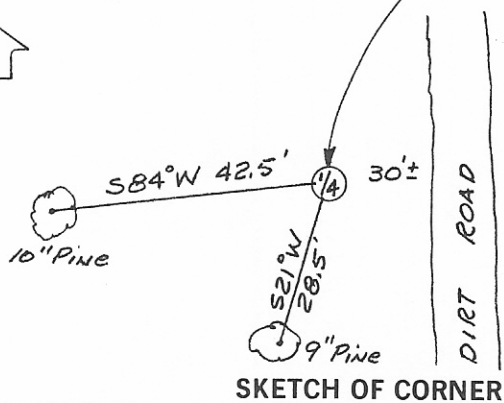
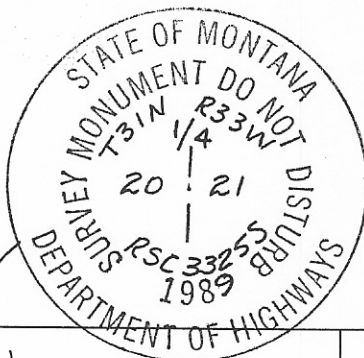
Found 1989. A stone 5"X9"X21", 6" above ground in mound of stone, marked with 1/4 on west face and (+) on top. (Note: This is the same stone reported by this surveyor on corner form filed in 1982.)

At the position of the found stone, set a 3 1/4"X30" aluminum monument, marked as per diagram below, 24" in the ground and bury found stone upside down along N.W. side; from which:

- A pine, 10" diam., bears S 84°W, 42.5 ft. marked RM with MARLS Yellow Tag.
- A pine, 9" diam., bears S 21°W, 28.5 ft. marked RM, with MARLS Yellow Tag.
- A metal fence post witness bears west 2 feet.

No evidence of original bearing trees which would match the position of the found stone could be found. Two decayed pine stumps in the vicinity of the corner did not match record bearing and distance. Although the area shows evidence of logging activity, evidence of the original bearing trees should have remained.

The found stone was accepted as the corner position because of its obvious use and acceptance, its professional marking and its position in relation to other corners in the section. See Certificate of Survey Number 1734 for measurements to other corners.



CERTIFICATION

I, Mark Roedel
certify the information shown herein is true and correct.

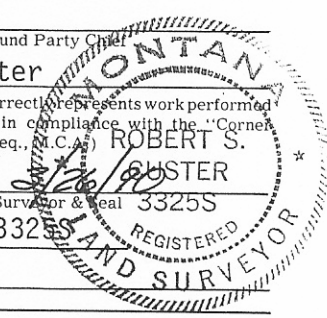
Signature Ground Party Chief

I, Robert S. Custer
certify that this Corner Record correctly represents work performed by me or under my direction in compliance with the "Corner Recordation Act" (10-29-101 et seq., M.C.A.)

Robert S. Custer
Signature of Surveyor & Seal 3325S

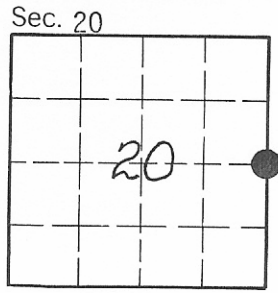
Date: 10/17/89 Reg. No. 3325S

Employer: MDOH



Office of Clerk and Recorder, County of Lincoln. This "corner record" was filed for record on March 28, 1990 was noted on the cross-index plat and is assigned page No. 4230, in book No. _____

Grant B.F. Siegel by Eric Buckhoff
County Official



Cross Index No. P-9 T. 31N R. 33W P.M.M.

• - corner this sheet