

INSTRUCTIONS

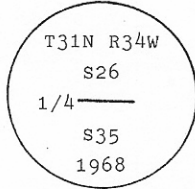
1. Original and/or subsequent record used to evaluate the corner position.
2. Description of evidence found, note discrepancies in the record, state method of establishing lost or obliterated corners.
3. Description of monument and accessories set to perpetuate the corner position.
4. Sketch of corner, show all pertinent data which can best be shown in a sketch example, corner marking, topography ties, position of accessories, etc.
5. Certification must be signed and sealed by Land Surveyor registered in the State of Montana.
6. Fill in Cross Index & Section Diagram at bottom of sheet.

CERTIFIED CORNER RECORDATION

Corner 1/4 Cor. of Secs. 26 & 35 T. 31 N., R. 34 W., P.M.M. Lincoln County

I. 1903 original G.L.O. record by Allen B. Benedict: Set a stone monument with two bearing trees.

1968 B.L.M. remonumentation record by Woodrow E. Damm et al: "The 1/4 sec. cor. of secs. 26 and 35, monumented with an iron stone, 14x10x5 ins., firmly set, mkd. 1/4 on the N. face, and witnessed by the original SW. bearing tree. At the corner point, set an iron post, 30 ins. long, 2 1/2 ins. diam., 24 ins. in the ground, with brass cap mkd.



from which

The original bearing tree:

A balsam, 26 ins. diam., bears S50 1/2° W, 21 lks. dist., mkd. 1/4 S35. (Record)

The new bearing trees:

A cedar, 10 ins. diam., bears N45° E, 46 lks. dist., mkd. 1/4 S26 BT.

A cedar, 8 ins. diam., bears S4 1/2° E, 47 lks. dist., mkd. 1/4 S35 BT.

Bury the original stone alongside the iron post.

II. Found a 2 1/2 ins. diam. iron pipe, 7 ins. out of the ground, with B.L.M. brass cap mkd. as shown above, from which

A cedar, 15 ins. diam., bears N45° E, 30.36 ft. (46 lks.) dist., mkd. "1/4 S26 BT". (B.L.M. rcd.)

A cedar, 12 ins. diam., bears S4 1/2° E, 31.02 ft. (47 lks.) dist., mkd. "1/4 S35 BT".

(B.L.M. rcd.)

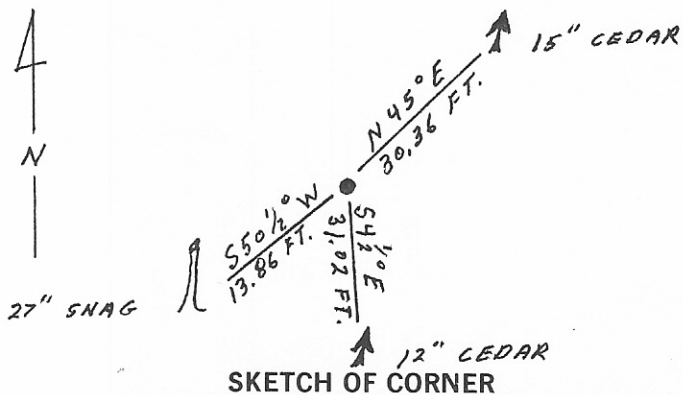
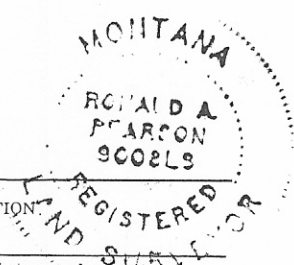
A grand fir snag, 27 ins. diam., bears S50 1/2° W, 13.86 ft. (21 lks.) dist., mkd. "1/4 S 5".

(G.L.O. rcd.)

III. Set a guard post with "Survey Marker" decal attached, 3 ft., W.

Painted a red band around each bearing tree and attached "Land Survey Monument" & "Bearing Tree" signs where needed.

Magnetic Declination: East, 20°



SKETCH OF CORNER

CERTIFICATION

I, Tom Hommel certify the information shown herein is true and correct.

Signature Ground Party Chief

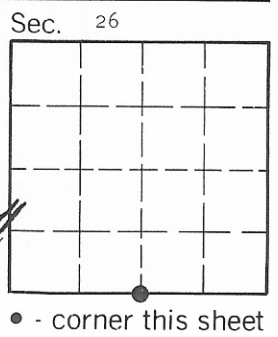
I, Ronald A. Pearson certify that this Corner Record correctly represents work performed by me or under my direction in compliance with the "Corner Recordation Act" (70-22-101 et seq., M.C.A.)

Ronald A. Pearson
Signature of Surveyor & Seal

Date: 11/6/91 Reg. No. 9008 LS
Employer: U.S. FOREST SERVICE

Office of Clerk and Recorder, County of Lincoln. This "corner record" was filed for record on Dec 2, 1991 was noted on the cross-index plat and is assigned page No. 4594, in book No. _____

Carol M. Cummings by Debi Ruchoff
County Official



Cross Index No. V19 T. 31 N. R. 34 W. PMM

• - corner this sheet