

**INSTRUCTIONS**

1. Original and/or subsequent record used to evaluate the corner position.
2. Description of evidence found, note discrepancies in the record, state method of establishing lost or obliterated corners.
3. Description of monument and accessories set to perpetuate the corner position.
4. Sketch or corner, show all pertinent data which can best be shown in a sketch example, corner marking, topography ties, position of accessories, etc.
5. Certification must be signed and sealed by Registered Land Surveyor in State of Montana.
6. Fill in Cross Index & Section Diagram at bottom of sheet.

**CERTIFIED CORNER RECORDATION**

Corner Perpetuation  $\frac{1}{4}$  S35 S2 32N T. 31N R. 34W P.M.M. Lincoln County

I. 1967 B.L.M. record: Set a 2½" iron pipe, 24" in the ground with brass cap marked as shown. Buried the original stone alongside iron pipe:

From which:

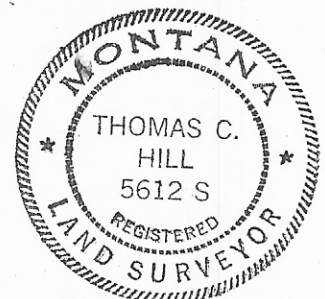
An 8" cedar bears N36-30-00E, 24 links (15.8 feet), marked S35 B.T.  
 A 20" larch bears S07W, 24 links (15.8 feet), marked S2 B.T.

II. Found: A 2½" B.L.M. brass cap marked as shown:

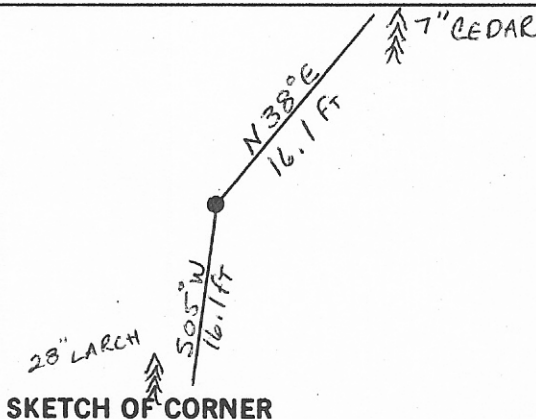
From which:

A 28" larch bears S05W, 16.1 feet, healed face.  
 A 7" cedar bears N38E, 16.1 feet, scribing visible.

III. Painted red bands around trees,



T32N R34W  
 $\frac{1}{4}$  S35 S2  
 T31N  
 1967  
 B.L.M.



**CERTIFICATION**

I. Key in A. Todd  
 certify the information shown herein is true and correct.

Kevin A Todd  
 Signature Ground Party Chief

I. Thomas C. Hill  
 certify that this Corner Record correctly represents work performed by me or under by direction in compliance with the "Corner Recordation Act" (30-22-101, et seq., M.D.A.)

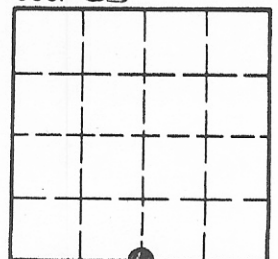
Thomas C Hill  
 Signature of Surveyor & Seal

Date: 12-3-82 Reg. No. 5612S

Employer: U.S.F.S.

Office of Clerk and Recorder, County of LINCOLN. This "corner record" was filed for record on the Dec-3 day of 1982 was noted on the cross-index plat and is assigned page No. 2090, in book No. \_\_\_\_\_ Eleanor L. Vaughn by Betty L. Conces County Official deputy

Sec. 35



Cross Index No. Z-19 T. T32N R. 34W PMM

• - corner this sheet