

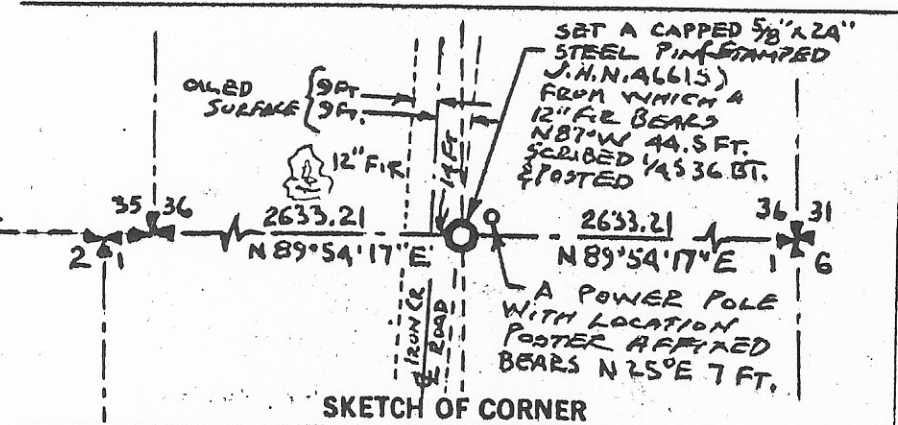
INSTRUCTIONS

1. Original and/or subsequent record used to evaluate the corner position.
2. Description of evidence found, note discrepancies in the record, state method of establishing lost or obliterated corners.
3. Description of monument and accessories set to perpetuate the corner position.
4. Sketch or corner, show all pertinent data which can best be shown in a sketch example, corner marking, topography ties, position of accessories, etc.
5. Certification must be signed and sealed by Registered Land Surveyor in State of Montana.
6. Fill in Cross Index & Section Diagram at bottom of sheet.

CERTIFIED CORNER RECORDATION

Corner South 1/4 Corner Sec. 36 T. 31 N R. 34 W P.M.M. Lincoln County

1. Record: 39.76 Lime stone, 6" X 12" X 15" above ground properly marked from which a Cedar, 6" in dia. bears S 21° W 78 Lks Dist. Mkd. 1/4 S B.T. A Tamarack, 10" in Dia. bears N 32 1/2° W 81 Lks Dist. Mkd. 1/4 S 36 B.T. This Cor. will hereafter refer to Sec. 36 only. This half mile bears N 89° 53' E.
2. Found: No evidence of original Cor.
3. Set: 5/8" X 24" capped steel pin (stamped J.H.N. 4661S) from which a 12" fir bears N 87° W 44.5 ft. scribed 1/4 S 36 B.T. & posted. A power pole with a location poster affixed bears N 25° E 7 ft.



CERTIFICATION

I, Jack H. Ninneman certify the information shown herein is true and correct.

Jack H. Ninneman
Signature Ground Party Chief

I, Jack H. Ninneman certify that this Corner Record correctly represents work performed by me or under my direction in compliance with the "Corner Recordation Act" (70-22-101, et seq., M.D.A.)

Jack H. Ninneman
Signature of Surveyor & Seal

Date: 7/8/81 Reg. No. 4661S

Employer: Ninneman Engineering Inc.

Office of Clerk and Recorder, County of Lincoln. This "corner record" was filed for record on the 14th of July day of 1981 was noted on the cross-index plat and is assigned page No. 1082 in book No. 1

Glenn L. Vaughn by Betty Bell
County Official Deputy

(T30R34) A-23 7-72 21 21

Sec.
