

CERTIFIED LAND CORNER RECORDATION

SECTION 19 TWP. 31 N., R. 33 W., M.P.M.

DESCRIPTION OF CORNER EVIDENCE FOUND, AND ORIGINAL RECORD (IF KNOWN)

NW Corner found B.C. by B.L.M.
N 1/4 Corner found Pin by Others
W 1/4 Corner found B.C. by B.L.M.
E 1/4 Corner found B.C. by B.L.M.
SW Corner found B.C. by B.L.M.
SE Corner found B.C. by B.L.M. 4 B.T.s

DESCRIPTION OF MONUMENT AND ACCESSORIES ESTABLISHED TO PERPETUATE THE ORIGINAL LOCATION OF THIS CORNER:

Date of work: April 1976

SEE REVERSE SIDE

SKETCH, WITH COURSE AND DISTANCE TO ADJACENT CORNERS IF DETERMINED IN THIS SURVEY. (MAY SKETCH OR PASTE REPRODUCTION ON REVERSE SIDE.)

SEE REVERSE SIDE

Surveyor's Seal

I, Jack H. Ninneman certify that the information shown herein is true and correct.

Signature of Jack H. Ninneman
Signature of Ground Party Chief

DIAGRAM OF CORNER:

N. See reverse Side

I, Jack W. Ninneman certify that I have carefully performed or reviewed the work done on the diagrammed corner as reported on this recordation form and approve the same.

Signature of Jack W. Ninneman
Signature of Surveyor

= Corner recorded on the sheet

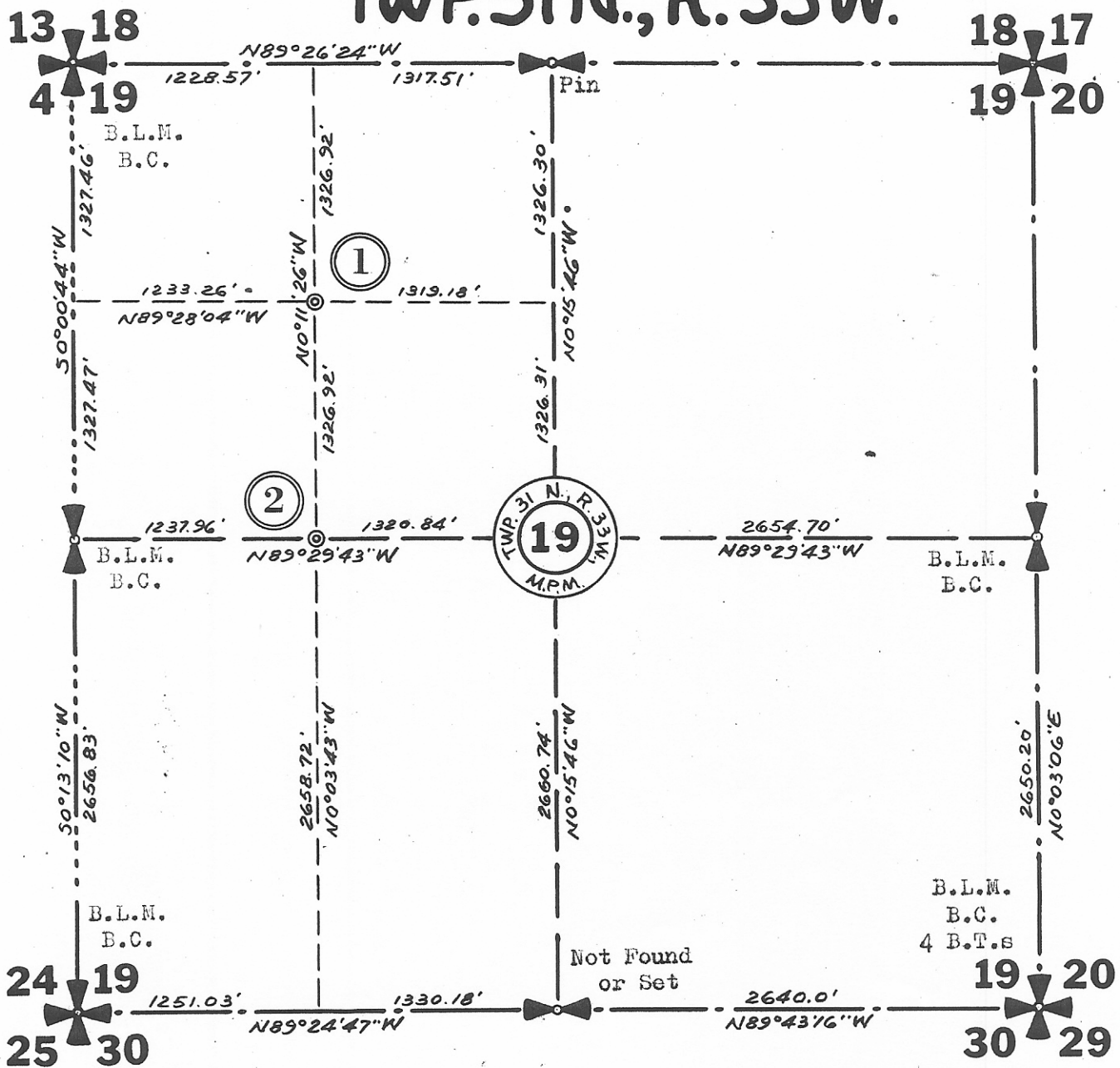
534 E.S.
Registration Number

Office of Clerk and Recorder, County of Lincoln

This "corner record" was filed for record on the 9th day of June 1976, was noted on the cross-index plat and is assigned page No. 479, in book No. 1

Eleanor Z. Vaughn, County Official
Doris, deputy

# TWP. 31 N., R. 33 W.



(1) Set  $\frac{1}{2}$ " x 24" Steel Rod with  
Cap Stamped: J.N. 534 E.S.

8" Fir bears S  $81^{\circ}22'$  E 7.3 Ft.  
8" Fir bears S  $58^{\circ}50'$  W 8.2 Ft.  
Both Trees Scribed NW  $\frac{1}{16}$  S19 BT & Posted.

(2) Set  $\frac{1}{2}$ " x 24" Steel Rod with  
Cap Stamped: J.N. 534 E.S.

14" Pine bears S  $42^{\circ}30'$  E 14.2 Ft.  
Scribed CW  $\frac{1}{16}$  S19 BT & Posted.  
8" Fir bears N  $40^{\circ}$  W 18.6 Ft.  
Scribed CW  $\frac{1}{16}$  S19 BT & Posted.  
Location Poster on 3" Fir South 9.0 Ft.