

**INSTRUCTIONS**

1. Original and/or subsequent record used to evaluate the corner position.
2. Description of evidence found, note discrepancies in the record, state method of establishing lost or obliterated corners.
3. Description of monument and accessories set to perpetuate the corner position.
4. Sketch of corner, show all pertinent data which can best be shown in a sketch example, corner marking, topography ties, position of accessories, etc.
5. Certification must be signed and sealed by Land Surveyor registered in the State of Montana.
6. Fill in Cross Index & Section Diagram at bottom of sheet.

**CERTIFIED CORNER RECORDATION**

Sections 13 & 24  
 Sections 18 & 19  
 Corner \_\_\_\_\_ T. 32 North R. 6 East P.M.M. Liberty County

Record 1896 G.L.O. Survey (Joseph H. Heyer)

Set a granite stone, 15x8x7 inches, 10 inches in the ground, for Corner of Sections 13, 18, 19 and 24, marked with three notches on the North and South edges, dig pits, 18x18x12 inches in each Section, 5½ ft. distance; and raise a mound of earth, 4 ft. base, 2 ft. high, West of Corner.

Found 1990

Found a railroad spike, origin unknown; position of spike fits adjacent corners well and is accepted as the Corner position.

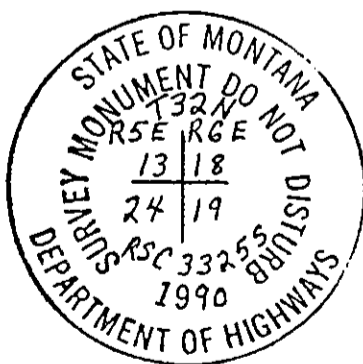
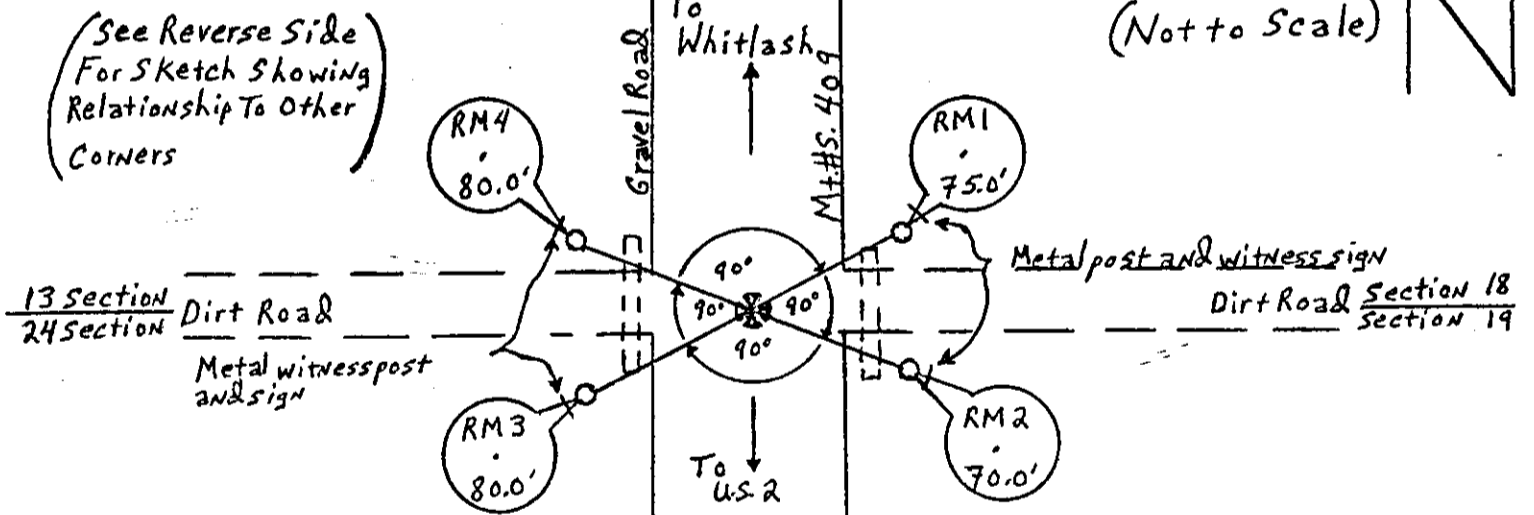
In place of railroad spike, set 3¼ inch x 30 inch aluminum monument 36 inches in the ground, placed found railroad spike with 5/8 inch x 24 inch rebar inside post, marked as per diagram below. From which:

A 5/8 inch x 24 inch rebar with 2 inch aluminum cap, marked as per diagram, bears North 45° East a distance of 75.0 feet.

A 5/8 inch x 24 inch rebar with 2 inch aluminum cap, marked as per diagram, bears South 45° East a distance of 70.0 feet.

A 5/8 inch x 24 inch rebar with 2 inch aluminum cap, marked as per diagram, bears South 45° West a distance of 80.0 feet.

A 5/8 inch x 24 inch rebar with 2 inch aluminum cap, marked as per diagram, bears North 45° West a distance of 80.0 feet.



SKETCH OF CORNER

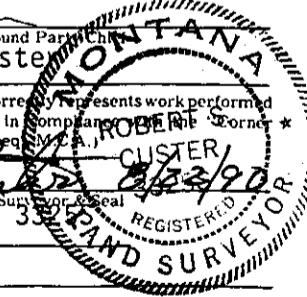
CERTIFICATION  
 Bryce Larsen

I, \_\_\_\_\_  
 certify the information shown herein is true and correct.

*Bryce Larsen*  
 Signature Ground Party  
 Robert S. Custe

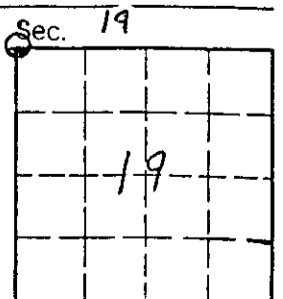
I, \_\_\_\_\_  
 certify that this Corner Record correctly represents work performed by me or under my direction in compliance with the Montana Corner Recordation Act" (70-22101, et seq.) M.C.A.

*Robert S. Custe*  
 Signature of Surveyor  
 Date: 8-16-90 Reg. No. 33255  
 Employer: MDOH

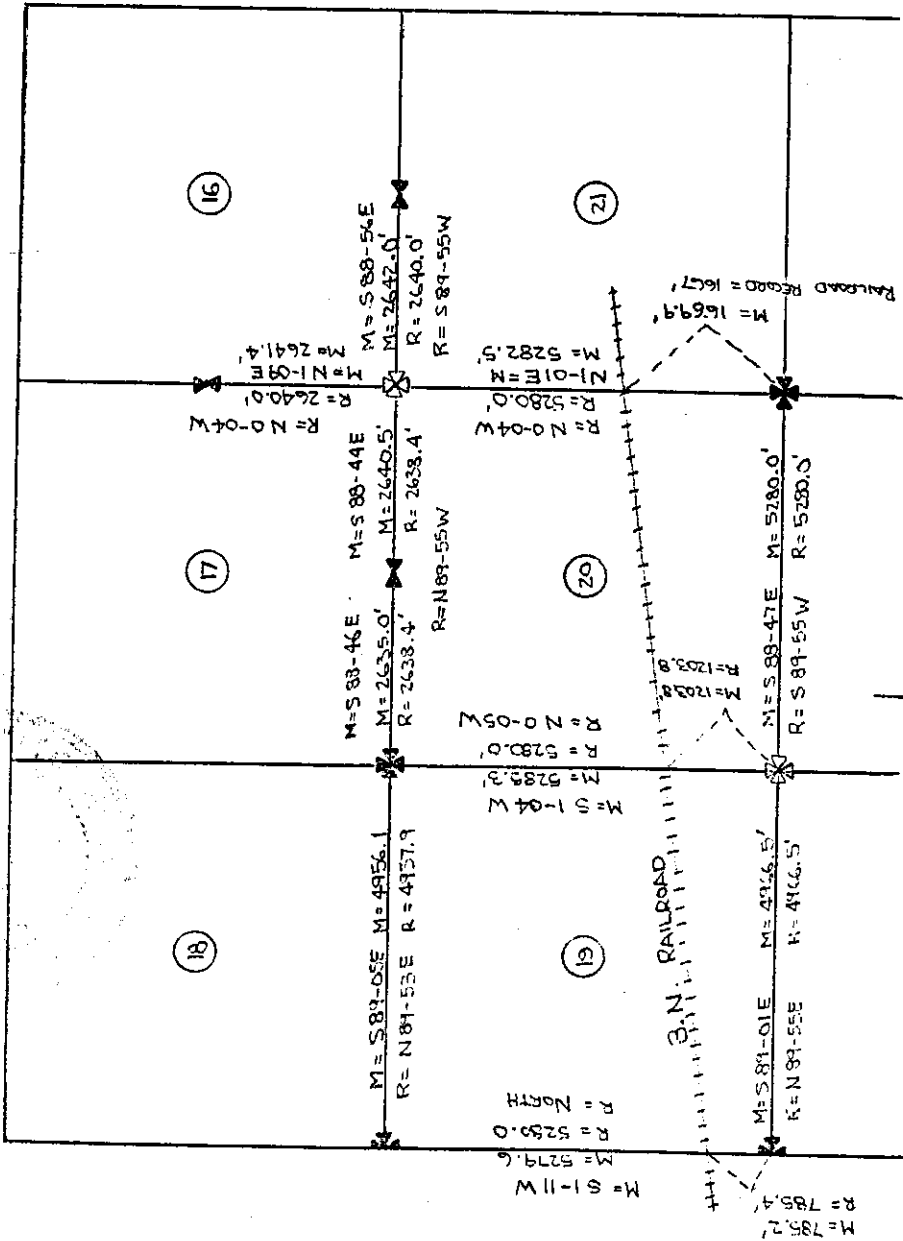


Office of Clerk and Recorder, County of Liberty. This "corner record" was filed for record on August 23, 1990 was noted on the cross-index plat and is assigned page No. \_\_\_\_\_, in book No. \_\_\_\_\_

Cross Index No. N-1 T. 32 N. R. 6 E: P.M.M.



• - corner this sheet



BASIS OF BEARING: STATE PLANE AZIMUTH FROM STATION LOTHAR TO EAGLE  $97^{\circ}52'23''$ ; NAD-83  $\phi$  ANGLE AT LOTHAR IS  $-1^{\circ}16'36''$ .

HORIZONTAL DATUM: ASSUMED COORDINATE SYSTEM (NOT ON NAD-83 DATUM)

$\otimes$  = RE-ESTABLISHED MONUMENT NO SCALE  
 $\otimes$  = FOUND MONUMENT  
 (REFER TO CORNER RECORDS! FOR SIZE AND TYPE OF FOUND MONUMENT)

R 61 N  
R 61 W

INSTRUCTIONS

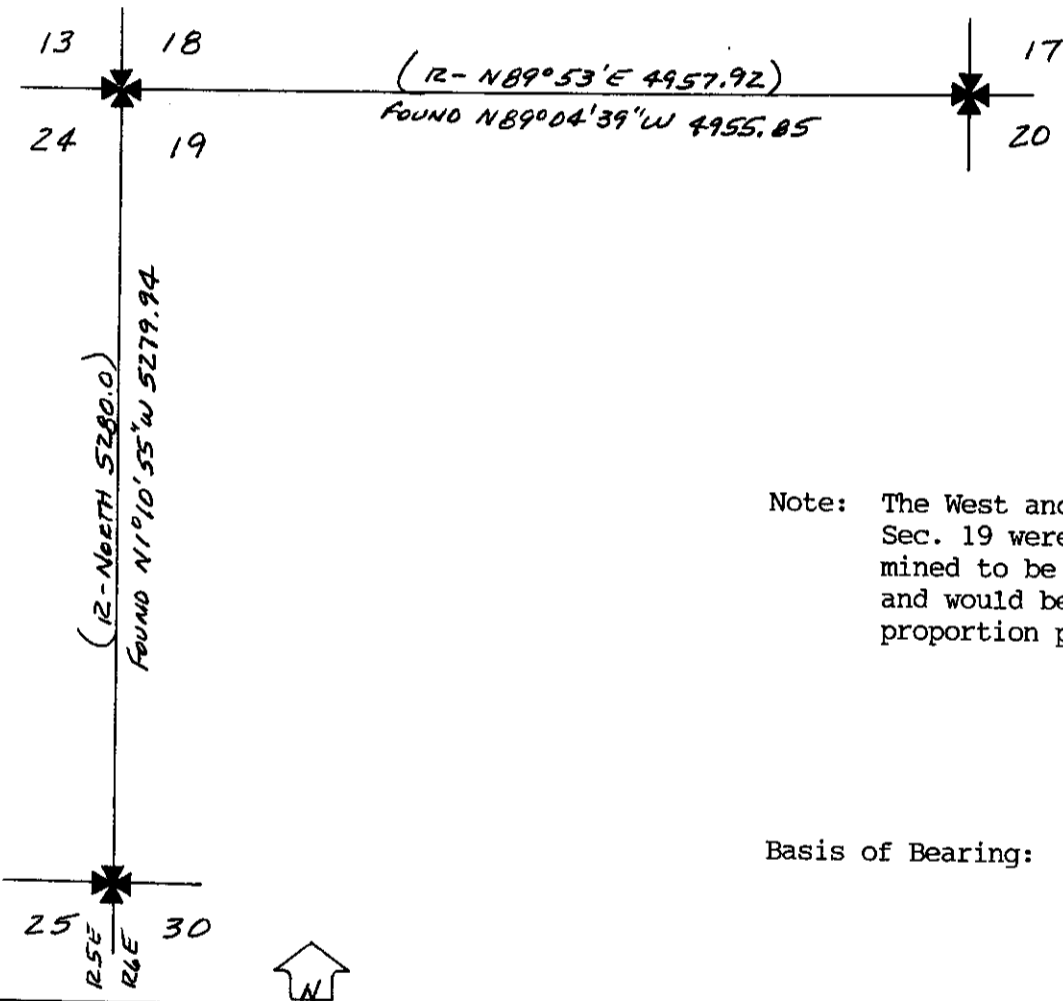
1. Original and/or subsequent record used to evaluate the corner position.
2. Description of evidence found, note discrepancies in the record, state method of establishing lost or obliterated corners.
3. Description of monument and accessories set to perpetuate the corner position.
4. Sketch of corner, show all pertinent data which can best be shown in a sketch example, corner marking, topography ties, position of accessories, etc.
5. Certification must be signed and sealed by Land Surveyor registered in the State of Montana.
6. Fill in Cross Index & Section Diagram at bottom of sheet.

CERTIFIED CORNER RECORDATION

Corner NW Cor. Sec. 19 T. 32N R. 6E P.M.M. Liberty County

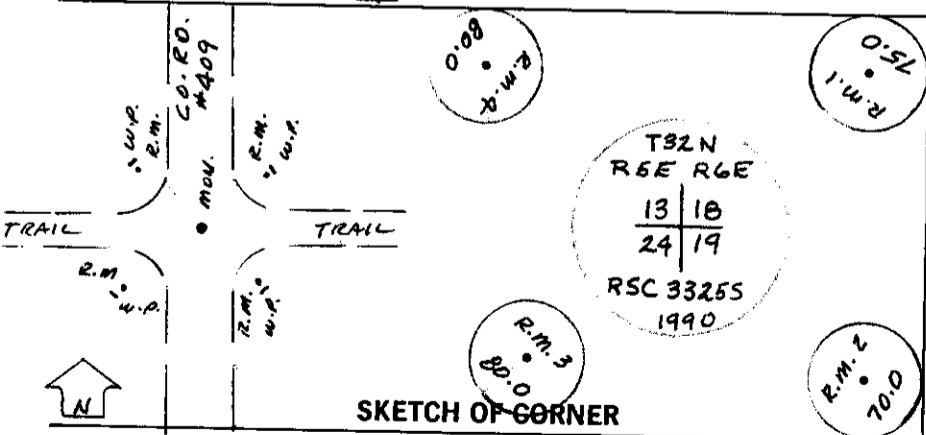
Record: 1897 GLO Survey - Set a granite stone, 15x8x7 ins., 10 ins. in the ground for Cor. of Secs. 13, 18, 19 and 24, marked with 3 notches on N. and S. edges, dig pits, 18x18x12 ins. in each Sec. 5 1/2 ft. dist. and raise a mound of earth, 4 ft. base, 2 ft. high, W. of Cor.

Found: 3 1/2" x 30" Aluminum, State of Montana monument, marked as shown, 36" deep in center of Secondary 409. State of Montana, 2" aluminum cap, marked as shown, 75.0 ft. NE, 80.0 ft. NW, 80.0 ft. SW and 70.0 ft. SE. Witness post with Survey Marker stickon by R.M. caps.



Note: The West and North 1/4 Corner for Sec. 19 were searched and determined to be lost or obliterated and would be reset at a single proportion position.

Basis of Bearing: Highway Project F1-5(2) 308 Lothair-Chester



CERTIFICATION

I, Harry C. Strong certify the information shown herein is true and correct.

*Harry C. Strong*  
Signature Ground Party Chief

I, Harry C. Strong certify that this Corner Record correctly represents work performed by me or under my direction in compliance with the "Corner Recordation Act" (70-22-101, et seq., M.C.A.)

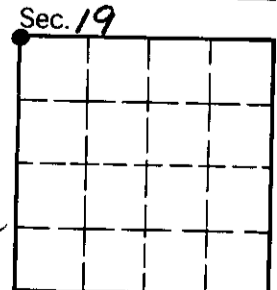
*Harry C. Strong*  
Signature of Surveyor & Seal

Date: 12-10-90 Reg. No. 3103S

Employer: Professional Services Contract with the MDOH

Office of Clerk and Recorder, County of Liberty. This "corner record" was filed for record on June 24, 1991 was noted on the cross-index plat and is assigned page No. \_\_\_\_\_, in book No. \_\_\_\_\_

*Maurice Cicco, Deputy*  
County Official



Cross Index No. N1 T. 32N R. 6E P.M.M.

• - corner this sheet