

**INSTRUCTIONS**

1. Original and/or subsequent record used to evaluate the corner position.
2. Description of evidence found, note discrepancies in the record, state method of establishing lost or obliterated corners.
3. Description of monument and accessories set to perpetuate the corner position.
4. Sketch of corner, show all pertinent data which can best be shown in a sketch example, corner marking, topography ties, position of accessories, etc.
5. Certification must be signed and sealed by Land Surveyor registered in the State of Montana.
6. Fill in Cross Index & Section Diagram at bottom of sheet.

**CERTIFIED CORNER RECORDATION**

Corner SECS. 20, 21, 28 & 29      T. 32N., R. 6E., P.M.M.      LIBERTY County

RECORD GLO 1897

Set a granite stone 14"x8"x8", 10" in the ground, for cor. of Sections 20, 21, 28 and 29, marked with two notches on South and four notches on East edges. Dig pits 18"x18"x12" in each section 5-1/2' dist.; and raise a mound of earth, 4' base, 2' high, West of corner.

RECORD MDT 1990

Found 3 1/2" aluminum cap as described on corner recordation filed with the Office of the Clerk and Recorder of Liberty County by Sterling Wardell dated 7-15-85. Aluminum cap 4" below road surface. Set P.K. nail straddlers at surface.

FOUND MDT 2001

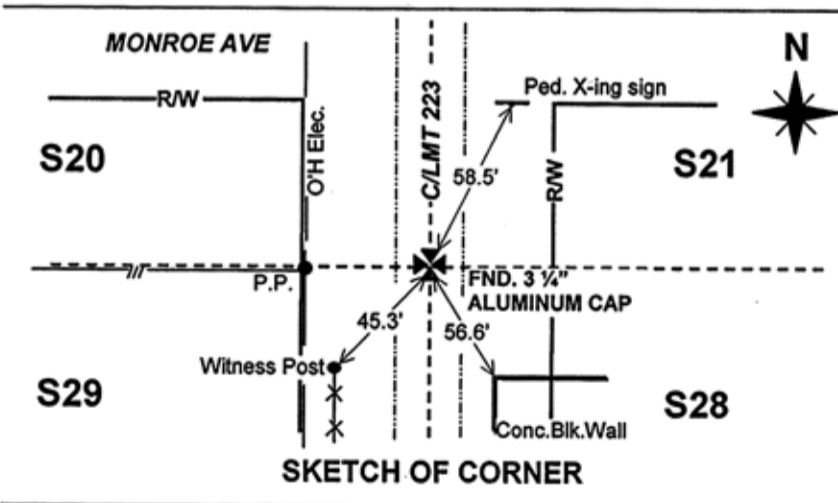
Found a 3 1/4" aluminum monument, marked as shown below. Monument is buried 4" beneath the roads' surface along C/L of MT 223(Fifth St.) and just South of Monroe Avenue.



SET MDT 2001

Set a witness post with MDT decal 45.3' Southwest of found monument.

See Certificate of Survey Number 120350



**CERTIFICATION**

I, Timothy A. Ferguson  
certify the information shown herein is true and correct.

*[Signature]*  
Signature of Ground Party Chief

I, Theodore M. Brown  
certify that this Corner Record correctly represents work performed by me or under my direction in compliance with the "Corner Recordation Act" (70-22-102 et seq., MCA)

*[Signature]*  
Signature of Surveyor & Seal

Date: 12/11/02 Reg. No. 11702LS

Employer: Montana Department of Transportation

Office of Clerk and Recorder, County of LIBERTY. This "corner record" was filed for record on December 11, 2002 @ 12:30 PM, was noted on the cross-index plat, and is assigned Page No. \_\_\_\_\_, in Book No. \_\_\_\_\_.

*[Signature]*  
County Official

Sec. 20


• — Corner this sheet

Cross Index No. R-9 T. 32N., R. 6E., PMM