

INSTRUCTIONS

1. Original and/or subsequent record used to evaluate the corner position.
2. Description of evidence found, note discrepancies in the record, state method of establishing lost or obliterated corners.
3. Description of monument and accessories set to perpetuate the corner position.
4. Sketch of corner, show all pertinent data which can best be shown in a sketch example, corner marking, topography ties, position of accessories, etc.
5. Certification must be signed and sealed by Land Surveyor registered in the State of Montana.
6. Fill in Cross Index & Section Diagram at bottom of sheet.

CERTIFIED CORNER RECORDATION

Corner SECS 16, 17, 20 & 21 T. 32N., R. 6E., P.M.M. LIBERTY County

RECORD GLO Set a granite stone, 18"x12"x10", 12" in the ground, for cor. of Sec's.16, 17, 20 and 21, marked with
1897 three notches on South and four notches on East edges. Dig pits, 18"x18"x12" in each section 5-
1/2' dist. And raise a mound of earth, 4' base, 2' high, West of corner.

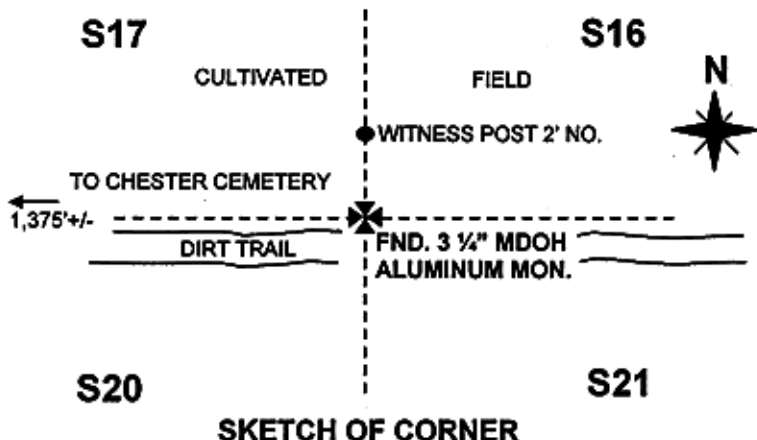
RECORD MDT No evidence of the original monument was recovered. Corner position located by double
1990 proportionate measure, which falls in the center of an East-West field trail. At this position, set a 3
1/4"x30" aluminum monument 46" in the ground (16" bury). Placed a 5/8" x 24" rebar and a few
5/8"x8" rebar inside aluminum post. Reference monuments not practical.

FOUND MDT Found a 3 1/4" aluminum monument, marked as shown below. Monument is buried 16" beneath the
2001 ground in a cultivated field just North of an East-West dirt trail.



SET MDT Set a witness post with MDT decal 2' North of found monument.
2001

See Certificate of Survey Number 120350



CERTIFICATION

I, Timothy A. Ferrguson
certify the information shown herein is true and correct.

[Signature]
Signature of Ground Party Chief

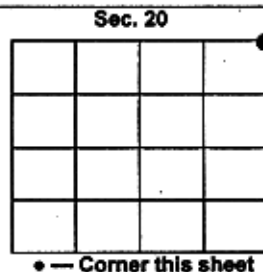
I, Theodore M. Brown
certify that this Corner Record correctly represents work performed by me or under my direction in compliance with the "Corner Recordation Act" (70-28-101, et seq., MCA).

[Signature]
Signature of Surveyor & Registered Surveyor

Date: 12/11/02 Reg. No. 11702LS
Employer: Montana Department of Transportation

Office of Clerk and Recorder, County of LIBERTY. This "corner record" was filed for record on
December 11, 2002 @ 12:30PM was noted on the cross-index
plat, and is assigned Page No. _____, in Book No. _____.

[Signature]
County Official



Cross Index No. N-9 T. 32N., R. 6E., PMM