

INSTRUCTIONS

1. Original and subsequent record used to evaluate the corner position.
2. Description of evidence found, note discrepancies in the record, state method of establishing lost or obliterated corners.
3. Description of monument and accessories set to perpetuate the corner position.
4. Sketch or corner, show all pertinent data which can best be shown in a sketch example, corner marking, topography ties, position of accessories, etc.
5. Certification must be signed and sealed by Registered Land Surveyor in State of Montana.
6. Fill in Cross Index & Section Diagram at bottom of sheet.

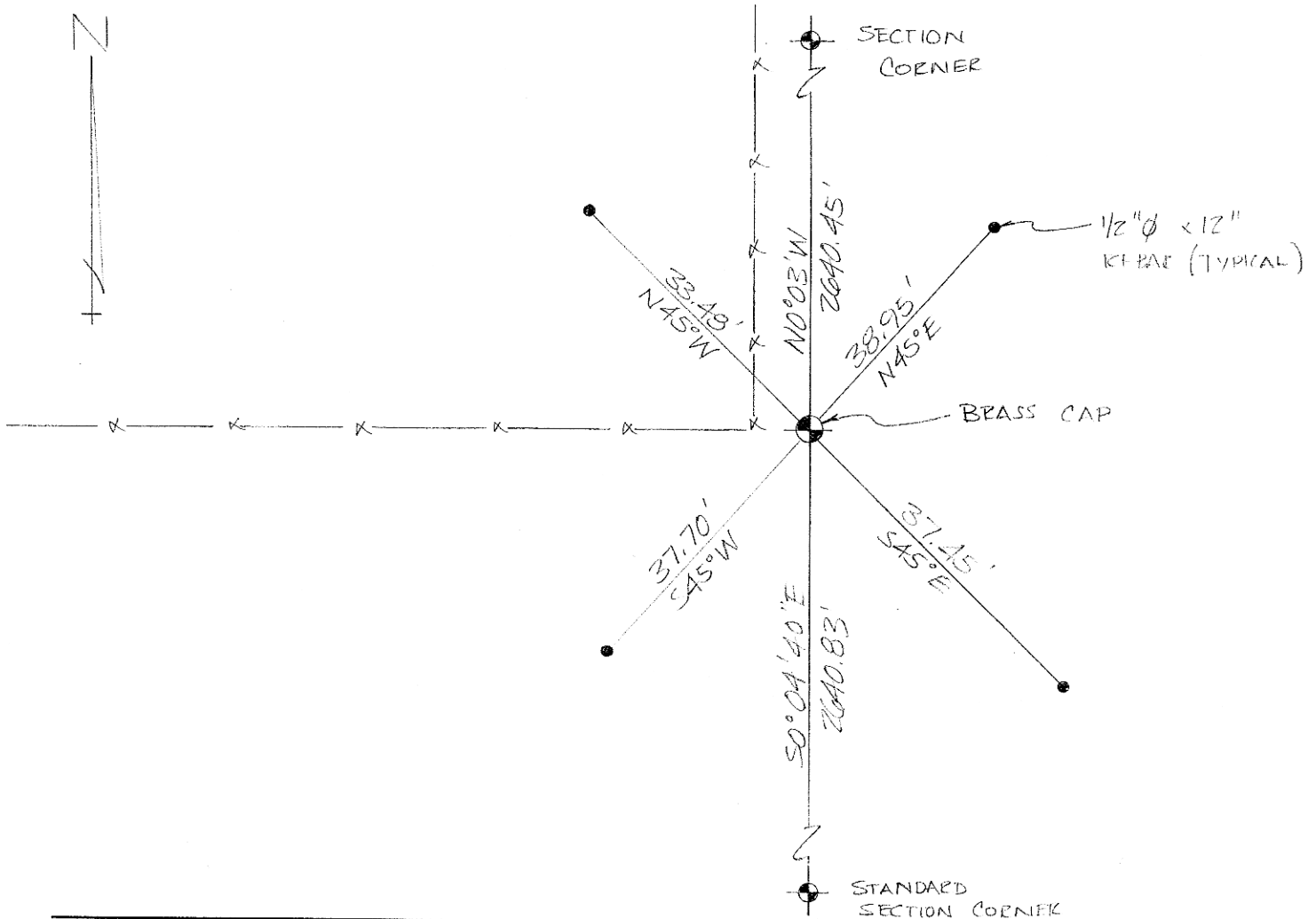
CERTIFIED CORNER RECORDATION

Corner Sec. 31 & 32 (1/4 Sec. Cor) T. 32N, R. 15E, P.M.M. Hill County

Iron post w/ brass cap set for corner w/ stone pile alongside, 1912.

Found GLO iron w/ brass cap at fence corner (N & W).

Accessories: Set 1/2"Ø x 12" rebar N45°E 38.95 feet.
 Set " " " " S45°E 37.45 feet.
 Set " " " " S45°W 37.70 feet.
 Set " " " " N45°W 33.48 feet.



CERTIFICATION

I, Dennis D. Findorff
 certify the information shown herein is true and correct.
Dennis D. Findorff
 Signature Ground Party Chief

I, Robert E. Findorff
 certify that this Corner Record correctly represents work performed
 by me or under my direction in compliance with the "Corner
 Recordation Act" (#0-26401, et seq., M.D.A.)
Robert E. Findorff
 Signature of Surveyor & Seal

Date 8/31/83 Reg. No. 3976ES

Employer Robert E. Findorff & Assoc.

SKETCH OF CORNER

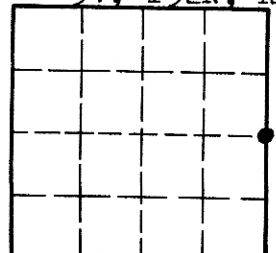
Office of Clerk and Recorder, County of HILL. This "corner
 record" was filed for record on the September 7th day of 19 83,
 was noted on the cross-index plat and is assigned page No. XXX, in
 book No. XXX

DIANE E. MELLEME
 County Official
Carolyn (Patrick)

✓ FEE: NONE

DEPUTY Cross Index No. T. R. P.M.M.

Sec. 31, T32N, R15E



468710

• - corner this sheet

X-5 32 15E