

INSTRUCTIONS

1. Original and/or subsequent record used to evaluate the corner position.
2. Description of evidence found, note discrepancies in the record, state method of establishing lost or obliterated corners.
3. Description of monument and accessories set to perpetuate the corner position.
4. Sketch or corner, show all pertinent data which can best be shown in a sketch example, corner marking, topography lies, position of accessories, etc.
5. Certification must be signed and sealed by Registered Land Surveyor in State of Montana.
6. Fill in Cross Index & Section Diagram at bottom of sheet.

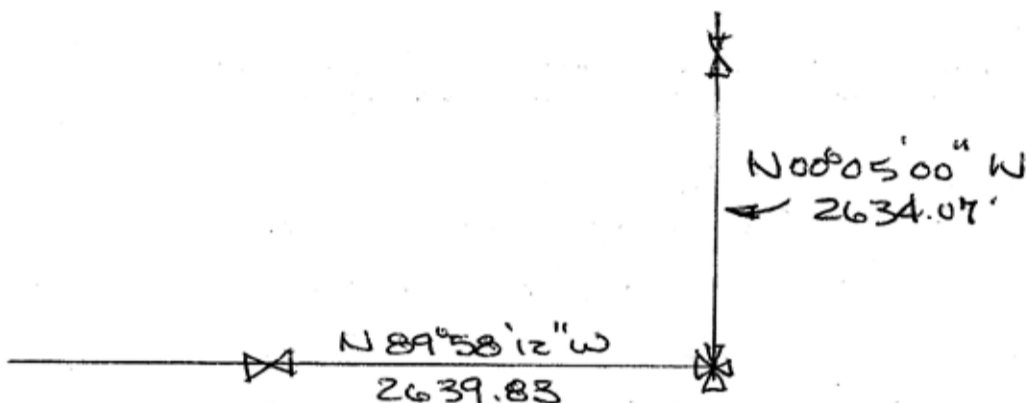
CERTIFIED CORNER RECORDATION

Sec Corner 7,8,17,18 T. 32N R. 15E P.M.M. Hill County

Found a 2 1/2" B.L.M. Brass cap. in centerline of a road.

Using this corner I survey both North and West.

To perpetuate I place a yellow tag on the corner post 30 ft. north of point.



Cultivated Field
SKETCH OF CORNER

CERTIFICATION

I, _____
certify the information shown herein is true and correct.

Signature Ground Party Chief
Donald V. Ring Jr

I, _____
certify that this Corner Record correctly represents work performed by me or under my direction in compliance with the "Corner Recordation Act" (70-22-101, et seq. M.D.A.)

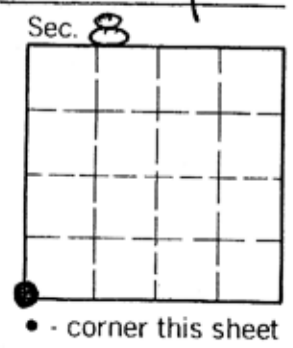
Signature of Surveyor & Seal
Donald V. Ring Jr

Date: 4/15/85 Reg. No. 5212-3

Employer: D&L Surveying Inc

Office of Clerk and Recorder, County of HILL. This "corner record" was filed for record on the MAY 9th day of 1985, was noted on the cross-index plat and is assigned page No. XX, in book No. XX

DIANE E. MELLEME
County Official
Diane E. Mellem
DEPUTY
Cross Index No. J-5 T. 32 R. 15E P.M.M.



FEE: NONE

474000