

CERTIFIED LAND CORNER RECORDATION

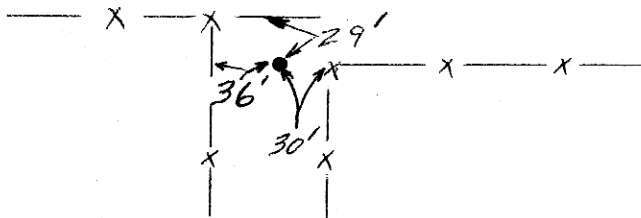
DESCRIPTION OF CORNER EVIDENCE FOUND, AND ORIGINAL RECORD (IF KNOWN)

A G.L.O. brass cap and post were found in position as described in the notes from the original survey.

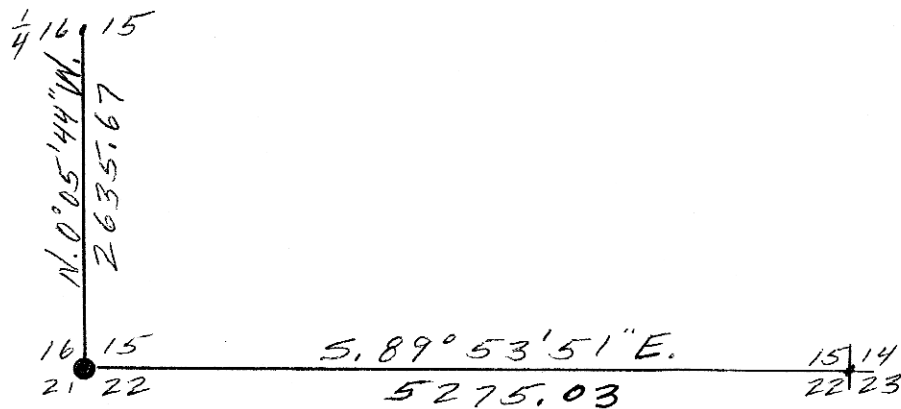
DESCRIPTION OF MONUMENT AND ACCESSORIES ESTABLISHED TO PERPETUATE THE ORIGINAL LOCATION OF THIS CORNER:

Date of work: 7/15/83

The G.L.O. brass cap was left in its original position as it was found.



SKETCH, WITH COURSE AND DISTANCE TO ADJACENT CORNERS IF DETERMINED IN THIS SURVEY. (MAY SKETCH OR PASTE REPRODUCTION ON REVERSE SIDE.)



Surveyor's Seal

I, D. Bruce Mortensen certify that the information shown herein is true and correct.

D. Bruce Mortensen

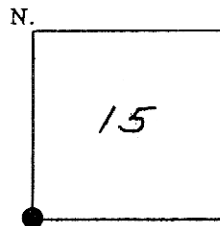
Signature of Ground Party Chief

I, D. Bruce Mortensen certify that I have carefully performed or reviewed the work done on the diagrammed corner as reported on this recordation form and approve the same.

D. Bruce Mortensen

Signature of Surveyor

DIAGRAM OF CORNER:



= Corner recorded on the sheet

Registration Number

469776

Office of Clerk and Recorder, County of Hill

This "corner record" was filed for record on the 19th day of December, 1983, was noted on the cross-index plat and is assigned page No. XXX, in book No. xxx time: 9:15 am *Diane E. Mellem* DEPUTY

Diane E. Mellem
DIANE E. MELLEME

County Official

FEE: \$NONE

Form 125-41328

Cross Index No. N-13 T. 32 N., R. 15 E., M. Mer.