

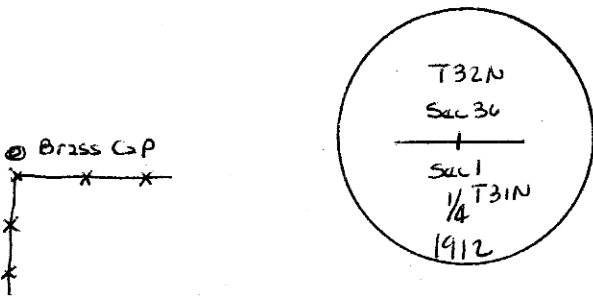
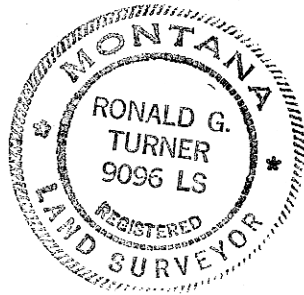
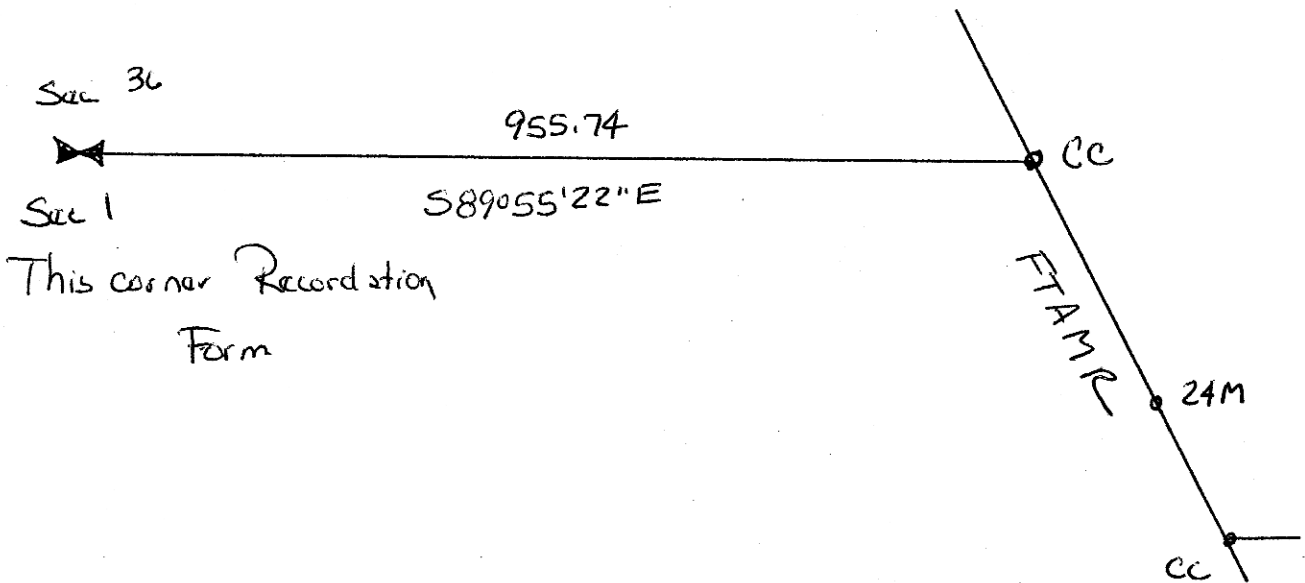
**INSTRUCTIONS**

1. Original and/or subsequent record used to evaluate the corner position.
2. Description of evidence found, note discrepancies in the record, state method of establishing lost or obliterated corners.
3. Description of monument and accessories set to perpetuate the corner position.
4. Sketch of corner, show all pertinent data which can best be shown in a sketch example, corner marking, topography ties, position of accessories, etc.
5. Certification must be signed and sealed by Land Surveyor registered in the State of Montana.
6. Fill in Cross Index & Section Diagram at bottom of sheet.

**CERTIFIED CORNER RECORDATION**

Corner ⊙ N 1/4 Sec. 1 T. 31N R. 15E P.M.M. Hill County

1994 - Found Brass Cap in Place



**SKETCH OF CORNER**

**CERTIFICATION**

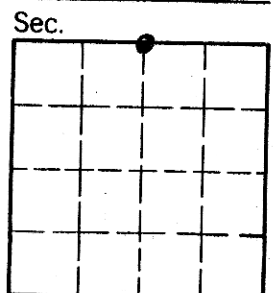
I, Ronald G Turner  
certify the information shown herein is true and correct.  
Ronald Turner  
Signature Ground Party Chief

I, Ronald G Turner  
certify that this Corner Record correctly represents work performed by me or under my direction in compliance with the "Corner Recordation Act" (70-22-101, et seq., M.C.A.)  
Ronald Turner  
Signature of Surveyor & Seal

Date: 8/5/94 Reg. No. 9096 LS

Employer: \_\_\_\_\_

Office of Clerk and Recorder, County of HILL. This "corner record" was filed for record on AUGUST 11th, 1994 at 2:15 PM was noted on the cross-index plat and is assigned page No. XX, in book No. XXX DIANE E. MELLEME County Official



• - corner this sheet

509215

Carolyn Patrick DEPUTY

FEE: NONE FILED

Cross Index No. 2-23 T. 32 R. 15 P.M.M.

**INSTRUCTIONS**

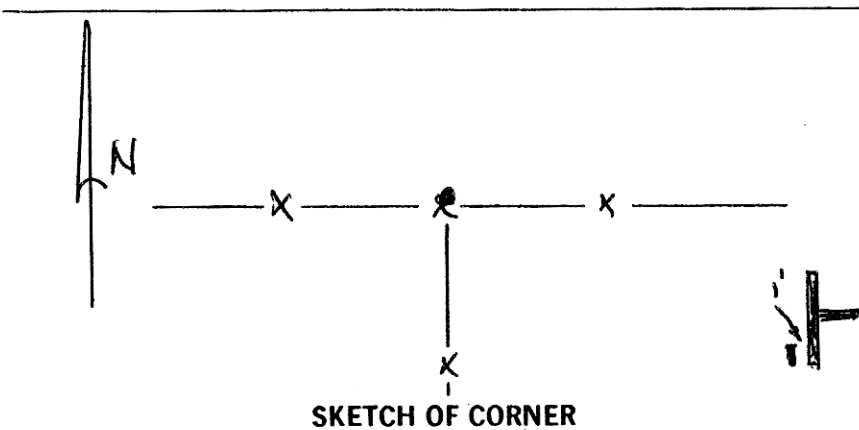
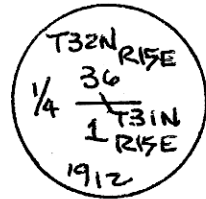
1. Original and/or subsequent record used to evaluate the corner position.
2. Description of evidence found, note discrepancies in the record, state method of establishing lost or obliterated corners.
3. Description of monument and accessories set to perpetuate the corner position.
4. Sketch of corner, show all pertinent data which can best be shown in a sketch example, corner marking, topography ties, position of accessories, etc.
5. Certification must be signed and sealed by Registered Land Surveyor in State of Montana.
6. Fill in Cross Index & Section Diagram at bottom of sheet.

**CERTIFIED CORNER RECORDATION**

$\frac{1}{4}$  Corner 36 T. 32N R. 15E P.M.M. Hill County

1  
T31N R15E  
 No original notes used.

Found  $1\frac{1}{2}$ " brass cap 10" above ground, in good condition. Corner is in an E-W fence and at a corner with a south running fence.  
 No additional accessories established.



**CERTIFICATION**

I, \_\_\_\_\_  
 certify the information shown herein is true and correct.

Signature, Ground Party Chief  
Donald V. King Jr.

I, \_\_\_\_\_  
 certify that this Corner Record correctly represents work performed by me or under my direction in compliance with the "Corner Recordation Act" (70-22-101, M.S.A.)

Signature of Surveyor & Seal  
Donald V. King Jr.

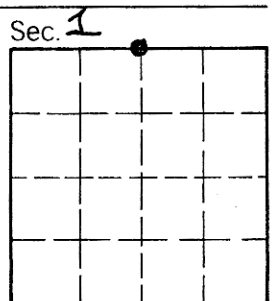
Date: 5/15/86 Reg. No. 5212 S  
 Employer: Self

Office of Clerk and Recorder, County of HILL. This "corner record" was filed for record on the May 16th, 1986 @ 4:05 P.M. day of 1986, was noted on the cross-index plat and is assigned page No. \_\_\_\_\_, in book No. \_\_\_\_\_

DIANE E. MELLEM, CLERK & RECORDER  
 County Official ✓

Cowlyn Patrick  
 DEPUTY

Cross Index No. 2-23 T. 32 R. 15 P.M.M.



• - corner this sheet

479084