

CERTIFIED LAND CORNER RECORDATION

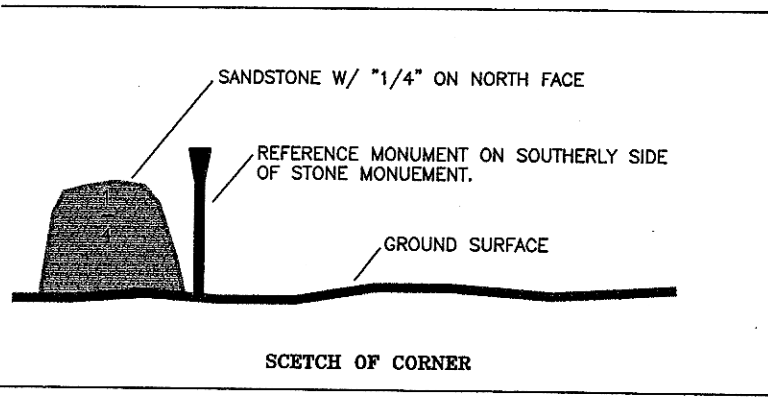
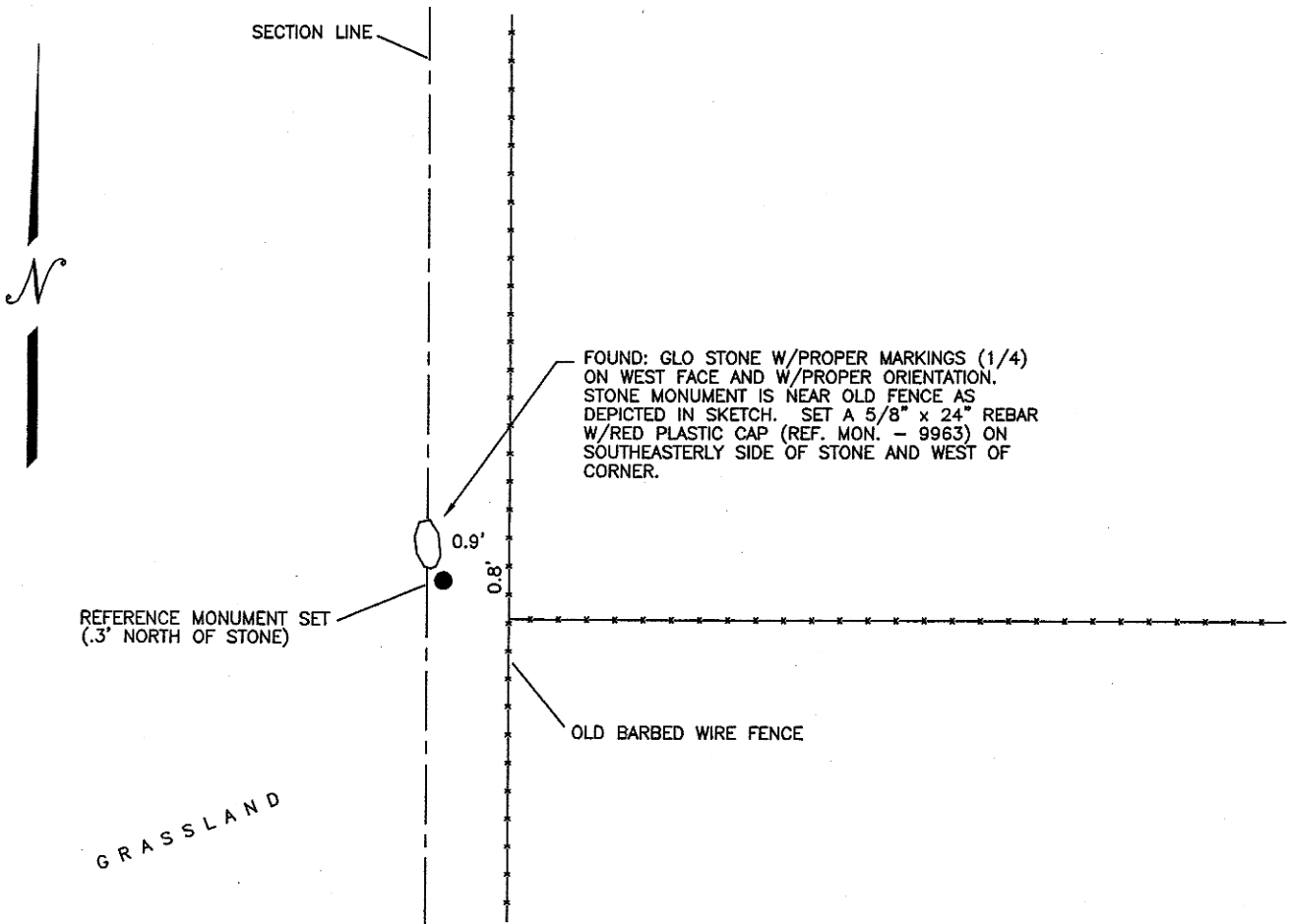
CORNER 1/4 COR. COMMON TO SECS. 15 & 16 T T 32 N R R 16 E COUNTY HILL

GLO RECORD:

40.00 chains
 Set a sandstone, 14 x 10 x 8 ins. 9 ins. in the ground, for 1-4 Sec. Cor. marked 1-4 on W face. dug pits 18 x 18 x 12 ins. N & S of stone, 5 1-2 ft. dist. and raised a mound of earth 1 1-2 ft. high, 3 1-2 ft. base alongside.

FOUND: GLO STONE W/MARKINGS ON WEST FACE (1/4) PROPERLY ORIENTED AND SET AS DESCRIBED.

SET: 5/8" x 24" REBAR W/PLASTIC CAP (REF.MON. 9963LS) ON SOUTHEASTERLY SIDE OF STONE MONUMENT.



CERTIFICATION

I, _____
 certify the information shown herein is true and correct.

Signature of Ground Party Chief _____

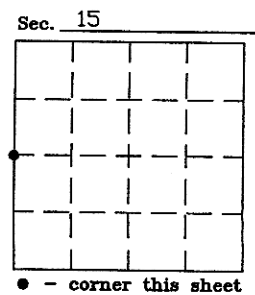
I, RUDY S. CICON
 certify that this Corner Recordation correctly represents work performed by me or under my direction in compliance with the "Corner Recordation Act" (70-22-101, et seq. M.C.A.)

Signature of Surveyor and Seal Rudy S. Cicon **REGISTERED LAND SURVEYOR**
 9963LS

Date 03-26-05 Reg. No. 9963LS
 Employer: _____

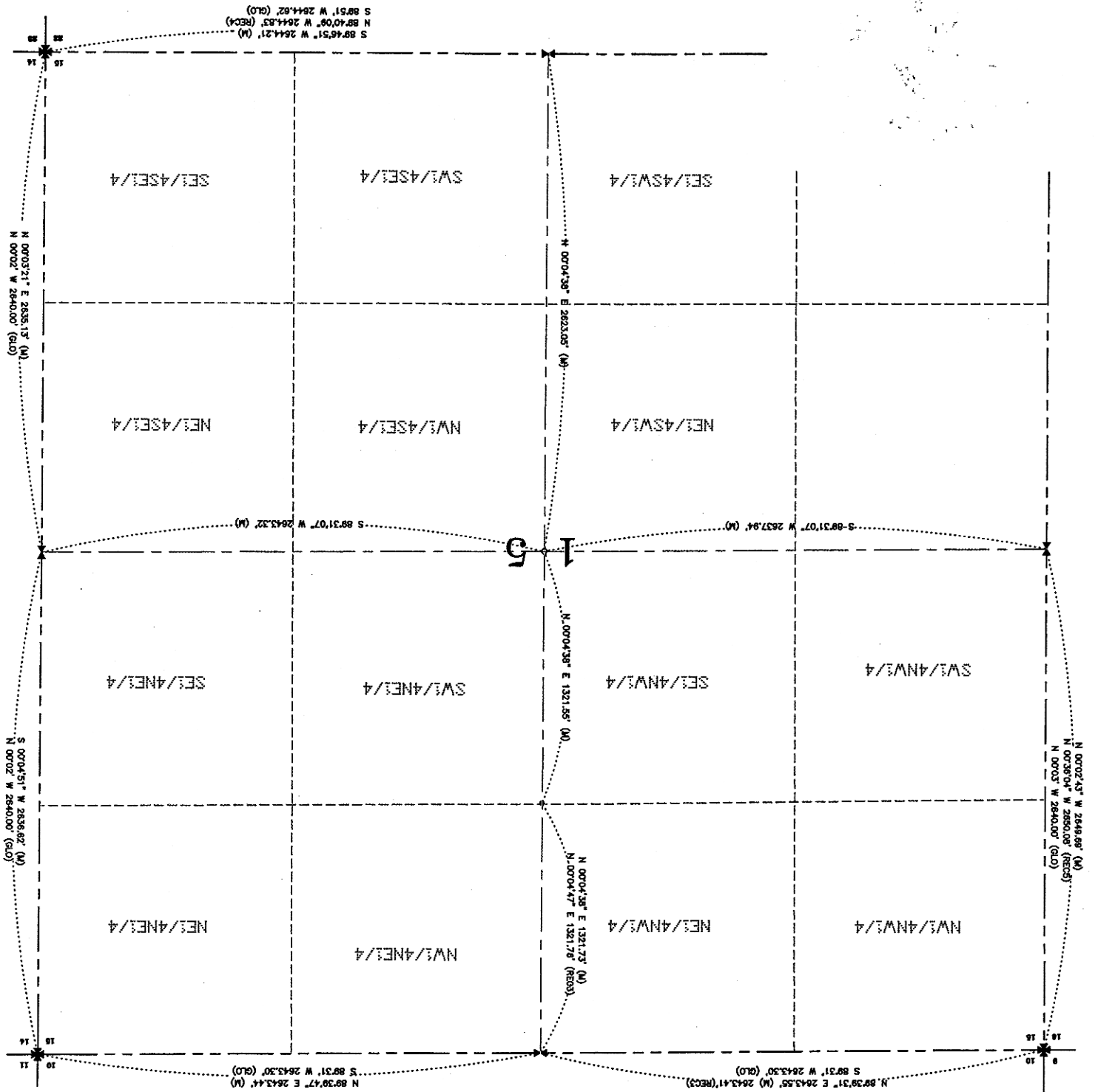
Office of Clerk and Recorder
 record" was filed for record
 was noted on the cross-
 book no. _____

557217 Fee: \$ 0.00 Bk Pg
 HILL COUNTY Filed 04/04/2005 At 10:25 AM
 DIANE E. MELLEME, Clerk & Recorder By Carolyn Patrick
 Return to: CICON & ASSOCIATES P. O. BOX 541
 CHESTER MT 59522



557217

Cross Index No. L-13 T 32N R 16E P.M.M.



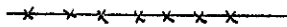
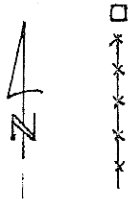
CERTIFIED LAND CORNER RECORDATION

DESCRIPTION OF CORNER EVIDENCE FOUND, AND ORIGINAL RECORD (IF KNOWN)

Found 4" x 5" rhyolite stone, 5" above ground, marked "1/4" on west face.
Stone firmly set and in good condition.

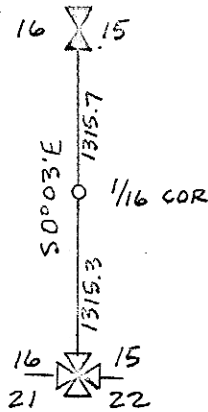
DESCRIPTION OF MONUMENT AND ACCESSORIES ESTABLISHED TO PERPETUATE THE ORIGINAL LOCATION OF THIS CORNER:

Date of work: JULY 28, 1976



Stone lies 3' north of the end of a N-S fence in line with an E-W fence to the East.

SKETCH, WITH COURSE AND DISTANCE TO ADJACENT CORNERS IF DETERMINED IN THIS SURVEY. (MAY SKETCH OR PASTE REPRODUCTION ON REVERSE SIDE.)



Surveyor's Seal

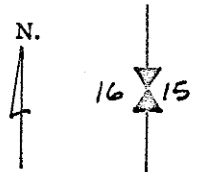
I, MICHAEL A. MURRAY
certify that the information shown herein is true and correct.

Michael A. Murray
Signature of Ground Party Chief

I, D. LESTER TURNBULL
certify that I have carefully performed or reviewed the work done on the diagrammed corner as reported on this recordation form and approve the same.

D. Lester Turnbull
Signature of Surveyor

DIAGRAM OF CORNER:



1/4 COR.
T. 32 N. R. 16 E.

= Corner recorded on the sheet

2628 ES
Registration Number

446046

Office of Clerk and Recorder, County of HILL

This "corner record" was filed for record on the 10th day of APRIL, 1978, was noted on the cross-index plat and is assigned page No. _____, in book No. _____

A. M. Somerville
County Official

Cross Index No. L-13 T. 32N R. 16E Mer.