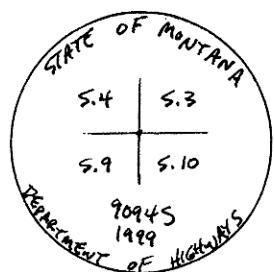
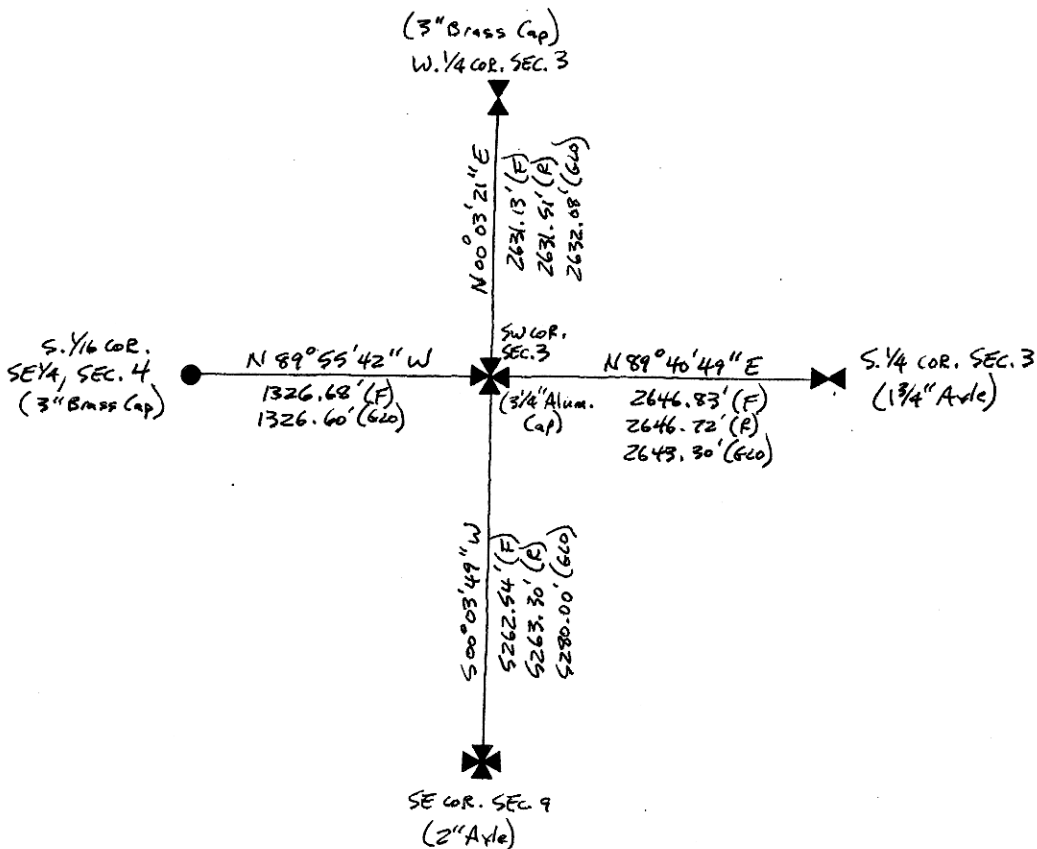


- INSTRUCTIONS
1. Original & subsequent record used to evaluate the corner position.
  2. Description of evidence found, note discrepancies in the record, state method of establishing lost or obliterated corners.
  3. Description of monument and accessories set to perpetuate the corner position.
  4. Sketch or corner, show all pertinent data which can best be shown in a sketch example, corner marking, topography lies, position of accessories, etc.
  5. Certification must be signed and sealed by Registered Land Surveyor in State of Montana.
  6. Fill in Cross Index & Section Diagram at bottom of sheet.

## CERTIFIED CORNER RECORDATION

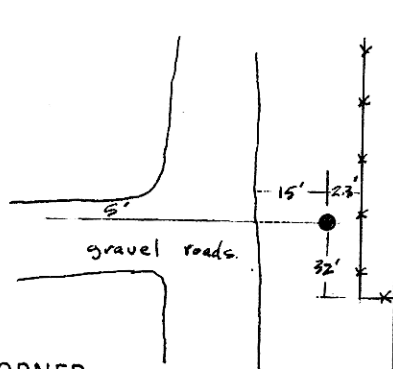
Corner SW COR. SECTION 3 T. 32N R. 16E P.M.M. HILL County

- 1) '1894' GLO - Set a sandstone 16 x 12 x 10 ins. 11 ins. in the ground for Cor. to Secs. 3, 4, 9 & 10 marked with 5 notches on S. and 3 notches on E. edges. Raised a mound of stone alongside, pits impracticable.  
'1954' GLO - Set brass cap.
- 2) No original or subsequent evidence found. Position was established by double proportion between subsequent corners to the east, west, north and south.
- 3) Set a MDOH 2 1/2" aluminum pipe with a 3 1/4" aluminum cap and a witness post east in fenceline.



3 1/4" Alum. Cap

SKETCH OF CORNER



CERTIFICATION

I, ROBERT F. STANGLER, Registered Land Surveyor in and for the State of Montana, certify the information shown hereon is true and correct.

*Robert F. Stangler*  
Signature of Registered Land Surveyor

I, ROBERT F. STANGLER, Registered Land Surveyor, certify that this Corner Record correctly represents work performed by me or under my direction in compliance with the "Corner Recordation Act" (70-22-101), et seq., of the State of Montana.

*Robert F. Stangler*  
Signature of Surveyor & Seal

Date: 12/15/99 Reg. No. 9094S

Employer: TD&H, INC.

Office of Clerk and Recorder, County of HILL, This "corner record" was filed for record on the APRIL 27th, 2000 AT 10:50 A.M. ~~XXXXXXXX~~, was noted on the cross-index plat and is assigned page No. XXXXX, in book No. XXXXXXXX, in DIANE E. MELLEMEYER, CLERK & RECORDER, County Official DEPUTY ✓

Sec. 3


5322945

FEE: NONE

Cross Index No. E-13 T. 32N R. 16E P.M.M.

• corner this sheet

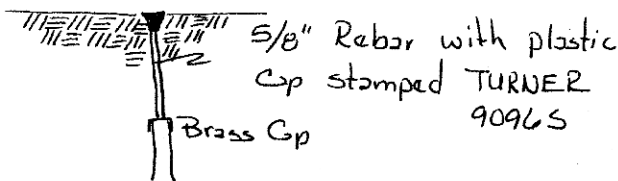
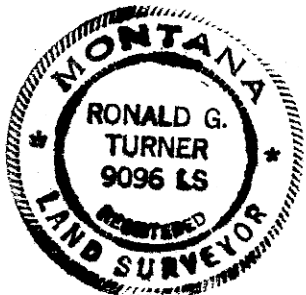
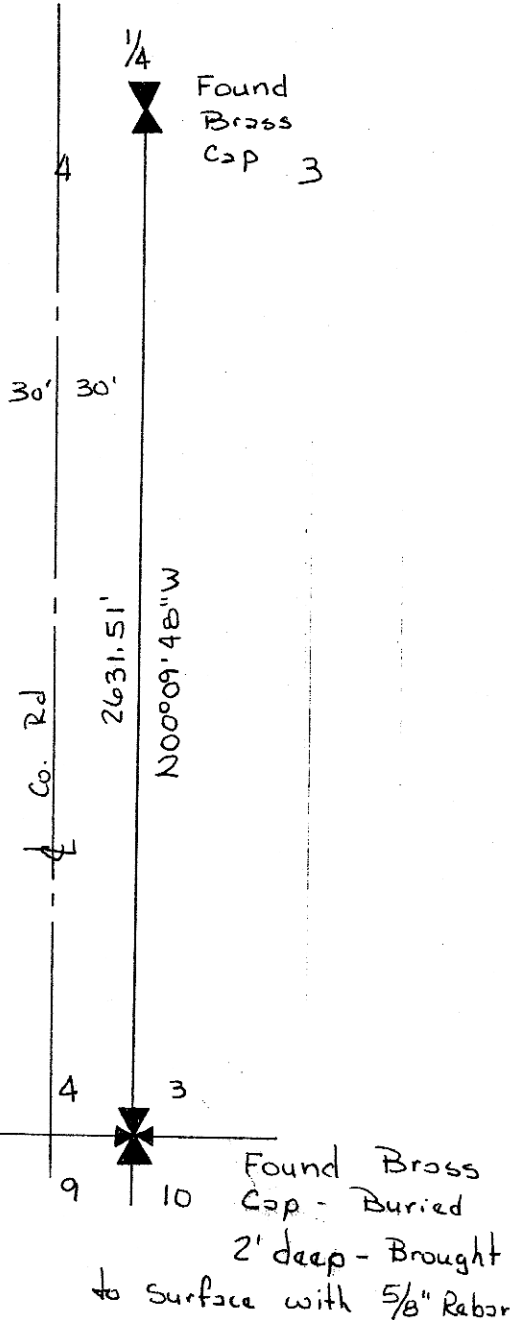
**INSTRUCTIONS**

1. Original and/or subsequent record used to evaluate the corner position.
2. Description of evidence found, note discrepancies in the record, state method of establishing lost or obliterated corners.
3. Description of monument and accessories set to perpetuate the corner position.
4. Sketch of corner, show all pertinent data which can best be shown in a sketch example, corner marking, topography ties, position of accessories, etc.
5. Certification must be signed and sealed by Land Surveyor registered in the State of Montana.
6. Fill in Cross Index & Section Diagram at bottom of sheet.

**CERTIFIED CORNER RECORDATION**

Corner SE Sec. 4 T. 32 N R. 16 E P.M.M. Hill County

1991 - Found BLM Brass Cap  
2 feet deep - Brought  
to surface with 5/8"  
Diameter Rebar with  
yellow plastic cap stamped  
"9096 S TURNER"



**SKETCH OF CORNER**

**CERTIFICATION**

I, \_\_\_\_\_  
certify the information shown herein is true and correct.

Signature Ground Party Chief

I, Ronald G Turner

certify that this Corner Record correctly represents work performed by me or under my direction in compliance with the "Corner Recordation Act" (70-22-101, et seq., M.C.A.)

Ronald G Turner  
Signature of Surveyor & Seal

Date: 1-09-91 Reg. No. 9096 S

Employer: \_\_\_\_\_

Office of Clerk and Recorder, County of HILL. This "corner record" was filed for record on 30th of January, 1991 was noted on the cross-index plat and is assigned page No. XXXXXXXXXXXX, in book No. XXXXXXXXXXXX

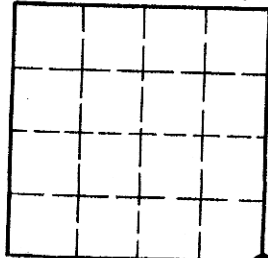
DIANE E. MELLEM, CLERK & RECORDER

County Official

Carolyn Patrick DEPUTY  
Cross Index No. E-13 T. 32 R. 16 P.M.M.

Adopted July 1, 1981, Montana Board of Professional Engineers & Land Surveyors

Sec. 4 T 32 N R 16 E



• - corner this sheet

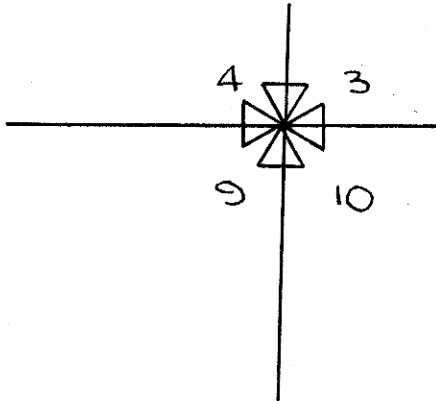
FEE: NONE

INSTRUCTIONS

1. Original and/or subsequent record used to evaluate the corner position.
2. Description of evidence found, note discrepancies in the record, state method of establishing lost or obliterated corners.
3. Description of monument and accessories set to perpetuate the corner position.
4. Sketch of corner, show all pertinent data which can best be shown in a sketch example, corner marking, topography ties, position of accessories, etc.
5. Certification must be signed and sealed by Land Surveyor registered in the State of Montana.
6. Fill in Cross Index & Section Diagram at bottom of sheet.

CERTIFIED CORNER RECORDATION

Corner NE CORNER SECTION 9 T. 32N R. 16E P.M.M. HILL County



BLM BRASS CAP  
 AS SHOWN ON CERTIFIED  
 CORNER RECORDATION  
 DOCUMENT NO. 471577  
 FILED MAY 29, 1984

NOTE: NE CORNER SECTION 9  
IS ALSO THE NW CORNER OF  
SECTION 10

REFER TO  
ABOVE

SKETCH OF CORNER

CERTIFICATION

I, RONALD F. BASTIN  
 certify the information shown herein is true and correct.  
Ronald F. Bastin  
 Signature Ground Party Chief

I, RONALD F. BASTIN  
 certify that this Corner Record correctly represents work performed  
 by me or under my direction in compliance with the "Corner  
 Recordation Act" (70-22-161, et seq., M.C.A.)  
Ronald F. Bastin  
 Signature of Surveyor & Seal

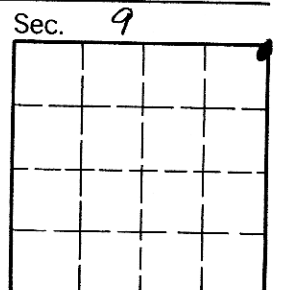
Date: 6-21-83 Reg. No. 3517ES  
 Employer: SELF

Office of Clerk and Recorder, County of HILL. This "corner record" was filed for record on June 22nd, 1984 AT 9:10 A.M.

was noted on the cross-index plat and is assigned page No. X XX, in book No. X X X DIANE E. MELLEME,

Carolyn Patrick  
DEPUTY ( FEE: \$ NONE ) ✓

County Official  
Cross Index No. E-13 T. 32 R. 16 P.M.M.



471857

• - corner this sheet

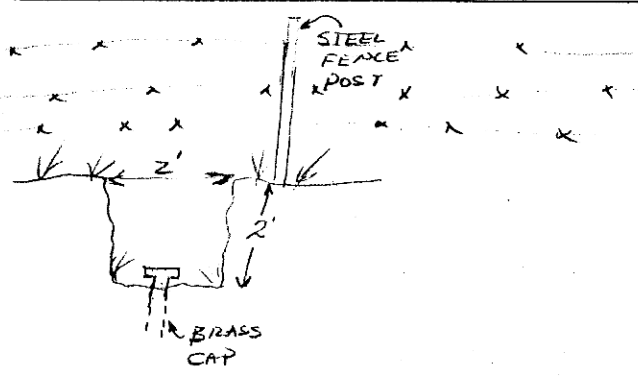
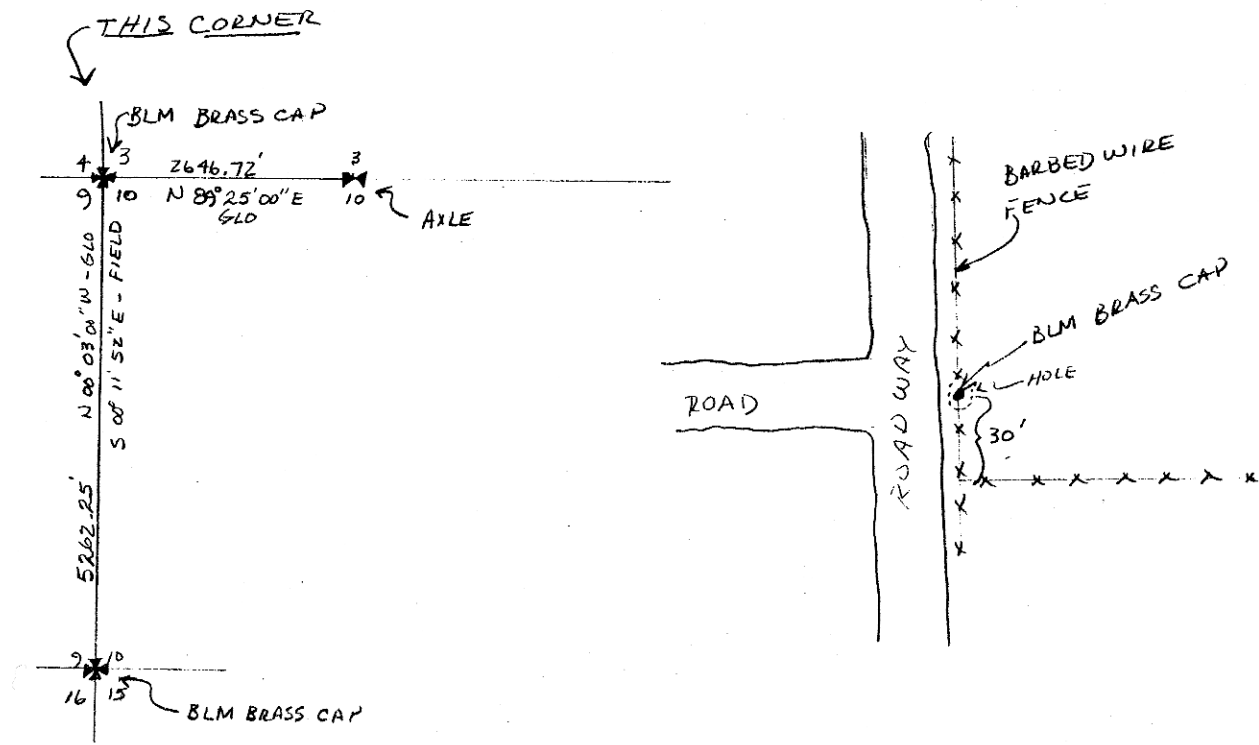
INSTRUCTIONS

1. Original and or substituted record used to evaluate the corner position.
2. Description of evidence found, and, note discrepancies in the record, state method of establishment, lost or obliterated corners.
3. Description of monument and accessories set to perpetuate the corner position.
4. Sketch or corner, show all pertinent data which can best be shown in a sketch example, corner marking, topography ties, position of accessories, etc.
5. Certification must be signed and sealed by Registered Land Surveyor in State of Montana.
6. Fill in Cross Index & Section Diagram at bottom of sheet.

CERTIFIED CORNER RECORDATION

Corner NW COR. SECTION 10 T. 32N R. 16E P.M.M. HILL County

AT THE NW CORNER OF SECTION 10, T32N, R16E, I FIND A BLM BRASS CAP MONUMENT. MONUMENT IS LOCATED UNDER A FENCE LINE ABOUT 30 FEET NORTH OF THE INTERSECTION OF TWO FENCE LINES. MONUMENT IS BURIED ABOUT TWO (2') FEET DEEP. A ROADWAY IS LOCATED ABOUT 10' TO THE WEST OF THE MONUMENT.



SKETCH OF CORNER

CERTIFICATION

I, DAVID M. ELIAS  
 certify the information shown herein is true and correct.  
David M. Elias  
 Signature Ground Party Chief

I, T H THOMAS  
 certify that this Corner Record correctly represents work performed by me or under my direction in compliance with the "Corner Recordation Act" (70-22-101, et seq., M.D.A.)  
T H Thomas  
 Signature of Surveyor & Seal

Date: 5/24/84 Reg. No. 646ES  
 Employer: THOMAS, DEAN & LOSKINS

Office of Clerk and Recorder, County of HILL. This "corner record" was filed for record on the 29th of May ~~1984~~ of 1984 was noted on the cross-index plat and is assigned page No. \_\_\_\_\_, in book No. \_\_\_\_\_

DIANE E. MELLEME,  
 County Official  
Carolyn Galuska  
 Deputy T. 32 R. 16 P.M.M.

Sec. 10


• - corner this sheet

471577