

CERTIFIED LAND CORNER RECORDATION

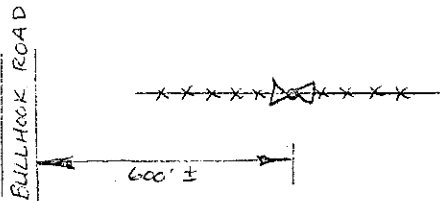
DESCRIPTION OF CORNER EVIDENCE FOUND, AND ORIGINAL RECORD (IF KNOWN)

Found 3" x 6" sandstone 4" above ground, marked "1/4" on north face, set firmly in a ring of rocks.

GLO RECORD: Set a sandstone 12"x8"x6", 8" in the ground for 1/4 Section corner marked 1/4 on north face. Raised a mound of stone along side.

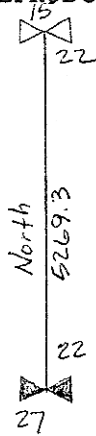
DESCRIPTION OF MONUMENT AND ACCESSORIES ESTABLISHED TO PERPETUATE THE ORIGINAL LOCATION OF THIS CORNER:

Date of work: 7-28-76



Stone lies in E-W fenceline 600'+/- east of Bullhook Road. Remounded stones 1' north.

SKETCH, WITH COURSE AND DISTANCE TO ADJACENT CORNERS IF DETERMINED IN THIS SURVEY. (MAY SKETCH OR PASTE REPRODUCTION ON REVERSE SIDE.)



Surveyor's Seal

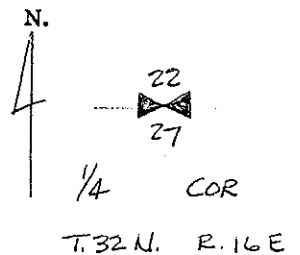
I, MICHAEL A. MURRAY
 certify that the information shown herein is true and correct.

Michael A. Murray
 Signature of Ground Party Chief

I, D. LESTER TURNBULL
 certify that I have carefully performed or reviewed the work done on the diagrammed corner as reported on this recordation form and approve the same.

D. Lester Turnbull
 Signature of Surveyor

DIAGRAM OF CORNER:



= Corner recorded on the sheet

2628 ES
 Registration Number

446050

Office of Clerk and Recorder, County of HILL

This "corner record" was filed for record on the 10th day of APRIL, 1978, was noted on the cross-index plat and is assigned page No. _____, in book No. _____

D. M. Sammis
 County Official
 Cross Index No. R-15 T. 32N R. 16E Mer.