

CERTIFIED LAND CORNER RECORDATION

SECTION 9 TOWNSHIP 32 NORTH, RANGE 34 WEST, M.P.M.

DESCRIPTION OF CORNER EVIDENCE FOUND, AND ORIGINAL RECORD (IF KNOWN)

Descriptions of corners on diagram on other side.

DESCRIPTION OF MONUMENT AND ACCESSORIES ESTABLISHED TO PERPETUATE THE ORIGINAL LOCATION OF THIS CORNER:

Descriptions of corners set reported on diagram on other side.

Date of work: March 1977

SKETCH, WITH COURSE AND DISTANCE TO ADJACENT CORNERS IF DETERMINED IN THIS SURVEY. (MAY SKETCH OR PASTE REPRODUCTION ON REVERSE SIDE.)

SEE DIAGRAM ON OTHER SIDE

Surveyor's Seal



I, JACK H. NINNEMAN certify that the information shown herein is true and correct.

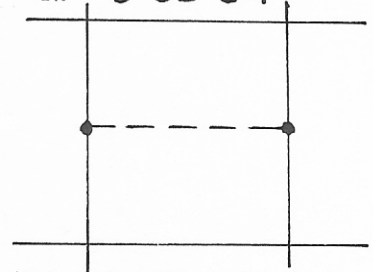
Signature of Ground Party Chief

I, Jack H. Ninneman certify that I have carefully performed or reviewed the work done on the diagrammed corner as reported on this recordation form and approve the same.

Signature of Surveyor

4661 S Registration Number

DIAGRAM OF CORNER: SEE reverse side N. 9-32-34



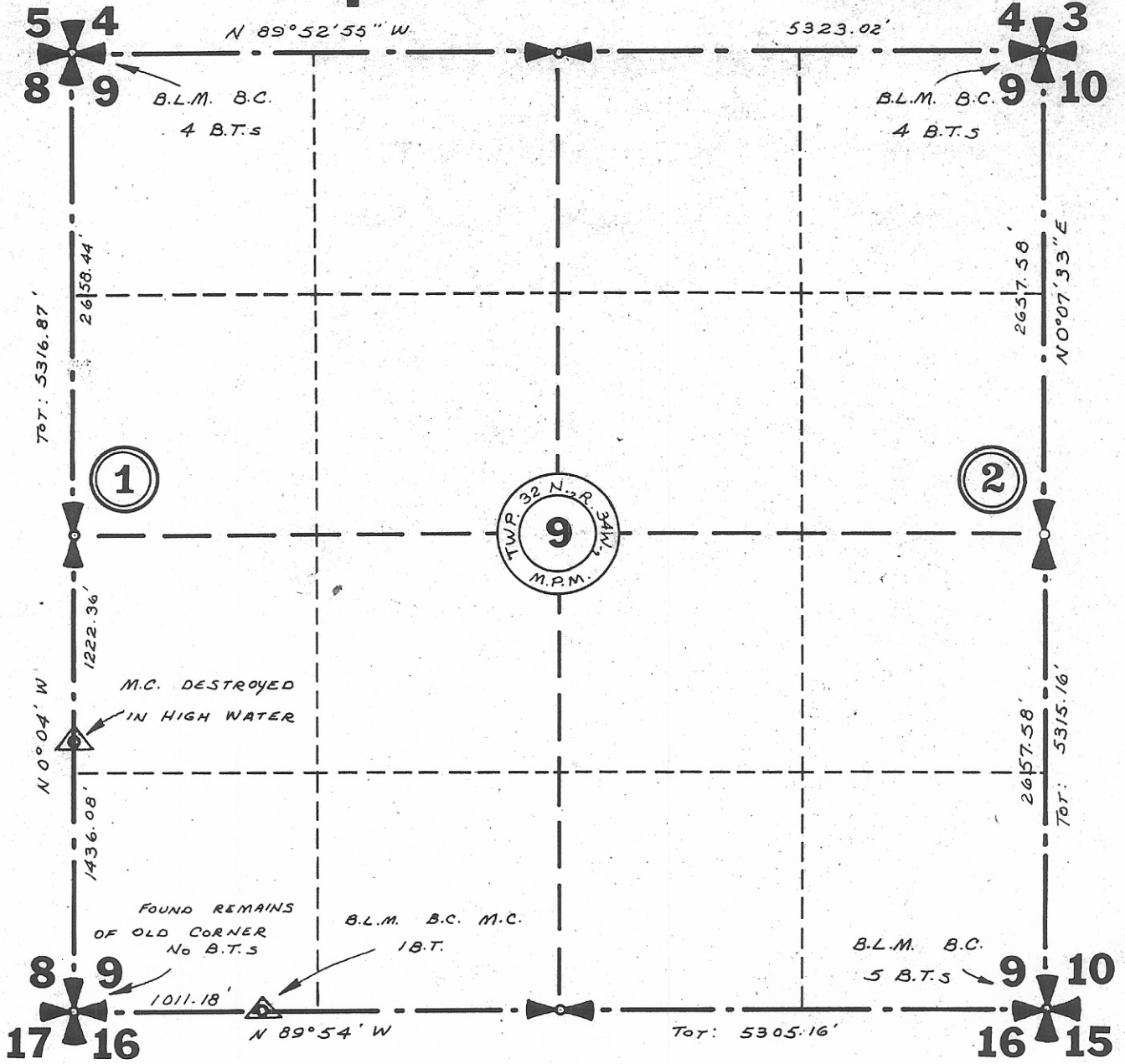
● = Corner recorded on the sheet

Office of Clerk and Recorder, County of Lincoln

This "corner record" was filed for record on the 17th day of May 1978, was noted on the cross-index plat and is assigned page No. 527, in book No. 1

Eleanor Vaughan by Sarah Martin County Official

# Sec. 9 Twp. 32 N., R. 34 W., M.P.M.



(1) Set 5/8"x24" Steel Rod with Cap stamped:  
J.H.N. 4661 S.

No B.T.s scribed or posted.

(2) Set 5/8"x24" Steel Rod with Cap stamped:  
J.H.N. 4661 S.

24" Fir bears N 40°W 10.7 Ft.  
Scribed 1/4 S 9 BT & Posted.