

INSTRUCTIONS

1. Original and/or subsequent record used to evaluate the corner position.
2. Description of evidence found, note discrepancies in the record, state method of establishing lost or obliterated corners.
3. Description of monument and accessories set to perpetuate the corner position.
4. Sketch of corner, show all pertinent data which can best be shown in a sketch example, corner marking, topography ties, position of accessories, etc.
5. Certification must be signed and sealed by Land Surveyor registered in the State of Montana.
6. Fill in Cross Index & Section Diagram at bottom of sheet.

CERTIFIED CORNER RECORDATION

Corner 1/4 Cor. of Secs. 9 & 16 T. 32 N. R. 34 W. P.M.M. Lincoln County

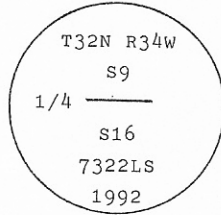
I. 1903 G.L.O. record by Allen B. Benedict: "Set a limestone, 15x7x5 ins., 10 ins. in the ground, for 1/4 sec. cor. marked 1/4 on N, face; from which

- A fir, 6 ins. diam., bears $S34^{\circ}30'W$, 22 lks. dist., mkd. 1/4 S16 BT.
- A fir, 16 ins. diam., bears $N3^{\circ}45'W$, 10 lks. dist., mkd. 1/4 S9 BT."

II. Found a stone, 8x6 ins., 6 ins. above ground, loosely set, mkd. 1/4 on N. face; from which

Rotten remains of a fir, bears $N4^{\circ}W$, 6.6 ft. (10 lks.) dist.

III. At corner position, set an aluminum pipe, 2 1/2 in. diam., 30 ins. long, 24 ins. in the ground with 3 1/4 in. diam. U.S.F.S. aluminum cap, marked as shown:



from which

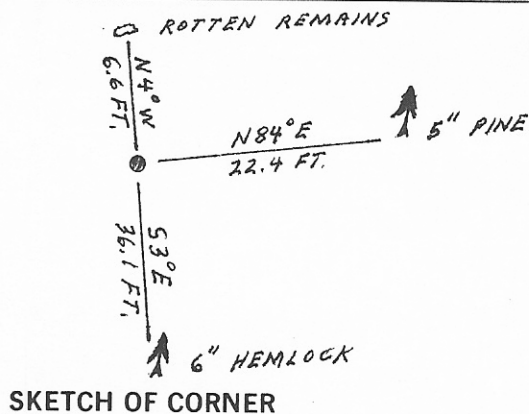
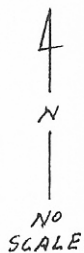
- A pine, 5 ins. diam., bears $N84^{\circ}E$, 22.4 ft. dist., mkd. 1/4 S9 BT.
- A hemlock, 6 ins. diam., bears $S3^{\circ}E$, 36.1 ft. dist., mkd. 1/4 S16 BT.

Painted red bands around the bearing trees and attached Land Survey Monument and Bearing Tree signs.

Bury the original stone alongside the aluminum monument.

Set a 6 ft. galvanized steel guard post with Land Survey Marker and Property Boundary decals, North, 4 ft.

Magnetic Declination: 20° East



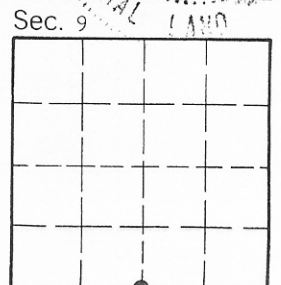
SKETCH OF CORNER

CERTIFICATION

I. Thomas M. Hommel
 certify the information shown herein is true and correct.
Thomas M. Hommel
 Signature Ground Party Chief

I. Alvah F. Hughes
 certify that this Corner Record correctly represents work performed by me or under my direction in compliance with the "Corner Recordation Act" (70-22-101, et seq., M.C.A.).
Alvah F. Hughes
 Signature of Surveyor & Seal
 Date: 12/18/92 Reg. No. 7322LS
 Employer: U.S. FOREST SERVICE

Office of Clerk and Recorder, County of Lincoln. This "corner record" was filed for record on Jan 19, 1993 was noted on the cross-index plat and is assigned page No. 5318, in book No. _____
Carol M. Cumming
 County Official



Cross Index No. J-11 T. 32 N R. 34 W PMM

• - corner this sheet