

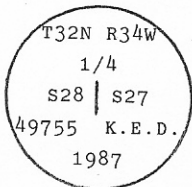
**INSTRUCTIONS**

1. Original and/or subsequent record used to evaluate the corner position.
2. Description of evidence found, note discrepancies in the record, state method of establishing lost or obliterated corners.
3. Description of monument and accessories set to perpetuate the corner position.
4. Sketch of corner, show all pertinent data which can best be shown in a sketch example, corner marking, topography ties, position of accessories, etc.
5. Certification must be signed and sealed by Land Surveyor registered in the State of Montana.
6. Fill in Cross Index & Section Diagram at bottom of sheet.

**CERTIFIED CORNER RECORDATION**

Corner E 1/4 Cor. Sec. 28 T. 32 N. R. 34 W., P.M.M. Lincoln County

I. 1903 GLO original record by A. B. BENEDICT: Set a stone and two bearing trees.  
1987 Certified Corner Recordation by K. E. DAVIS: "I found the original stone scribed 1/4 with a X on top. The stone was lying loosely in a hole under a 30" tamarack long butt. Replaced stone. Found no bearing trees.  
I set 3 1/4" Aluminum Cap on a 5/8" diam. x 4' long rebar with the original stone alongside. Cap is stamped:



from which

A 12" tamarack bears S 80° W 7.5 feet from the center of tree. Scribed 1/4 S28 BT. Notched at root crown.

A 8" tamarack bears S 5° W 9.3 feet from the center of tree. Scribed 1/4 S27 BT.

Painted a red band around BTs. Placed a St. Regis location posters on front of BTs."

II. Found a stone, 9x8 ins., 9 ins. above ground, loosely set, mkd. 1/4 on the West face, next to a 3 1/4 in. diam. aluminum cap mkd. as shown above, from which:

A larch, 15 ins. dia., bears S 80° W, 7.6 ft. dist., mkd. with a healed face.

A larch, 11 ins. dia., bears S 2° W, 9.8 ft. dist., mkd. with a healed face.

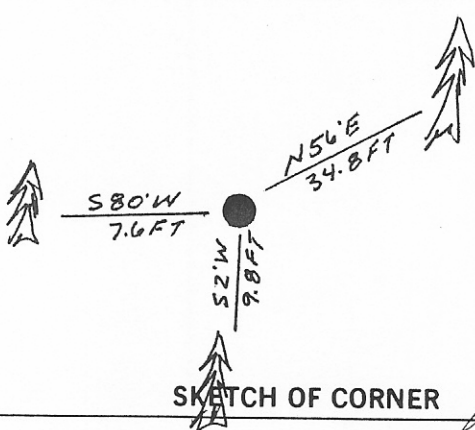
III. Established one new bearing tree:

A fir, 11 ins. dia., bears N 56° E, 34.8 ft. dist., mkd. 1/4 S27 BT.

Set a 6 ft. galvanized steel guard post with Land Survey Monument decal, West, 2 ft.

Painted red bands around the bearing trees and attached Land Survey Monument and Bearing Tree signs to the bearing trees.

Magnetic declination: 20° East



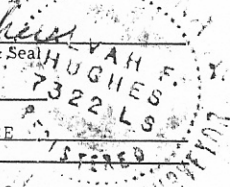
SKETCH OF CORNER

**CERTIFICATION**

I, Thomas M. Hommel  
 certify the information shown herein is true and correct.  
 Signature Thomas M. Hommel  
 Signature Ground Party Chief

I, Alvah F. Hughes  
 certify that this Corner Record correctly represents work performed by me or under my direction in compliance with the "Corner Recordation Act" (70-22-101, et seq., M.C.A.)  
 Signature of Surveyor & Seal Alvah F. Hughes

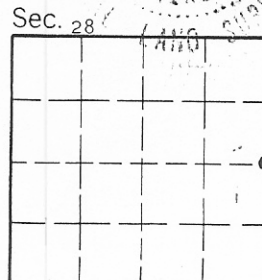
Date: 12/14/94 Reg. No. 7322LS  
 Employer: U.S. FOREST SERVICE



Office of Clerk and Recorder, County of Lincoln. This "corner record" was filed for record on May 25, 1995 was noted on the cross-index plat and is assigned page No. 7515, in book No. \_\_\_\_\_

Coral M. Cumming By DB  
 County Official

Cross Index No. T-13 T. 32N R. 34W PMM



• - corner this sheet