

**INSTRUCTIONS**

1. Original and/or subsequent record used to evaluate the corner position.
2. Description of evidence found, note discrepancies in the record, state method of establishing lost or obliterated corners.
3. Description of monument and accessories set to perpetuate the corner position.
4. Sketch of corner, show all pertinent data which can best be shown in a sketch example, corner marking, topography ties, position of accessories, etc.
5. Certification must be signed and sealed by Land Surveyor registered in the State of Montana.
6. Fill in Cross Index & Section Diagram at bottom of sheet.

**CERTIFIED CORNER RECORDATION**

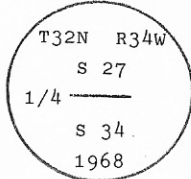
Corner N 1/4 Cor. Sec. 34 T. 32 N. R. 34 W. P.M.M. Lincoln County

I. 1903 GLO original record by A. B. BENEDICT: Set a limestone and two bearing trees.

1968 BLM Remonumentation Record by W. E. DAMM et. al.: The 1/4 sec. cor. of secs. 27 and 34, monumented with a limestone, 16x10x8 ins., firmly set, mkd. 1/4 on the N. face, and witnessed by the remains of the original bearing trees.

At the corner point

Set an iron post, 30 ins. long, 2 1/2 ins. diam., 26 ins. in the ground, with brass cap mkd.



from which

The original bearing trees:

- A stump hole, bears N 13 1/2° E, 12 lks. dist., with a fallen log having no visible marks. (Record)
- A snag, 10 ins. diam., bears S 14° E, 14 lks. dist., mkd. 1/4. (Record: S 14° W, 14 lks.)

The new bearing trees:

- A larch, 11 ins. diam., bears N 1/2° E, 10 lks. dist., mkd. 1/4 S27 BT.
- A cedar, 8 ins. diam., bears S 4 1/2° W, 41 lks. dist., mkd. 1/4 S34 BT.

II. Found a 2 1/2 in. diam. iron pipe, 5 ins. above ground, firmly set, with a 3 1/4 in. diam. BLM brass cap, mkd. as shown above.

from which:

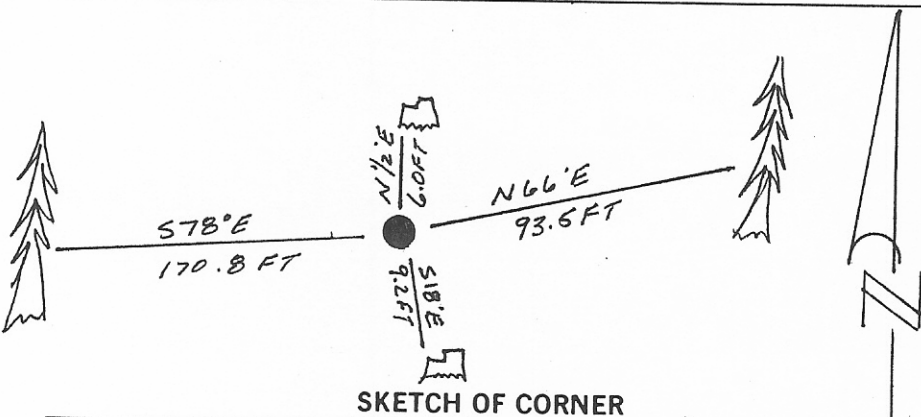
- A larch stump, bears N 1/2° E, 6.0 ft. dist., with no visible marks.
- A fir stump, bears S 18° E, 9.2 ft. dist., mkd. with a visible face.

III. Established two new bearing trees

- A cedar, 9 ins. diam., bears N 66° E, 93.5 ft. dist., mkd. 1/4 S27 BT.
- A cedar, 8 ins. diam., bears S 78° E, 170.8 ft. dist., mkd. 1/4 S34 BT.

Painted red bands around the bearing trees and attached Land Survey Monument and Bearing Tree signs to the bearing tree.

Set a 6 ft. galvanized steel guard post with Land Survey Monument decal, South, 3 ft.  
Magnetic declination: 20° East



SKETCH OF CORNER

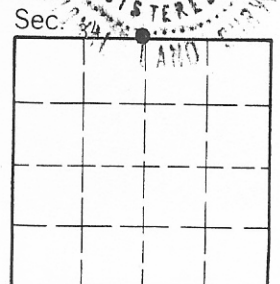
**CERTIFICATION**

I. Thomas M. Hommel  
certify the information shown herein is true and correct.  
*Thomas M. Hommel*  
Signature Ground Party Chief

I. Alvah F. Hughes  
certify that this Corner Record correctly represents work performed by me or under my direction in compliance with the "Corner Recordation Act" (70-22-101, et seq., M.C.A.).  
*Alvah F. Hughes*  
Signature of Surveyor & Seal  
Date: 12/14/94 Reg. No. 7322 LS  
Employer: U.S. FOREST SERVICE

Office of Clerk and Recorder, County of Lincoln. This "corner record" was filed for record on May 25, 1995 was noted on the cross-index plat and is assigned page No. 7516, in book No. \_\_\_\_\_

Coal M. Cummins By PCB  
County Official



Cross Index No. V-15 T. 32N R. 34W P.M.M.

• - corner this sheet