

INSTRUCTIONS

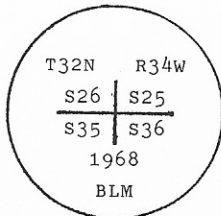
1. Original and/or subsequent record used to evaluate the corner position.
2. Description of evidence found, note discrepancies in the record, state method of establishing lost or obliterated corners.
3. Description of monument and accessories set to perpetuate the corner position.
4. Sketch of corner, show all pertinent data which can best be shown in a sketch example, corner marking, topography ties, position of accessories, etc.
5. Certification must be signed and sealed by Land Surveyor registered in the State of Montana.
6. Fill in Cross Index & Section Diagram at bottom of sheet.

CERTIFIED CORNER RECORDATION

Corner S. W. of Sec. 25 T. 32 N. R. 34 W. P.M.M. Lincoln County

I. 1903 G.L.O. record by A. B. BENEDICT: Set a limestone monument and four bearing trees.

1968 B.L.M. remonumentation record by W. E. DAMM et al: At the cor. of secs. 25, 26, 35 and 36, from original evidence, set a 2 1/2 in. dia., 30 in. long iron pipe, 10 ins. in the ground, with a brass cap marked as shown:



from which:

- BT- S 25, 7 in. fir, N 58 1/4° E, 37 lks., new BT.
- BT- S 36, 12 in. fir, S 18° E, 53 lks., new BT.
- BT- S 35, 8 in. fir, S 30 1/2° W, 45 lks., new BT.
- BT- S 26, 7 in. fir, N 56° W, 30 lks., new BT.

Bury the original stone alongside and raise a mound of stone around the iron pipe.

1983 Corner Recordation filed by T. C. HILL:

- Found iron pipe and cap 15 ins. above ground.
- Found and painted red bands around all 4 BT's.

II. Found a iron pipe, 15 ins. above ground, firmly set with 2 1/2 ins. diam., B.L.M. brass cap, marked as shown above, from which:

- A fir, 11 ins. diam., bears N57° E, 25.2 ft. (38.1 lks.) dist., healed face.
- A fir, 14 ins. diam., bears S16° E, 34.8 ft. (52.7 lks.) dist., healed face.
- A fir snag, 11 ins. diam., bears S32° W, 29.5 ft. (44.7 lks.) dist., visible scribe.
- A fir, 10 ins. diam., bears N54° W, 19.7 ft. (29.8 lks.) dist., healed face.

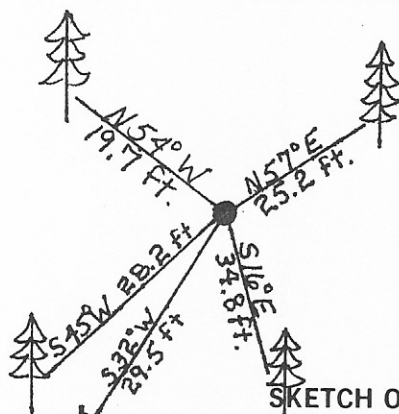
III. Established one new bearing tree:

A fir, 14 ins. in diam., bears S45° W, 28.2 ft. dist., mkd. T32N R34W S 35 BT.

Painted a red band around the bearing trees and attached Land Survey Monument and Bearing Tree signs.

Set a 6 ft. galvanized steel guard post with Land Survey Marker and Property Boundary decals, North, 3 ft.

Magnetic Declination: 20° East



SKETCH OF CORNER

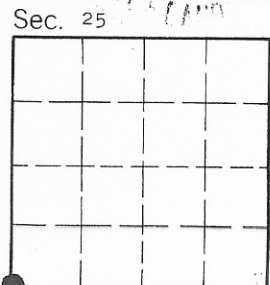
CERTIFICATION

I, Rex O. Rice
 certify the information shown herein is true and correct.
Rex O. Rice
 Signature Ground Party Chief

I, Alvah F. Hughes
 certify that this Corner Record correctly represents work performed by me or under my direction in compliance with the "Corner Recordation Act" (70-22-101, et seq. M.C.A.)
Alvah F. Hughes
 Signature of Surveyor & Seal

Date: 12/16/93 Reg. No. 732218
 Employer: U.S. FOREST SERVICE

Office of Clerk and Recorder, County of Lincoln. This "corner record" was filed for record on Jan 12, 1994 was noted on the cross-index plat and is assigned page No. 6095, in book No. _____, in Carol M. Cummings, RB County Official



V-21 Cross Index No. _____ T. 32 N. R. 34 W. P.M.M.

• - corner this sheet