

### CERTIFIED LAND CORNER RECORDATION

#### DESCRIPTION OF CORNER EVIDENCE FOUND, AND ORIGINAL RECORD (IF KNOWN)

Evidence Found: At the Quarter corner of Section 12 and 7, we found an 1 3/4" Iron pipe with an 1 1/2" lead cap with no marks buried 4" at the intersection of the South edge of the railroad service road and Centerline of an approach from the South. The original monument was not found, T.33N., Sec. 12 R.6W., Sec. 7 R.5W.

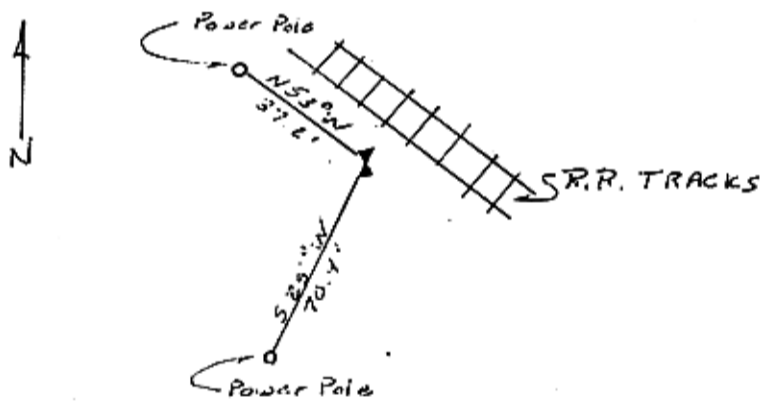
#### DESCRIPTION OF MONUMENT AND ACCESSORIES ESTABLISHED TO PERPETUATE THE ORIGINAL LOCATION OF THIS CORNER:

Date of work: 7-16-91

Set: From the Quarter corner a nail in an AL Tag (45-4 LP-P, 1956) on power pole 7S7 bears S25°W, 70.4 feet. A nail in an AL Tag (45-5, LP-PA, 8, 1982) on power pole 7S8 bears N53°W, 37.2'.

We hung survey monument signs on both power poles.

#### SKETCH, WITH COURSE AND DISTANCE TO ADJACENT CORNERS IF DETERMINED IN THIS SURVEY. (MAY SKETCH OR PASTE REPRODUCTION ON REVERSE SIDE.)

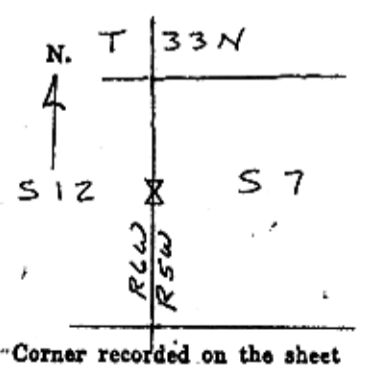


Surveyor's Seal

I, Guy Dubois  
certify that the information shown herein is true and correct.  
Guy Dubois  
Signature of Ground Party Chief

I, Thomas L. Russell  
certify that I have carefully performed or reviewed the work done on the diagrammed corner as reported on this recordation form and approve the same.  
Thomas L. Russell  
Signature of Surveyor

#### DIAGRAM OF CORNER:



82385  
Registration Number

Office of Clerk and Recorder, County of Wagoner

This "corner record" was filed for record on the 24 day of Oct, 1991, was noted on the cross-index plat and assigned page No. 499, in book No. 48 Misc Loretta Barron

Loretta Barron  
County Official

Cross Index No. G-1 T. 33N R. 5W Mer

T3<sup>2</sup>N  
R 1 N 6 R5W  
12 7

S00°12'05"E 2652.44' (M)

This Certificate

S00°09'00"E 7.24' (REC)  
S01°28'58"E 7.27' (M)

S57°53'00"E 215.45' (REC)  
S58°00'12"E 215.25' (M)

32322.2442  
0.74 Ac.

RANGE 6 WEST  
BASIS OF BEARING  
N00°09'00"W 2638.30'  
N00°09'00"W 231.30' (REC)  
N00°08'30"W 231.01' (M)

RANGE 5 WEST

N57°56'00"W 115.00' (REC)  
S57°54'23"E 115.07' (M)

S25°20'40"W 197.15' (REC)  
S25°22'47"W 197.12' (M)

9829.258 FT<sup>2</sup>  
0.23 Ac.

S00°09'00"W 231.08' (REC)  
S00°08'34"W 231.46' (M)

N57°56'00"W 100.35' (REC)  
N57°53'48"W 100.42' (M)

227256

STATE OF MONTANA } ss  
 County of Glacier  
 Filed for Record this 24 day of  
October A.D. 19 91  
 at 4:40 o'clock P M  
 and recorded in Book 48 of  
Misc on Page 499  
 Clara Henderson  
 County Recorder  
 By LK Barson  
 Deputy  
 Return to \_\_\_\_\_  
 Fee \$ \_\_\_\_\_