

INSTRUCTIONS

1. Original and/or subsequent record used to evaluate the corner position.
2. Description of evidence found, note discrepancies in the record, state method of establishing lost or obliterated corners.
3. Description of monument and accessories set to perpetuate the corner position.
4. Sketch of corner, show all pertinent data which can best be shown in a sketch example, corner marking, topography ties, position of accessories, etc.
5. Certification must be signed and sealed by Land Surveyor registered in the State of Montana.
6. Fill in Cross Index & Section Diagram at bottom of sheet.

**CERTIFIED CORNER RECORDATION**

Corner 1/4 SEC. COR. SECS. 17&18

T. 33N., R. 6W., P.M.M.

GLACIER County

RECORD GLO  
1907

Set a granite stone 12"x8"x6", 9" in the ground for 1/4 section corner. Marked 1/4 on West face. Dig pits 18"x18"x12", North and South of corner, 3' dist. And raise a mound of earth, 3 1/2' base, 1 1/2' high, West of corner.

RECORD GLO  
1922

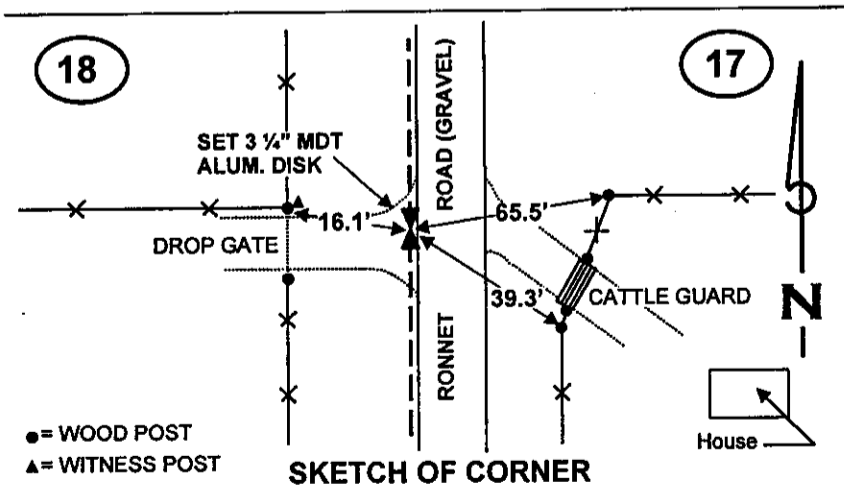
Found a sandstone, 10"x8", 6" above the ground, marked and witnessed as described by the Surveyor General. East of stone and 1/2 link distant, is an iron pipe, 2" in diameter, 10" above the ground, for corner of allotments 886, 887, 1029 & 2381. With the numbers of the allotments stamped on the sides....

FOUND MDT  
2000

No evidence of the 1/4 section corner or allotment pipe found. This position was established by Single-Proportion between the S1/16 corner of Sections 17 & 18, T33N, R6W and the NW corner of Section 17, T33N, R6W.

SET MDT  
2001

Set an MDT 3 1/4" aluminum disk on a 3" diameter aluminum pipe, 30" long, 36" in the ground for 1/4 corner of Sections 17 & 18. Point falls along the West shoulder of Ronnet Rd. in an approach to the West.  
Set a witness post with MDT decal 16.1' NW of monument at East face of fence intersection running North, South & West.



**CERTIFICATION**

I, Timothy A. Ferguson  
certify the information shown herein is true and correct.

*[Signature]*  
Signature of Ground Party Chief

I, Theodore M. Brown  
certify that this Corner Record correctly represents work performed by me or under my direction in compliance with the "Corner Recordation Act" (70-22-104, et seq.)

*[Signature]*  
Signature of Surveyor & Seal 1702LS

Date: 6/4/02 Reg. No. 1702

Employer: Montana Department of Transportation

Office of Clerk and Recorder, County of Glacier. This "corner record" was filed for record on June 5, 2002, was noted on the cross-index plat, and is assigned Page No. \_\_\_\_\_, in Book No. \_\_\_\_\_, Doc # 250948

*[Signature]*  
County Official

Sec. 17


● — Corner this sheet

Cross Index No. L-5 T. 33N., R. 6W., PMM