

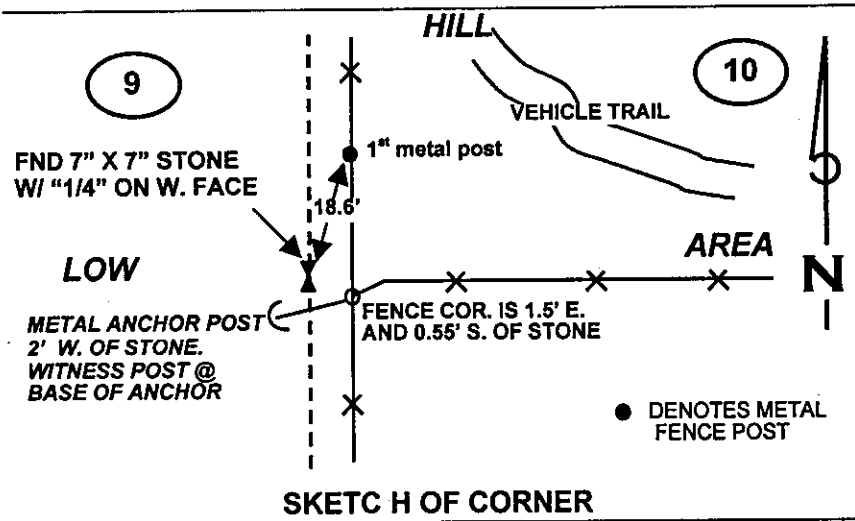
**INSTRUCTIONS**

1. Original and/or subsequent record used to evaluate the corner position.
2. Description of evidence found, note discrepancies in the record, state method of establishing lost or obliterated corners.
3. Description of monument and accessories set to perpetuate the corner position.
4. Sketch of corner, show all pertinent data which can best be shown in a sketch example, corner marking, topography ties, position of accessories, etc.
5. Certification must be signed and sealed by Land Surveyor registered in the State of Montana.
6. Fill in Cross Index & Section Diagram at bottom of sheet.

**CERTIFIED CORNER RECORDATION**

Corner 1/4 COR SECS 9 & 10 T. 33N., R. 6W., P.M.M. Glacier County

- RECORD GLO  
1907 Set granite stone 14"x9"x6", 10" in the ground for 1/4 section corner, marked 1/4 on West face. Dig pits 18"x18"x12" North and South of corner, 3' in distance. And raised a mound of earth, 3 1/2' base, 1 1/2' high, West of corner.
- RECORD GLO  
1922 Found a sandstone 6"x4"x3" above ground. Marked and witnessed as described by the Surveyor General. East of stone and 1 link distant, is an iron pipe 2" in diameter, 12" above ground, for corner of allotments "1985 & 2418", with the numbers of the allotments stamped on the sides.
- FOUND MDT  
2000 Found 7" x 7" granite stone, 6" above natural ground. Stone has 1/4 scribed on West face. Stone is 1.5' West of a fence corner. Fence is 4' high, running South, North and East.
- SET MDT  
2000 Set witness post with MDT decal 2' West of stone, at the base of metal anchor post for fence corner.



**CERTIFICATION**

I, Timothy A. Ferguson  
certify the information shown herein is true and correct.

*[Signature]*  
Signature of Ground Party Chief

I, Theodore M. Brown  
certify that this Corner Record correctly represents work performed by me or under my direction in compliance with the "Corner Recordation Act" (70-22-101).

*[Signature]*  
Signature of Surveyor & Seal

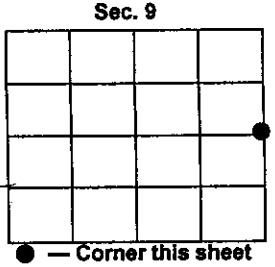
Date: 6/4/02 Reg. No. 1702LS

Employer: Montana Department of Transportation

*[Seal: THEODORE M. BROWN, REGISTERED LAND SURVEYOR, MONTANA]*

Office of Clerk and Recorder, County of Glacier. This "corner record" was filed for record on June 5, 2002, was noted on the cross-index plat, and is assigned Page No. \_\_\_\_\_, in Book No. Doc 250952

*[Signature]*  
County Official



Cross Index No. G-13 T. 33N., R. 6W., PMM