

INSTRUCTIONS

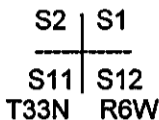
1. Original and/or subsequent record used to evaluate the corner position.
2. Description of evidence found, note discrepancies in the record, state method of establishing lost or obliterated corners.
3. Description of monument and accessories set to perpetuate the corner position.
4. Sketch of corner, show all pertinent data which can best be shown in a sketch example, corner marking, topography ties, position of accessories, etc.
5. Certification must be signed and sealed by Land Surveyor registered in the State of Montana.
6. Fill in Cross Index & Section Diagram at bottom of sheet.

CERTIFIED CORNER RECORDATION

Corner COR. TO SECS. 1,2,11&12 T. 33N., R. 6W., P.M.M. Glacier County

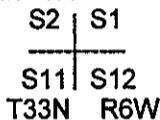
RECORD GLO Set a sandstone, 30"x12"x5", 22" in the ground for corner sections 1, 2, 11, & 12. Marked with 5
1900 notches on South and 1 notch on East edges. Dig pits 18"x18"x12" in each section, 5 1/2' in distance. And raise a mound of earth, 4' base, 2' high, West of corner.

RECORD Found iron post with brass cap marked:
H.C.STRONG
1977



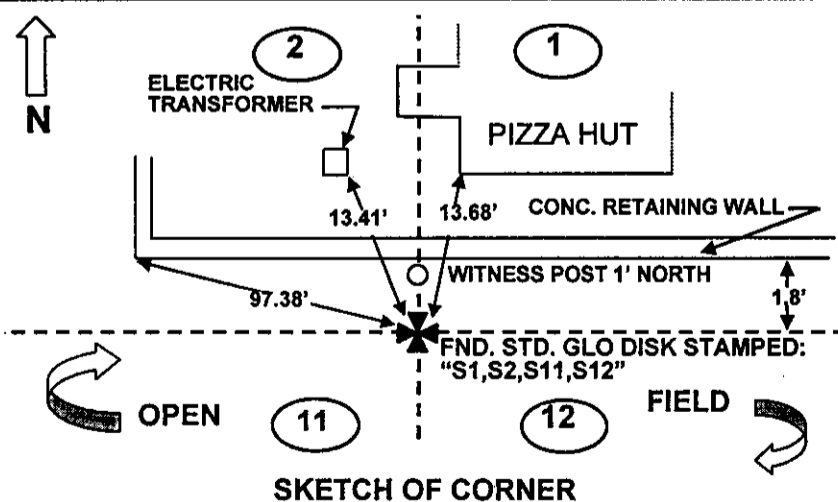
RECORD Found BLM brass cap 1.8' from edge of existing retaining wall and 97.2' from SW corner of retaining
J.M.CICON wall.
1996

FOUND MDT Found 1" iron pipe with 2 1/2" standard BLM brass disk. Disk is flush with natural ground and 1.8'
2000 South of concrete retaining wall for Pizza Hut. Disk is stamped:



SET MDT Set a witness post with MDT decal 1' North of the corner.
2000

See Certificate of Survey Number 411



CERTIFICATION

I, Timothy A. Ferguson
certify the information shown herein is true and correct.

[Signature]
Signature of Ground Party Chief

I, Theodore M. Brown
certify that this Corner Record correctly represents the information performed by me or under my direction in compliance with the "Corner Recordation Act" (70-22-101 et seq., MCA).

[Signature]
Signature of Surveyor & Seal

Date: 6/4/02 Reg. No. 11702LS

Employer: Montana Department of Transportation

Office of Clerk and Recorder, County of Glacier. This "corner record" was filed for record on June 5, 2002, was noted on the cross-index plat, and is assigned Page No. _____, in Book No. Doc 250926

[Signature]
County Official

Sec. 1

● -- Corner this sheet

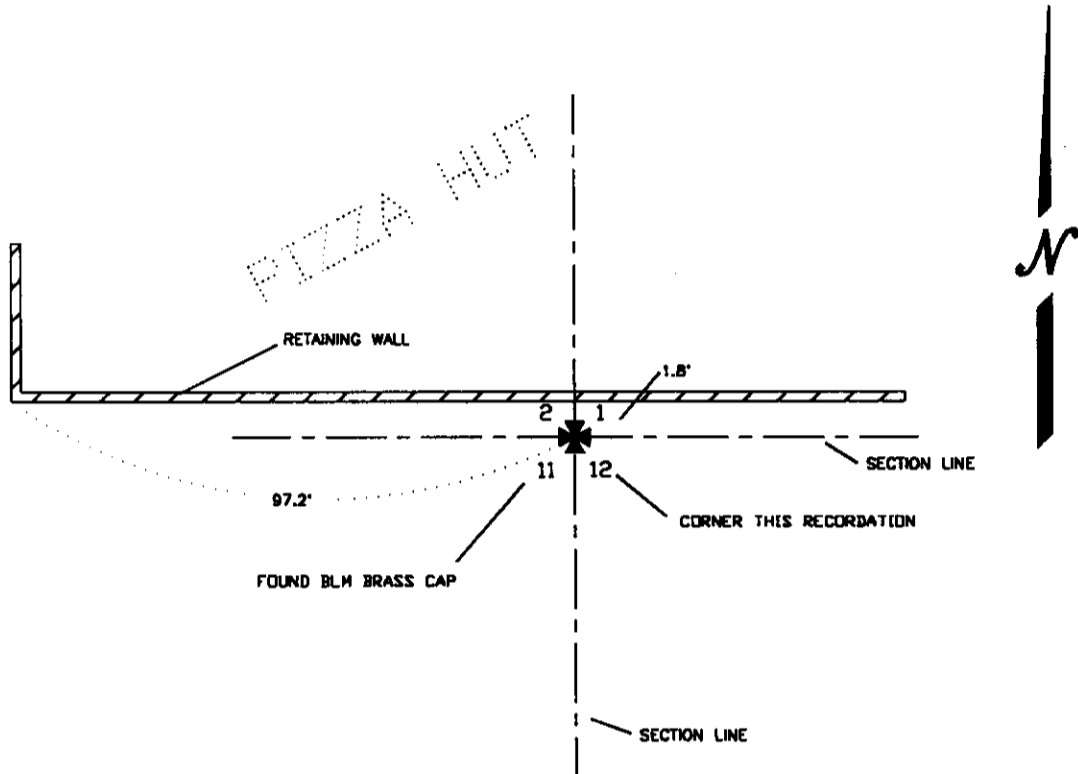
Cross Index No. E-21 T. 33N., R. 6W., PMM

CERTIFIED LAND CORNER RECORD

CORNER SOUTHWEST CORNER SEC. 1 T 33 N R 6 W COUNTY GLACIER

RECORD: ORIGINAL GOVERNMENT NOTES NOT OBTAINED FOR THIS SURVEY

FOUND: BLM BRASS CAP 1.8' FROM EDGE OF EXISTING RETAINING WALL AND 97.2 FEET FROM SOUTHWEST CORNER OF RETAINING WALL.



SCETCH OF CORNER

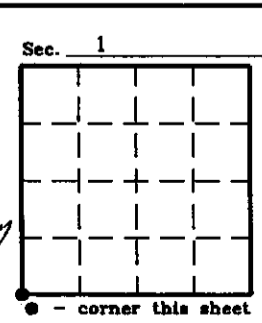
CERTIFICATION	
I, _____ certify the information shown herein is true and correct.	
Signature of Ground Party Chief _____	
JOHN M. CICON	
I, _____ certify that this Corner Recordation correctly represents work performed by me or under my direction in compliance with the "Corner Recordation Act" (70-28-101, et seq. M.C.A.).	
Signature of Surveyor and Seal _____	
Date <u>3-8-96</u>	Reg. No. <u>4039LS</u>
Employer: _____	

240567

Office of Clerk and Recorder, County of Glacier This "corner record" was filed for record on 3-25-97 at 8:03 AM was noted on the cross-index plat and is assigned page no. _____, in book no. _____

SYLVIA BERKRAM CLERK & RECORDER

Cross Index No. E-21 T 33N R 6W P.M.M.

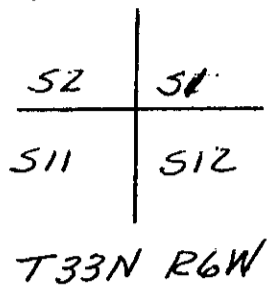


CERTIFIED LAND CORNER RECORDATION

49

DESCRIPTION OF CORNER EVIDENCE FOUND, AND ORIGINAL RECORD (IF KNOWN)

RECORD: IRON POST WITH BRASS CAP MARKED
FOUND: SAME



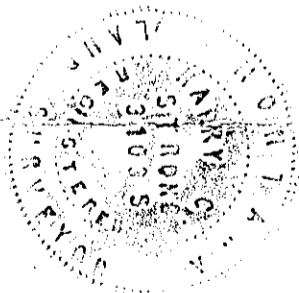
DESCRIPTION OF MONUMENT AND ACCESSORIES ESTABLISHED TO PERPETUATE THE ORIGINAL LOCATION OF THIS CORNER:

Date of work: 6-2-77

PLACED GUARD STAKES

SKETCH, WITH COURSE AND DISTANCE TO ADJACENT CORNERS IF DETERMINED IN THIS SURVEY. (MAY SKETCH OR PASTE REPRODUCTION ON REVERSE SIDE.)

Surveyor's Seal



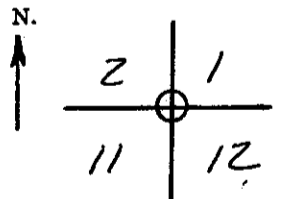
I, Harry C. Strong
certify that the information shown herein is true and correct.

Harry C. Strong
Signature of Ground Party Chief

I, Harry C. Strong
certify that I have carefully performed or reviewed the work done on the diagrammed corner as reported on this recordation form and approve the same.

Harry C. Strong
Signature of Surveyor

DIAGRAM OF CORNER:



T33N R6W

○ = Corner recorded on the sheet

31035
Registration Number

Office of Clerk and Recorder, County of.....

This "corner record" was filed for record on the day of 19....., was noted on the cross-index plat and is assigned page No....., in book No.....