

4140200

INSTRUCTIONS

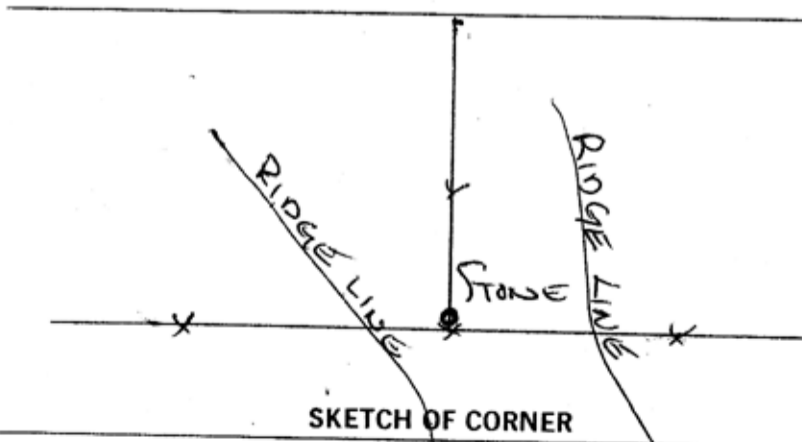
1. Original and or subsequent record used to evaluate the corner position.
2. Description of evidence found, note discrepancies in the record, state method of establishing lost or obliterated corners.
3. Description of monument and accessories set to perpetuate the corner position.
4. Sketch of corner, show all pertinent data which can best be shown in a sketch example, corner marking, topography (ties, position of accessories, etc.
5. Certification must be signed and sealed by Registered Land Surveyor in State of Montana.
6. Fill in Cross Index & Section Diagram at bottom of sheet.

CERTIFIED CORNER RECORDATION

Corner <sup>Y4</sup> S30, S31 T. 33N R. 15E P.M.M. Hill County

No ORIGINAL NOTES USED.

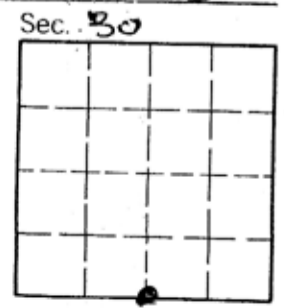
FOUND A 4" x 4" GRANITE STONE 3" ABOVE GROUND. STONE HAS A Y4 CHISELED ON NORTH SIDE. IT'S LOCATION IS AT THE INTERSECTION OF A EAST-WEST FENCE & A NORTH RUNNING FENCE. CORNER IS IN EXCELLENT CONDITION. USING FENCE AS REFERENCE I PLACE A YELLOW LOCATION TAG ON NEAREST POST.



CERTIFICATION  
 DONALD V. KING JR  
 I certify the information shown herein is true and correct.  
 Donald V. King Jr  
 Signature Ground Party Chief  
 DONALD V. KING JR  
 I certify that this Corner Record correctly represents work performed by me or under my direction in compliance with the "Corner Recordation Act" (70-22-101, et seq., M.U.A.)  
 Donald V. King Jr  
 Signature of Surveyor & Seal  
 Date: 8/10/83 Reg. No. 52125  
 Employer: King Survey

Office of Clerk and Recorder, County of HILL 468523. This "corner record" was filed for record on the August 19 day of 1983 was noted on the cross-index plat and is assigned page No. XXX, in book No. XXX

DIANE E. MELLEM  
 County Official  
 Carolyn Caluck DEPUTY  
 Cross Index No. T. R. PMM



FEE: NONE

V-3 33 15

• - corner this sheet