

INSTRUCTIONS

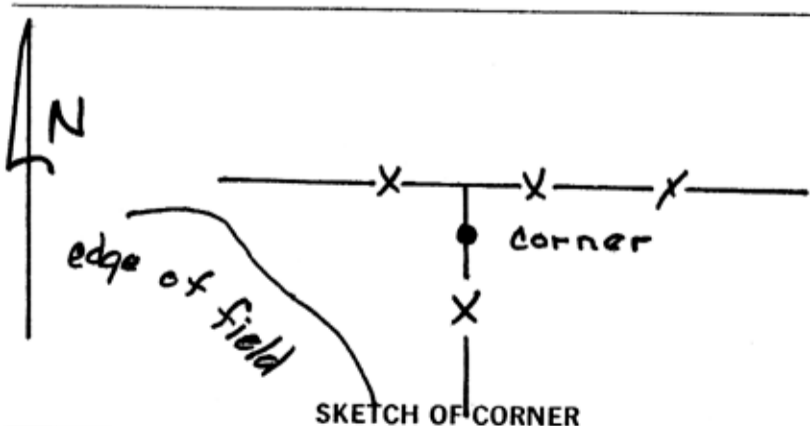
1. Original and or subsequent record used to evaluate the corner position.
2. Description of evidence found, note discrepancies in the record, state method of establishing lost or obliterated corners.
3. Description of monument and accessories set to perpetuate the corner position.
4. Sketch or corner, show all pertinent data which can best be shown in a sketch example, corner marking, topography ties, position of accessories, etc.
5. Certification must be signed and sealed by Registered Land Surveyor in State of Montana.
6. Fill in Cross Index & Section Diagram at bottom of sheet.

CERTIFIED CORNER RECORDATION

Corner 1/4 21, 28 T. 33 N R. 15 E P.M.M. Hill. County

Found 8" x 6" Stone (sandstone), 6" above ground marked 1/4 on the north side of stone. Said stone is in good condition and in a north-south fence about 20+ feet south of an intersection with an east-west fence.

Established one accessory which is an yellow M.A.R.L.S. tag nailed on a fence post north of corner.



CERTIFICATION

I, _____ certify the information shown herein is true and correct.

Signature Ground Party Chief
Donald V. Kinsman

I, _____ certify that this Corner Record correctly shows the work performed by me or under my direction in compliance with the "Corner Recordation Act" (70-22-101, et seq., M.C.A.)

Signature of Surveyor & Seal
Donald V. Kinsman

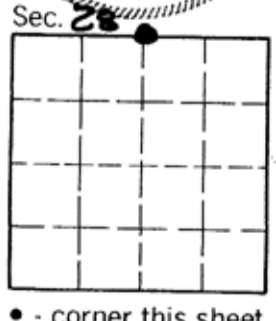
Date: 11-7-84 Reg. No. 52123

Employer: D & L Surveying, Inc.

Office of Clerk and Recorder, County of HILL. This "corner record" was filed for record on the November 8th, _____ day of 1984 was noted on the cross-index plat and is assigned page No. X XX, in book No. XXX DIANE E. MELLEM County Official

Carolyn Patrick DEPUTY
 FEE: \$ NONE

Cross Index No. R-11 T. 33 R. 15 P.M.M.



473126