

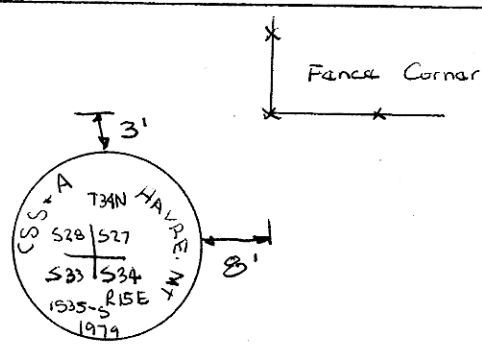
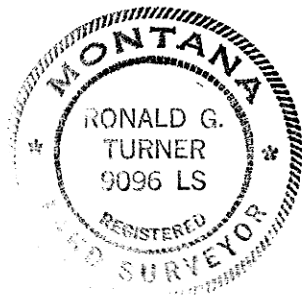
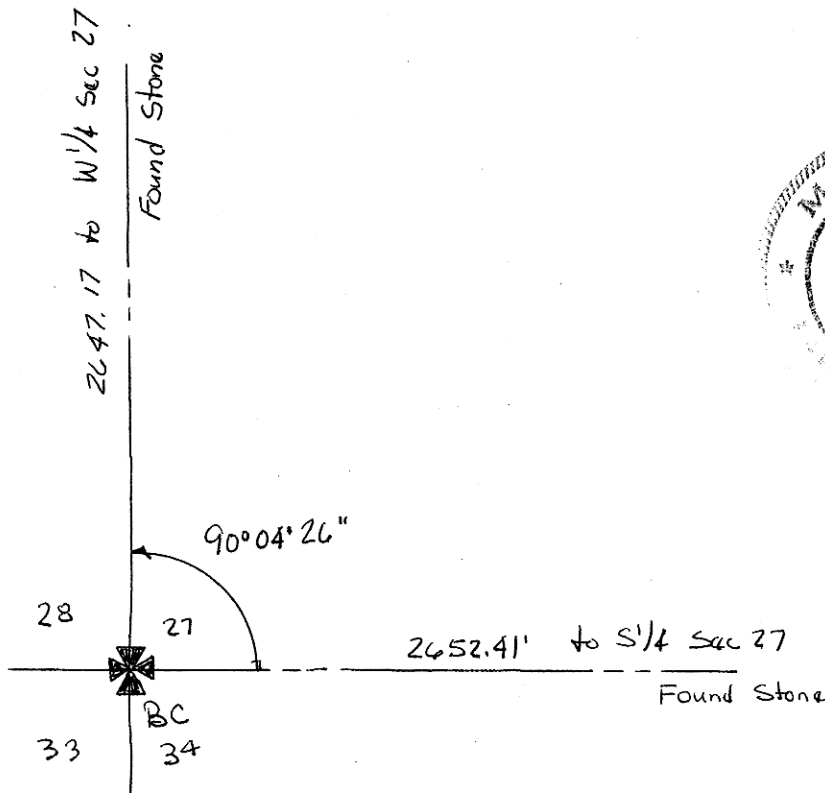
INSTRUCTIONS

1. Original and/or subsequent record used to evaluate the corner position.
2. Description of evidence found, note discrepancies in the record, state method of establishing lost or obliterated corners.
3. Description of monument and accessories set to perpetuate the corner position.
4. Sketch of corner, show all pertinent data which can best be shown in a sketch example, corner marking, topography ties, position of accessories, etc.
5. Certification must be signed and sealed by Land Surveyor registered in the State of Montana.
6. Fill in Cross Index & Section Diagram at bottom of sheet.

CERTIFIED CORNER RECORDATION

Corner SW Sec. 27 T. 33 N R. 15 E P.M.M. Hill County

1992 Found Brass Cap set by C.S.S.+A. in a mound of Stone

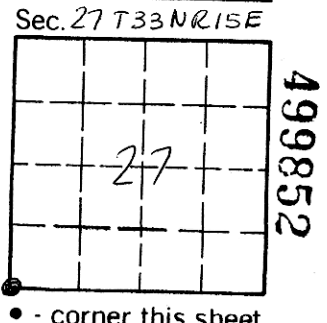


SKETCH OF CORNER

CERTIFICATION
 I, Ronald G Turner
 certify the information shown herein is true and correct.
Ronald G Turner
 Signature Ground Party Chief
 I, Ronald G Turner
 certify that this Corner Record correctly represents work performed by me or under my direction in compliance with the "Corner Recordation Act" (70-22-101, et seq., M.C.A.)
Ronald G Turner
 Signature of Surveyor & Seal
 Date: 3-13-92 Reg. No. 90965
 Employer: _____

Office of Clerk and Recorder, County of HILL. This "corner record" was filed for record on 16th of March, 1992 @ 9:15 A.M.

was noted on the cross-index plat and is assigned page No. _____ in book No. _____
DIANE E. MELLEM, CLERK & RECORDER
Carolyn Patrick, DEPUTY
 County Official



CERTIFIED LAND CORNER RECORDATION

DESCRIPTION OF CORNER EVIDENCE FOUND, AND ORIGINAL RECORD (IF KNOWN)

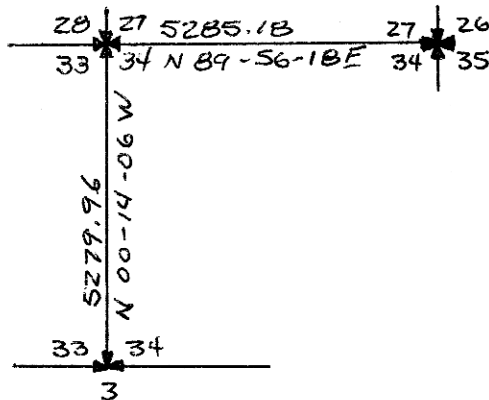
Found stone with 1-notch on the south side, and 3 notches on the east side.

DESCRIPTION OF MONUMENT AND ACCESSORIES ESTABLISHED TO PERPETUATE THE ORIGINAL LOCATION OF THIS CORNER:

Date of work: 11-10-79

Set 2½" iron pipe with 3" brass cap. Buried stone on north side of pipe.

SKETCH, WITH COURSE AND DISTANCE TO ADJACENT CORNERS IF DETERMINED IN THIS SURVEY. (MAY SKETCH OR PASTE REPRODUCTION ON REVERSE SIDE.)



Surveyor's Seal

I, Dave Strand certify that the information shown herein is true and correct.

Dave Strand

Signature of Ground Party Chief

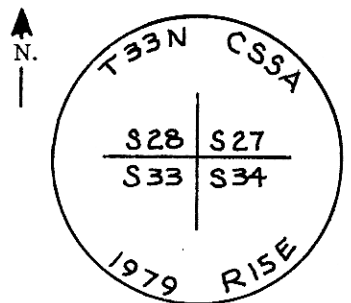
I, James B. Spring certify that I have carefully performed or reviewed the work done on the diagrammed corner as reported on this recordation form and approve the same.

James B. Spring

Signature of Surveyor

1535-3
Registration Number

DIAGRAM OF CORNER:



= Corner recorded on the sheet

454244

Office of Clerk and Recorder, County of HILL

This "corner record" was filed for record on the 4th day of March, 1980, was noted on the cross-index plat and is assigned page No. _____, in book No. _____
A.M. SOMERS
Deputy Wm. A. Hayden
County Official