

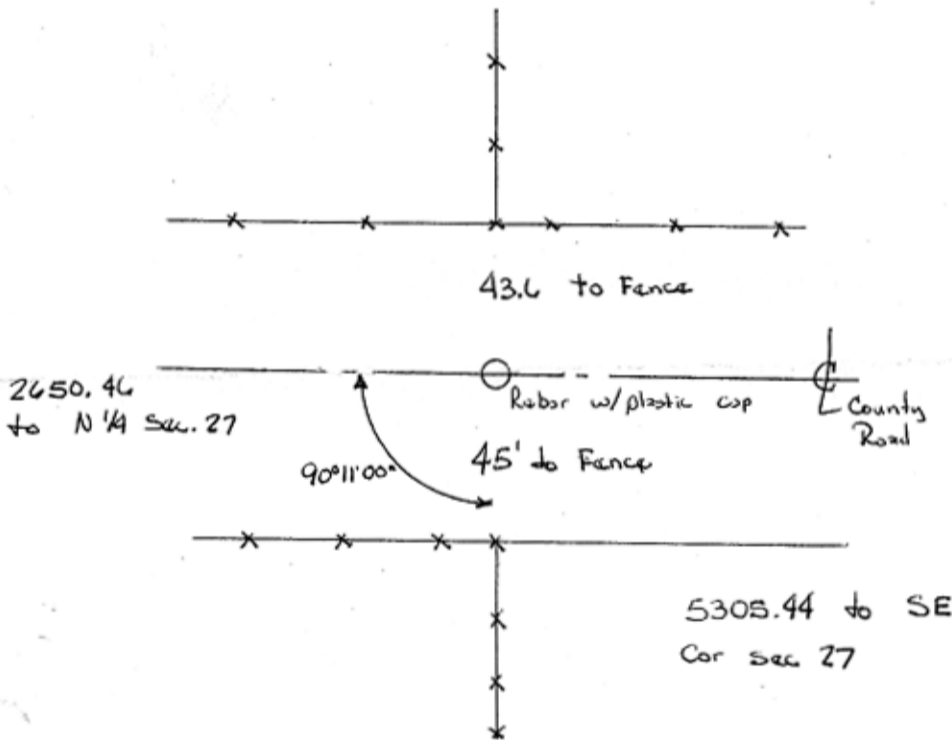
INSTRUCTIONS

1. Original and/or subsequent record used to evaluate the corner position.
2. Description of evidence found, note discrepancies in the record, state method of establishing lost or obliterated corners.
3. Description of monument and accessories set to perpetuate the corner position.
4. Sketch of corner, show all pertinent data which can best be shown in a sketch example, corner marking, topography ties, position of accessories, etc.
5. Certification must be signed and sealed by Land Surveyor registered in the State of Montana.
6. Fill in Cross Index & Section Diagram at bottom of sheet.

CERTIFIED CORNER RECORDATION

Corner NE Sec. 27 T. 33 N R. 15 E P.M.M. Hill County

1992- Found no evidence of original monument
 Set 5/8" rebar with yellow plastic cap
 stamped "TURNER 90965"
 This corner was established by double proportion using
 N¼ corner Sec. 27 (1/2" rebar as shown on COS 455785),
 SE corner Sec. 27 (Found stone), N¼ Sec 25 (Found 3/4" rebar)
 and W¼ cor Sec 22.



SKETCH OF CORNER

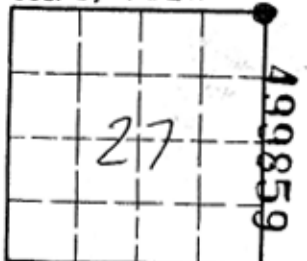
CERTIFICATION
 1. Ronald G Turner
 certify the information shown herein is true and correct.
Ronald G Turner
 Signature Ground Party Chief
 1. Ronald G Turner
 certify that this Corner Record correctly represents work performed by me or under my direction in compliance with the "Corner Recordation Act" (70-22-101, et seq., M.C.A.)
Ronald G Turner
 Signature of Surveyor & Seal
 Date: 3-13-92 Reg. No. 90965
 Employer: _____

Office of Clerk and Recorder, County of HILL. This "corner record" was filed for record on 16th of MARCH, 1992, @ 9:15 A.M.

was noted on the cross-index plat and is assigned page No. _____, in book No. _____, DIANE E. MELLEM, CLERK & RECORDER, Carolyn Patrick DEPUTY County Official

Cross Index No. R-17 T. 33 R. 15 P.M.M.

Sec. 27 T33 N15 E



• - corner this sheet