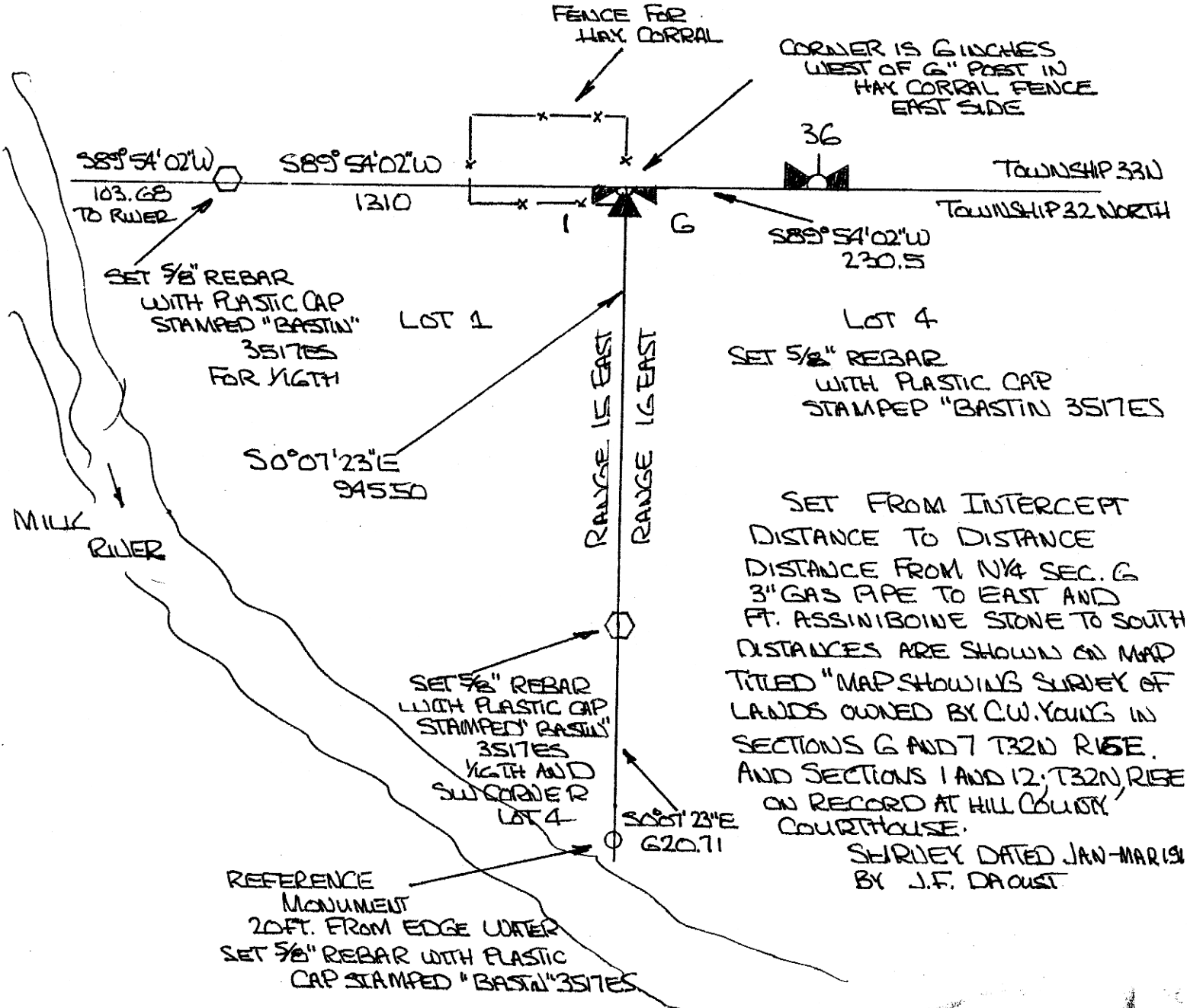


**INSTRUCTIONS**

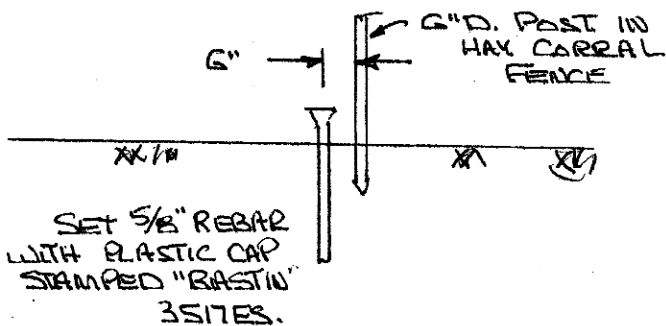
1. Original and/or subsequent record used to evaluate the corner position.
2. Description of evidence found, note discrepancies in the record, state method of establishing lost or obliterated corners.
3. Description of monument and accessories set to perpetuate the corner position.
4. Sketch of corner, show all pertinent data which can best be shown in a sketch example, corner marking, topography ties, position of accessories, etc.
5. Certification must be signed and sealed by Land Surveyor registered in the State of Montana.
6. Fill in Cross Index & Section Diagram at bottom of sheet.

**CERTIFIED CORNER RECORDATION**

Corner NORTHWEST CORNER SECTION 6 T. 32N R. 16E P.M.M. HILL County



SET FROM INTERCEPT DISTANCE TO DISTANCE DISTANCE FROM 1/4 SEC. 6 3" GAS PIPE TO EAST AND FT. ASSINIBOINE STONE TO SOUTH DISTANCES ARE SHOWN ON MAP TITLED "MAP SHOWING SURVEY OF LANDS OWNED BY C.W. YOUNG IN SECTIONS 6 AND 7 T32N R16E AND SECTIONS 1 AND 12 T32N R16E ON RECORD AT HILL COUNTY COURTHOUSE. SHIRLEY DATED JAN-MAR 19 BY J.F. DAoust



**SKETCH OF CORNER**

**CERTIFICATION**

I, RONALD F. BASTIN certify the information shown herein is true and correct.

Ronald F. Bastin  
Signature of Land Party Chief

I, RONALD F. BASTIN certify that this Corner Record correctly represents work performed by me or under my direction in compliance with the "Corner Recordation Act" (70-2-101 et seq), M.C.A.

Ronald F. Bastin  
Signature of Surveyor & Seal

Date: 04-06-94 Reg. No. 3517ES

Employer: SELF

Office of Clerk and Recorder, County of HILL. This "corner record" was filed for record on APRIL 18TH, 1994 was noted on the cross-index plat and is assigned page No. XXX, in book No. XXX

DIANE E. MELLEM,  
County Official  
Diane E. Mellem DEPUTY  
Cross Index No. \_\_\_\_\_ T. \_\_\_\_\_ R. \_\_\_\_\_ P.M.M.

Sec. 6


• - corner this sheet

508110