

216217

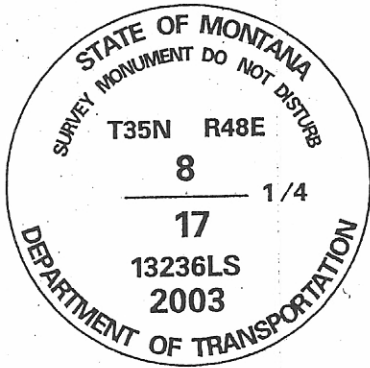
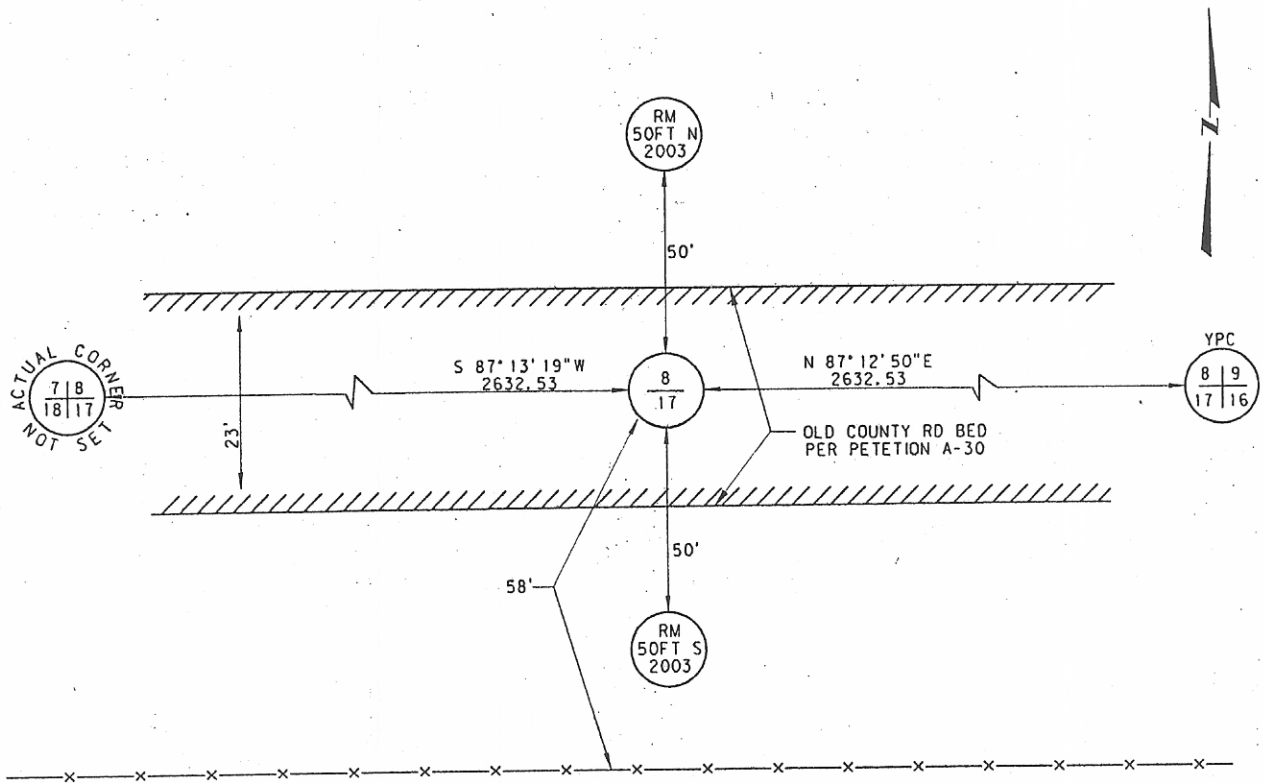
CERTIFIED CORNER RECORDATION

Corner: N1/4 Sec. 17, T.35N., R48E., P.M.M., Daniels County

Original Record: In 1904 U.S. Deputy Surveyors Loomis Minott & Carl Gleason, set a granite stone, 12x10x8 ins., 8 ins. in the ground for 1/4 sec. cor., marked 1/4 on N. face; dig pits 18x18x12 ins., E. and W. of stone, 3 ft. dist., and raise a mound of earth, 3-1/2 ft. base, 1-1/2 ft. high, N. of cor.

Found: In April 2003, MDT Survey Crew 41-86 did not find the original corner or monuments for the corner. There was no real ground control occupation to re-establish the corner from except the old County Road bed.

Set: In April 2003, MDT Survey Crew 41-86 set a 3-1/4" A.C. on a 2-1/2" x 30" flared aluminum pipe stamped as shown below. The monument was established by single proportionate measurement from a found corner to the east and a calculated corner to the west. The monument was set flush with ground near the center of the old County road bed. Records show that old road bed was built on section line. Set 2" A.C. as references 50' north and south of corner with MDT survey witness posts alongside.



SKETCH OF CORNER

CERTIFICATION

I, Brent Silha certify the information shown herein is true and correct.

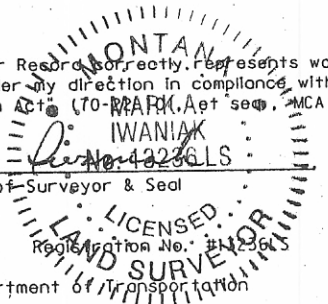
Brent Silha
Signature of Ground Party Chief

I, Mark A. Iwanik, certify that this Corner Record correctly represents work performed by me or under my direction in compliance with the "Corner Recordation Act" (70-2201, Act 2003, MCA)

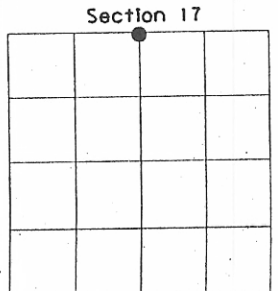
Mark A. Iwanik
Signature of Surveyor & Seal

Date: 9-12-03

Employer: Montana Department of Transportation



Office of Clerk and Recorder, County of _____, This "corner record" was filed for record on _____, was noted on cross-index plat, and is assigned Page No. _____, in Book No. _____



• = Corner this sheet

State of Montana)
County of Daniels) ss.
dated September 15, 2003 A.D.
02:20 PM Filing Fee Paid \$ 0.00

Kusty Jones County Recorder, By _____ Deputy

County Official