

CERTIFIED LAND CORNER RECORDATION

Corner E 1/4 cor Sec 9 T. 35, R. 48, P.M.M.

GLO Record

"Set a quartzite stone 12 x 10 x 8 inches in the ground 8 inches for 1/4 sec. cor. Marked 1/4 on W face, dig pits 18 x 18 x 12 inches N & S of stone 3 feet distant and raise mound of earth 3 1/2 ft base 1 1/2 ft high W of cor.

OTHER RECORD

None found

EVIDENCE FOUND

The construction of the N-W County road on the section line undoubtedly covered, moved or removed the original stone. A No 4 Re-bar was found on the section line and at the record distance and bearing from the recorded corner (SE cor sec 9) Rec 181954. No other evidence was found. Long established fences exist E and W of the point.

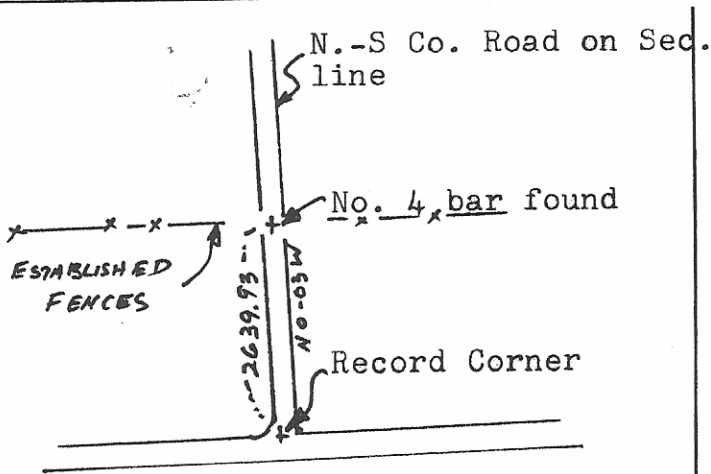
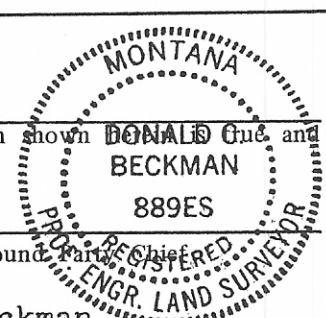


DIAGRAM OF CORNER

I, _____ certify that the information shown DONALD C. Beckman and correct.



Signature of Ground Party _____

I, Donald C. Beckman certify that I have carefully performed or reviewed the work done on the diagrammed corner as reported on this recordation form and approve the same.

Donald C Beckman
Signature of Surveyor

17 Oct 79
Date

889 ES
Registration Number

Office of Clerk and Recorder, County of Daniels

This "corner record" was filed for record on the 1 day of Nov. 19 79, was noted on the cross-index plat and is assigned page No. _____ in book No. _____.

By Carol Malone County Official Clerk Deputy