

187026

CERTIFIED LAND CORNER RECORDATION

Corner of Sec. 3, 4, 9, & 10 T. 35N R. 48E PMM

GLO Record

At 80 ch. Set a limestone 16" x 12" x 3" eleven inches in the ground for the corner of section 3, 4, 9 & 10. Marked with 5 notches on E edge. Dig pits 18 x 18 x 12 inches in each section 5 1/2 feet distant and raised a mound of earth 4 ft base, 2 ft high W of cor.

OTHER RECORD

None found

EVIDENCE FOUND

The corner falls on the W side of centerline of the existing county road which runs N-S. At this point in the roadway there has been made a substantial cut. The slope description matches the original notes, but other than that all original surface and the monument have been destroyed by the cut.

Well defined fence lines E and W of considerable age exist and correspond with the location of the corner by record distance and bearing. At this point I set a No 4 re-bar 18" long 4" below the surface of the road. Distance and bearing were obtained from the recorded SW corner of the Section, and the Section corner (NW cor sec 4) on Twp line to the North

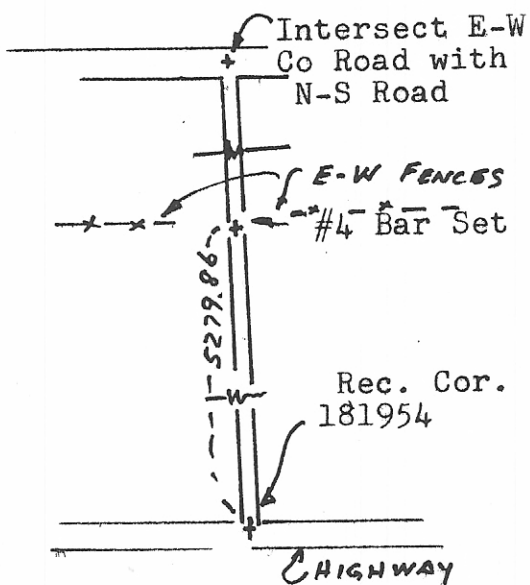


DIAGRAM OF CORNER

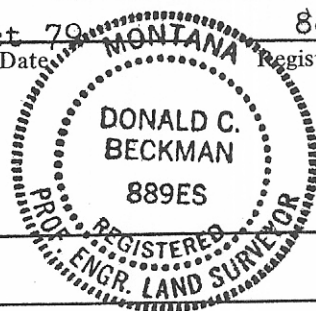
I, \_\_\_\_\_ certify that the information shown herein is true and correct.

Signature of Ground Party Chief Donald C Beckman

I, Donald C. Beckman certify that I have carefully performed or reviewed the work done on the diagrammed corner as reported on this recordation form and approve the same.

Signature of Surveyor

17 Oct 79 Date MONTANA 889 ES Registration Number



Office of Clerk and Recorder, County of Daniels

This "corner record" was filed for record on the 1 day of Nov. 19 79, was noted on the cross-index plat and is assigned page No. \_\_\_\_\_ in book No. \_\_\_\_\_ 1:00 P.M.

By Sarah Malone County Official Clerk

By \_\_\_\_\_ Deputy