

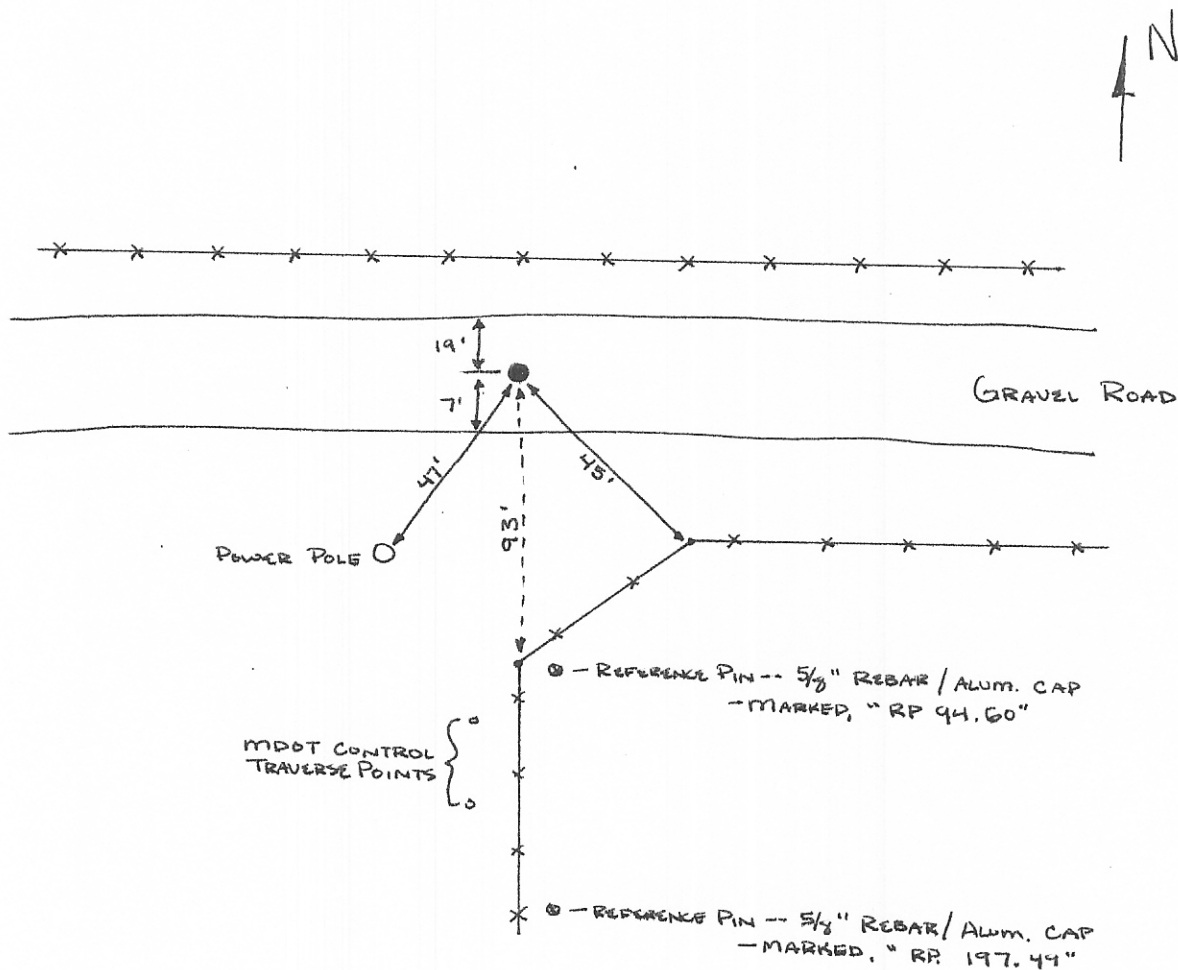
INSTRUCTIONS

1. Original and/or subsequent record used to evaluate the corner position.
2. Description of evidence found, note discrepancies in the record, state method of establishing lost or obliterated corners.
3. Description of monument and accessories set to perpetuate the corner position.
4. Sketch of corner, show all pertinent data which can best be shown in a sketch example, corner marking, topography ties, position of accessories, etc.
5. Certification must be signed and sealed by Registered Land Surveyor in State of Montana.
6. Fill In Cross Index & Section Diagram at bottom of sheet.

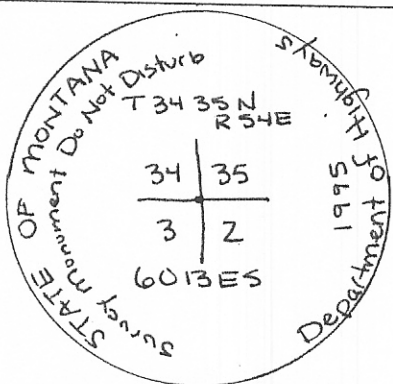
CERTIFIED CORNER RECORDATION

Corner SW CORNER SECTION 35 T. 35N R. 54E P.M.M. SHERIDAN County

- ① Used GLO notes and Quad map to search for corner — not found
- ② Falls in gravel road -- no evidence of monumentation in road or surrounding area
- ③ Set MDOH Aluminum pipe and 3" Aluminum cap — based of coordination of section breakdown. (buried 5" in gravel road)



3" Aluminum CAP



SKETCH OF CORNER

CERTIFICATION  
 I, DAN KENNEDY MONTANA  
 certify the information shown hereon is true and correct.  
Dan Kennedy  
 State of Montana  
 State of Montana  
 I, JACK R. FISHER  
 certify that this Corner Record correctly represents work performed by me or under my direction in compliance with the "Corner Recordation Act" (70-20-101)  
Jack R. Fisher  
 Registered Land Surveyor  
 Date: 5/17/95 Reg. No. 6013ES  
 Employer: THOMAS, DEAN & HOSKINS

Office of Clerk and Recorder, County of Sheridan, This "corner record" was filed for record on the July 5, 1995 at 1:00pm day of 19, was noted on the cross-index plat and is assigned page No. \_\_\_\_\_, in

book No. 242  
442223

Milton E. Hubbard  
 County Official  
Deputy

Sec. 35
