

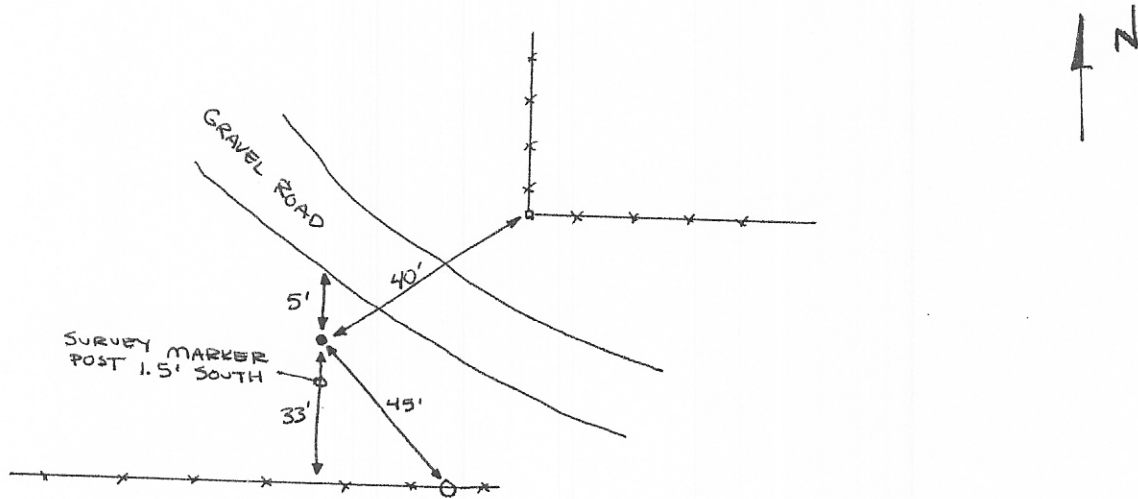
INSTRUCTIONS

1. Original and/or subsequent record used to evaluate the corner position.
2. Description of evidence found, note discrepancies in the record, state method of establishing lost or obliterated corners.
3. Description of monument and accessories set to perpetuate the corner position.
4. Sketch of corner, show all pertinent data which can best be shown in a sketch example, corner marking, topography ties, position of accessories, etc.
5. Certification must be signed and sealed by Registered Land Surveyor in State of Montana.
6. Fill in Cross Index & Section Diagram at bottom of sheet.

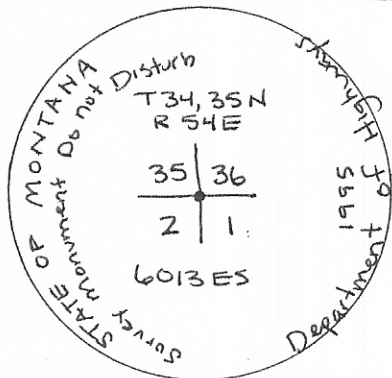
CERTIFIED CORNER RECORDATION

Corner SE CORNER SECTION 35 T. 35N R. 54E P.M.M. SHERIDAN County

- ① Used GLO notes and quad map to search for corner -- could not
- ② find any evidence of monument or any established corner
- ③ Set MDOH Aluminum pipe with 3" Aluminum cap -- established by coordination of section breakdown.



3" ALUMINUM CAP



SKETCH OF CORNER

CERTIFICATION

I, DAN KENZKA certify the information shown herein is true and correct.  
 Signature of Ground Party Chief: Dan Kenzka  
 I, JACK R. FISHER certify that this Corner Record correctly represents work performed by me or under my direction in compliance with the "Corner Recordation Act" (70-2-101, et seq., M.D.A.)  
 Signature of Surveyor & Seal: Jack R. Fisher  
 Date: 5/18/95 Reg. No. 6013 ES  
 Employer: THOMAS, DEAN & HOSKINS

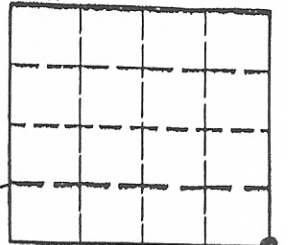
Office of Clerk and Recorder, County of Sheridan, This "corner record" was filed for record on the July 5, 1995 at 1:00 pm day of 19, was noted on the cross-index plat and is assigned page No. \_\_\_\_\_, in

book No. 239

**442220**

Walter E. Gaudin  
 County Official  
Deputy

Sec. 35



Cross Index No. Z-21 T. 35N R. 54E P.M.M.

• - corner this sheet