

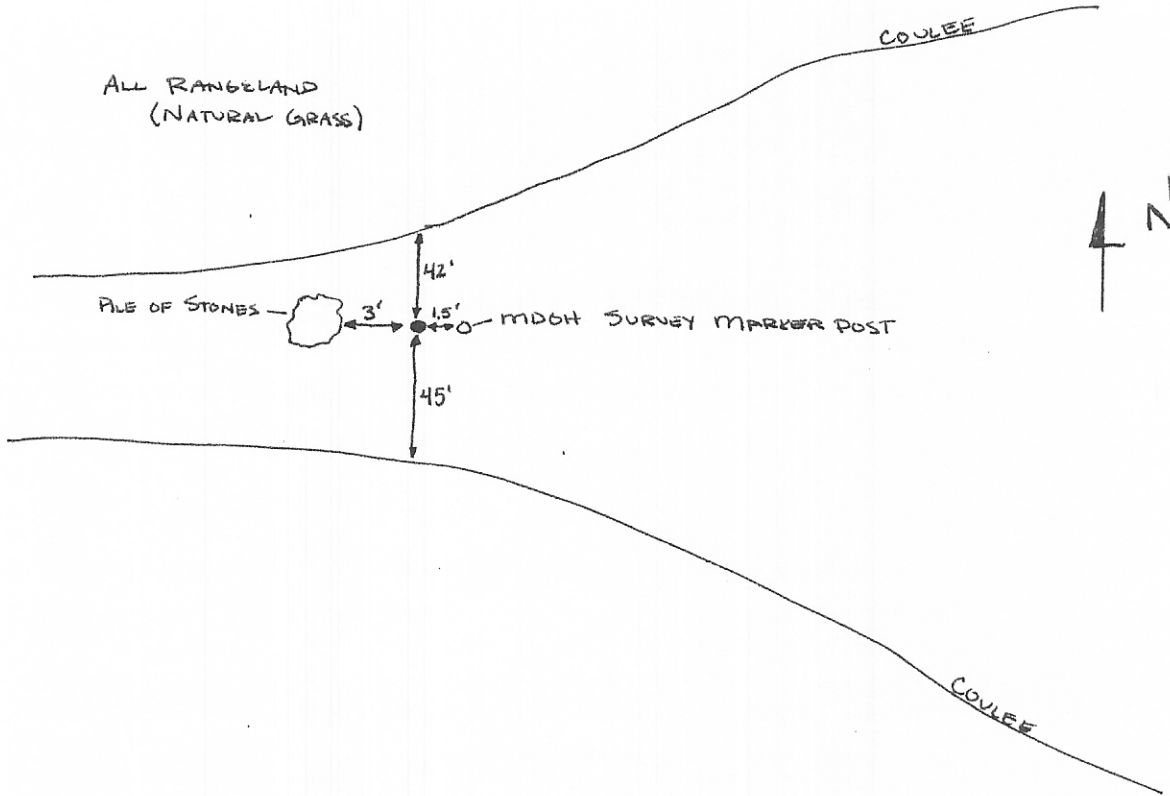
INSTRUCTIONS

1. Original and/or subsequent record used to evaluate the corner position.
2. Description of evidence found, note discrepancies in the record, state method of establishing lost or obliterated corners.
3. Description of monument and accessories set to perpetuate the corner position.
4. Sketch or corner, show all pertinent data which can best be shown in a sketch example, corner marking, topography ties, position of accessories, etc.
5. Certification must be signed and sealed by Registered Land Surveyor in State of Montana.
6. Fill in Cross Index & Section Diagram at bottom of sheet.

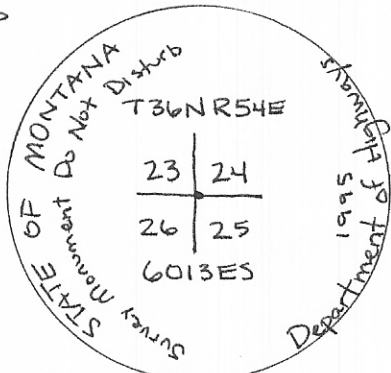
CERTIFIED CORNER RECORDATION

Corner NW CORNER SECTION 25 T. 35N R. 54E P.M.M. SHERIDAN County

- ① Found stone monument by using GLO notes and quad map.
- ② Has pile of stones 3' to the west of corner
— replaced (buried stone) with MDOH Aluminium pipe



3" ALUMINUM CAP



SKETCH OF CORNER

I, DAN KENZKA
 certify the information shown here is true and correct
Dan Kenzka
 Signature Ground Party Chief

I, JACK R. FISHER
 certify that this Corner Record correctly represents work performed
 by me or under by direction in accordance with the "Corner
 Recordation Act" (70-22-101, et seq.)
Jack R. Fisher
 Signature of Surveyor & Seal

Date: 5/18/95 Reg. No. 6013ES
 Employer: THOMAS, DEAN & HOSKINS

Office of Clerk and Recorder, County of Sheridan, This "corner
 record" was filed for record on the July 5, 1995 at 1:00 pm day of 19,
 was noted on the cross-index plat and is assigned page No. _____, in

book No. 236
442217

Milton E. Kauland
 County Official
Barbara Van Curen
 Deputy

Sec. 25
