

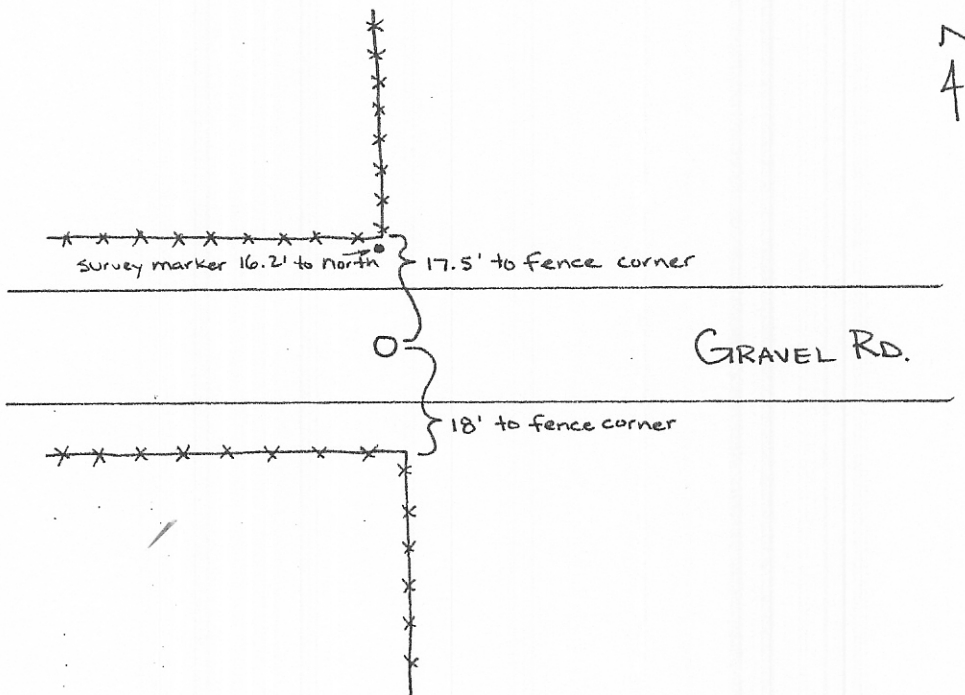
INSTRUCTIONS

1. Original and/or subsequent record used to evaluate the corner position.
2. Description of evidence found, note discrepancies in the record, state method of establishing lost or obliterated corners.
3. Description of monument and accessories set to perpetuate the corner position.
4. Sketch of corner, show all pertinent data which can best be shown in a sketch example, corner marking, topography ties, position of accessories, etc.
5. Certification must be signed and sealed by Registered Land Surveyor in State of Montana.
6. Fill in Cross Index & Section Diagram at bottom of sheet.

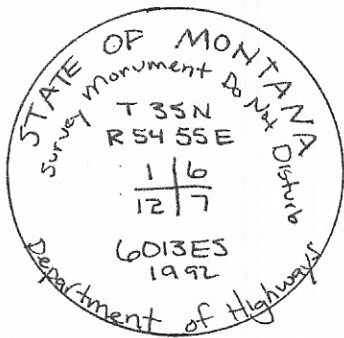
CERTIFIED CORNER RECORDATION

Corner SW Cor Sec 6 T. 35N R. 55E P.M.M. Sheridan County

- 1.) Used existing fencelines, roads, and highway plans to Reestablish
- 2.) Checked distances and bearings and compared to GLO Notes  
 ~ couldn't find original monumentation
- 3.) Set MDOH Alum. pipe (27" long with a 3/4 Alum cap)  
 ~ buried top of pipe 5" below surface because it is in the center of a gravel road.



3/4 Alum. cap



SKETCH OF CORNER

CERTIFICATION

I, DAN KENCZKA  
 certify the information shown herein is true and correct.  
Dan Kenczka  
 Signature Ground Party Chief

I, JACK R. FISHER  
 certify that this Corner Record correctly represents work performed by me or under my direction in compliance with the "Corner Recordation Act" (70-22-301, et. seq., M.C.L.A.).  
Jack R. Fisher  
 Signature of Surveyor & Seal

Date: 6/23/93 Reg. No. 6013ES  
 Employer: Thomas, Dean & Sons

Office of Clerk and Recorder, County of Sheridan, This "corner record" was filed for record on the May 6, 1999 at 1:00pm day of 1999, was noted on the cross-index plat and is assigned page No. \_\_\_\_\_, in book No. 333

452038

Cross Index No.

County Official

Bruce Vandoren - Deputy

E 1 T. 35N R. 55E P.M.M.

Sec. 6


• - corner this sheet

Yes & A