

INSTRUCTIONS

1. Original and/or subsequent record used to evaluate the corner position.
2. Description of evidence found, note discrepancies in the record, state method of establishing lost or obliterated corners.
3. Description of monument and accessories set to perpetuate the corner position.
4. Sketch of corner, show all pertinent data which can best be shown in a sketch example, corner marking, topography ties, position of accessories, etc.
5. Certification must be signed and sealed by Land Surveyor registered in the State of Montana.
6. Fill in Cross Index & Section Diagram at bottom of sheet.

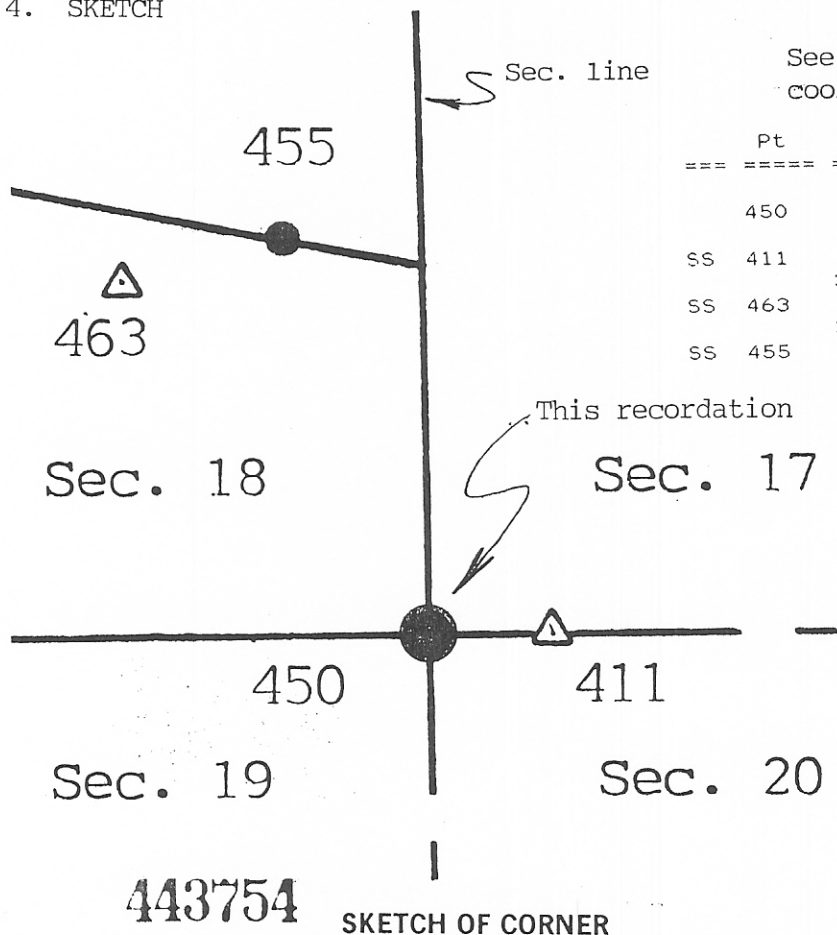
CERTIFIED CORNER RECORDATION

Corner Southeast corner of Sec. 18 T. 35N R. 55E P.M.M. Sheridan County

1. I set a #5 rebar with Al. cap at the SE cor. of sec. 18 using record distance from the NW cor. (an existing iron mon.) of Block 4 hillside addition, Plentywood, Montana. Said sec. cor. was set at record distance and on line with the NW cor. and NE cor. (existing iron mon.) of block 2 and on line with the NW cor. and NE cor. (existing iron mon.) of block 3, all plated as on the section line and the North line of said Hillside addition.
2. Found - Found a magnetic indication at AZ 349 22'28" at a horizontal distance of 7.5 ft. from SE cor. Sec. 18.
3. Monument Set - Set a #5 rebar with aluminum cap for the SE cor. of Sec. 18
(SEE SKETCH ON OTHER SIDE FOR ADDITIONAL INFORMATION)

For Azimuth basis see note #1 of Document #1673 filed at Williams Co. Register of Deeds, Williston, N.D.

4. SKETCH



See back of form for additional coordinate values/potential ties

Pt	NorthAz	HorizDis	Description
450			SECTION CORNER
SS 411	89°49'31"	30.48	3/8" X 12" I.M.
SS 463	320°31'35"	121.32	3/8" X 12" I.M.
SS 455	341°14'30"	111.16	#5 REBAR WITH AL. CAP

CERTIFICATION

I, _____
certify the information shown herein is true and correct.

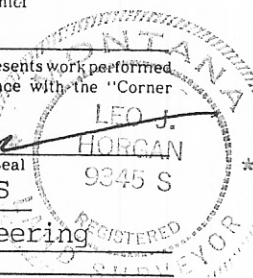
Signature Ground Party Chief
Leo J. Horgan

I, _____
certify that this Corner Record correctly represents work performed by me or under my direction in compliance with the "Corner Recordation Act" (70-22-101, et seq., M.C.A.)

Leo J. Horgan
Signature of Surveyor & Seal

Date: 3-21-96 Reg. No. 9345S

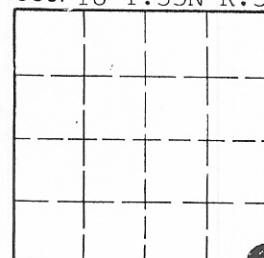
Employer: AmeriTech Engineering



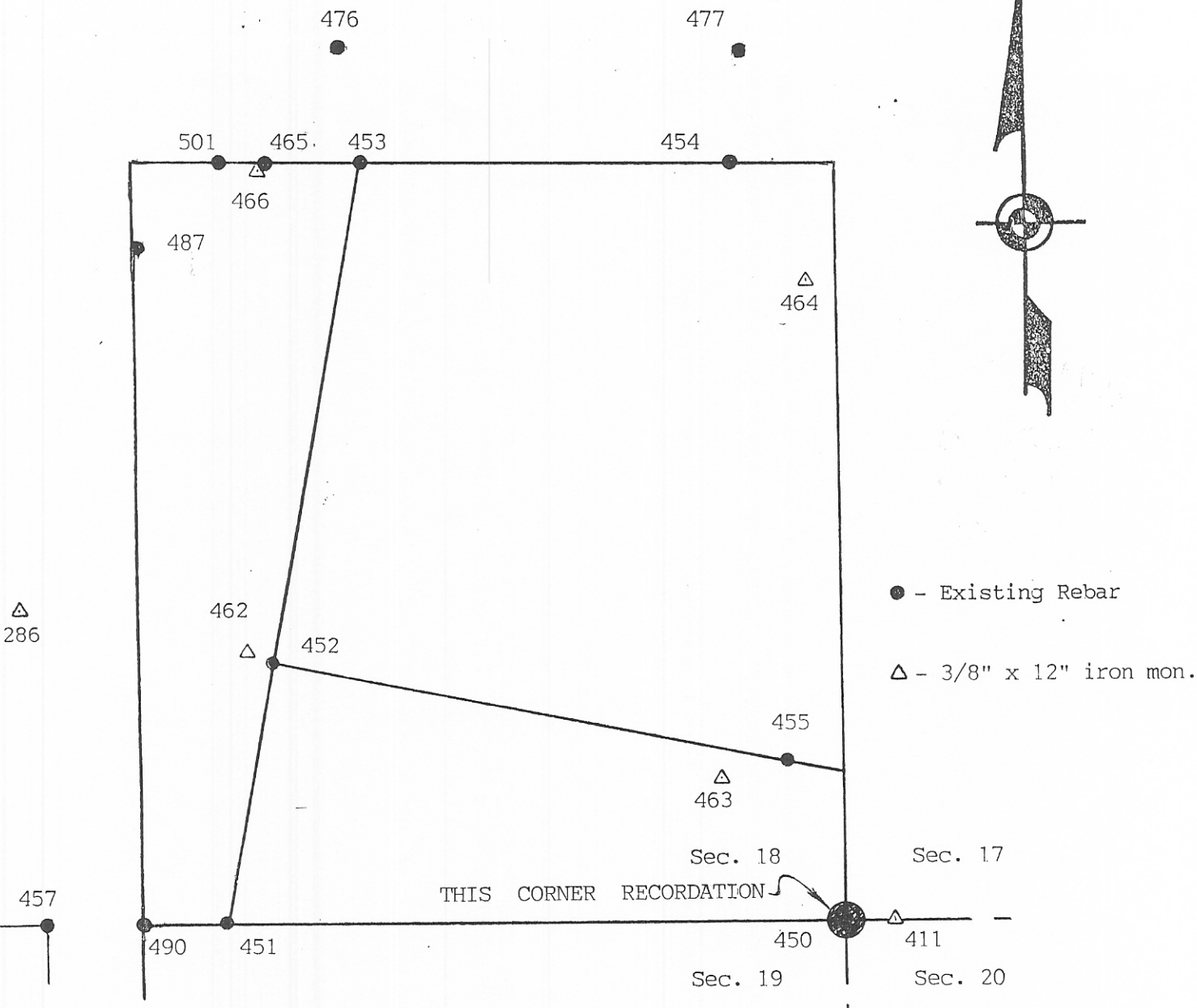
Office of Clerk and Recorder, County of Sheridan. This "corner record" was filed for record on March 22, 1996 at 11:30 AM was noted on the cross-index plat and is assigned page No. _____, in book No. #286

Milton E. Rowland
County Official
By Service Technician - Deputy
Cross Index No. N-5 T. 35N R. 55E P.M.M.

Sec. 18 T. 35N R. 55E



• - corner this sheet



● - Existing Rebar
 △ - 3/8" x 12" iron mon.

THIS CORNER RECORDATION

Pt	Northing	Easting	Pt	Northing	Easting
286	203.50	-518.22	463	93.65	-77.13
411	0.09	30.48	464	414.93	-21.80
450	0.00	0.00	465	488.72	-362.32
451	-1.20	-392.00	466	485.16	-366.26
452	167.66	-361.11	476	562.69	-315.33
453	488.93	-302.33	477	561.60	-62.93
454	489.77	-68.33	487	433.96	-445.17
455	105.25	-35.75	490	-1.36	-445.00
457	-1.54	-504.86	492	432.05	-447.06
462	174.52	-367.02	501	488.61	-390.76