

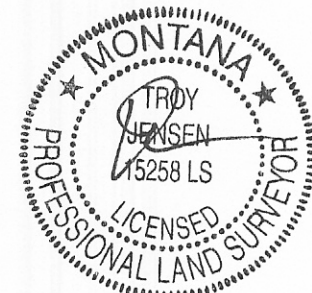
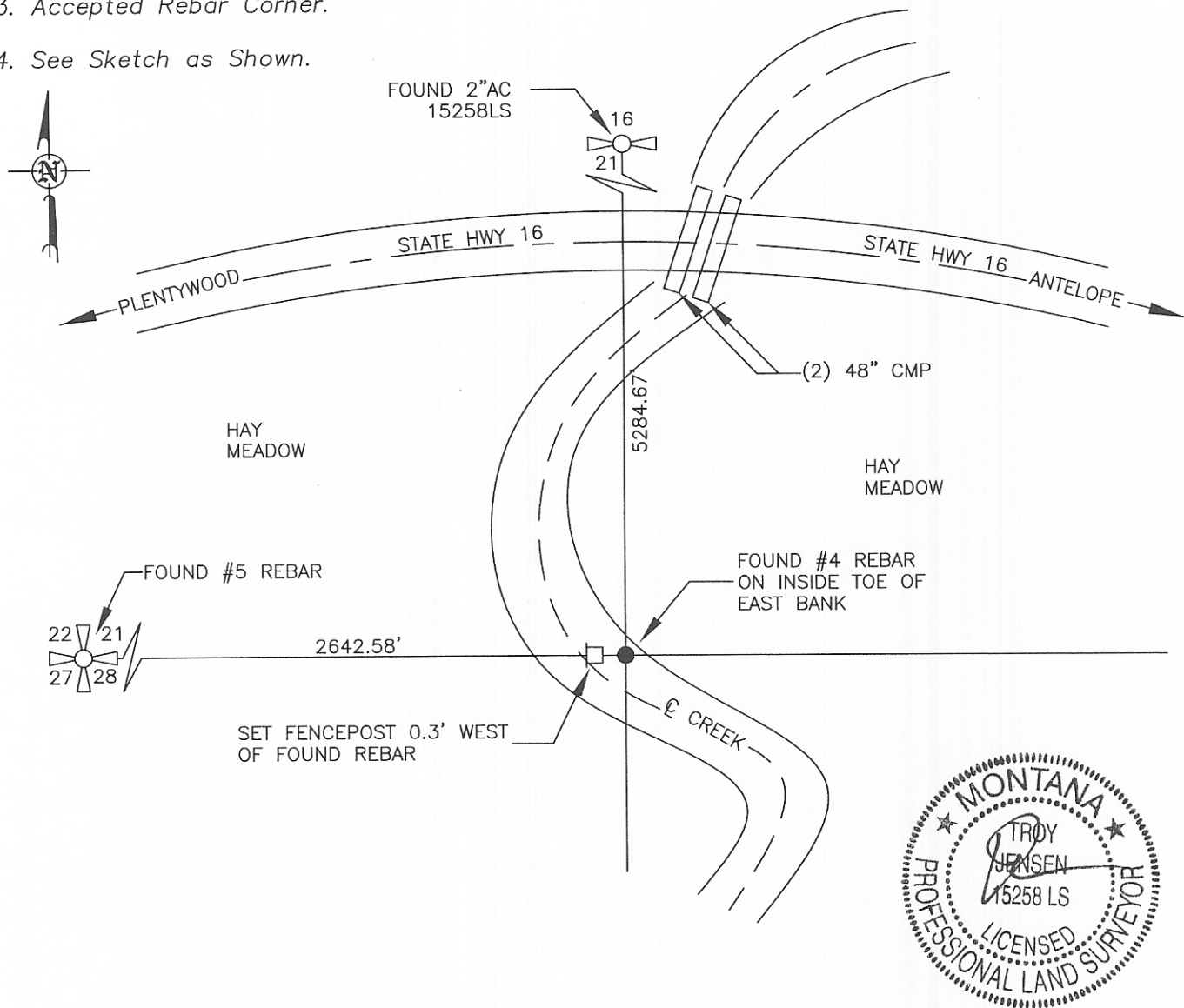
INSTRUCTIONS

1. Original a. subsequent record used to evaluate the corner position.
2. Description of evidence found, note discrepancies in the record.
3. Description of monument and accessories set to perpetuate the corner position.
4. Sketch of corner, show all pertinent data.
5. Certification must be signed and sealed by Land Surveyor licensed in the State of Montana.
6. Fill in index information and show the corner's approximate location within the section diagram.

CERTIFIED CORNER RECORDATION

Corner S1/4 SEC. 21 T. 35N R. 55E P.M.M. SHERIDAN County

1. Had copy of the Original GLO Plat and GLO notes. Had a copy of the quad map.
2. Found #4 Rebar.
3. Accepted Rebar Corner.
4. See Sketch as Shown.



SKETCH OF CORNER

CERTIFICATION
 I, DUSTY SLETVOLD
 certify the information shown herein is true and correct.
 Signature Ground Party Chief
 I, TROY JENSEN
 certify that this Corner Record correctly represents work performed by me or under my direction in compliance with the 'Corner Recordation Act' (70-22-101, et seq., M.C.A.)
 Signature of Surveyor & Seal
 Date: 1-10-06 Reg. No. 15258LS
 Employer: INTERSTATE ENGINEERING INC
 IE#S05-9-299

Office 464930 BOOK: 613 PAGE: 1648 Pages: 1
 STATE OF MONTANA SHERIDAN COUNTY
 RECORDED: 06/01/2006 2:25 KOI: CORNER REC
 JUNE A. JOHNSON CLERK AND RECORDER
 WAS | FEE: \$0.00 BY: Norma Paulson, in
 TO: INTERSTATE ENGINEERING, INC. PO BOX 648, SIDNEY, MT 59270
 book No. _____ County Official

Sec. 21

• corner this sheet

Cross Index No. R-11 T. 35N R. 55E P.M.M.

Adopted July 1, 1981, Montana Board of Professional Engineers & Land Surveyors

543