

INSTRUCTIONS

1. Original and or sequent record used to evaluate the corner position.
2. Description of evidence found, note discrepancies in the record, state method of establishing lost or obliterated corners.
3. Description of monument and accessories set to perpetuate the corner position.
4. Sketch or corner, show all pertinent data which can best be shown in a sketch example, corner marking, topography ties, position of accessories, etc.
5. Certification must be signed and sealed by Registered Land Surveyor in State of Montana.
6. Fill in Cross Index & Section Diagram at bottom of sheet.

CERTIFIED CORNER RECORDATION

Corner E 1/4 cor. of section 14 35N R. 55E P.M.M. Sheridan County

Set a granite stone, 14X9X6 ins., 9 ins. in the ground for 1/4 sec. cor., marked 1/4 on W. face; dig pits 18X18X12 ins. N. and S. of stone, 3ft. dist., and raise a mound of earth, 3 1/2ft. base, 1 1/2ft. high, W. of cor.

See Attached Drawing

SKETCH OF CORNER

CERTIFICATION

I, Calvin O. Heinly certify the information shown herein is true and correct.

Calvin Heinly
Signature Ground Party Chief

I, _____ certify that this Corner Record correctly represents work performed by me or under my direction in compliance with the "Corner Recordation Act" (70-22-101, et seq., M.D.A.)

T. Nelson
Signature of Surveyor & Seal

Date: _____ Reg. No. _____

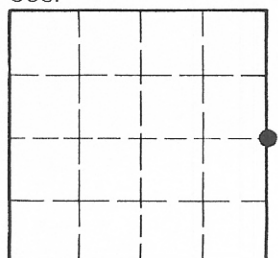
Employer: _____

Office of Clerk and Recorder, County of Sheridan. This "corner record" was filed for record on the Jan 28 day of 1982, was noted on the cross-index plat and is assigned page No. _____, in book No. _____

[Signature]
County Official

Cross Index No. L-21 T. 35 R. 55 P.M.M.

Sec.




• - corner this sheet

#24

For Recordation
 Sheridan Co., Mont.

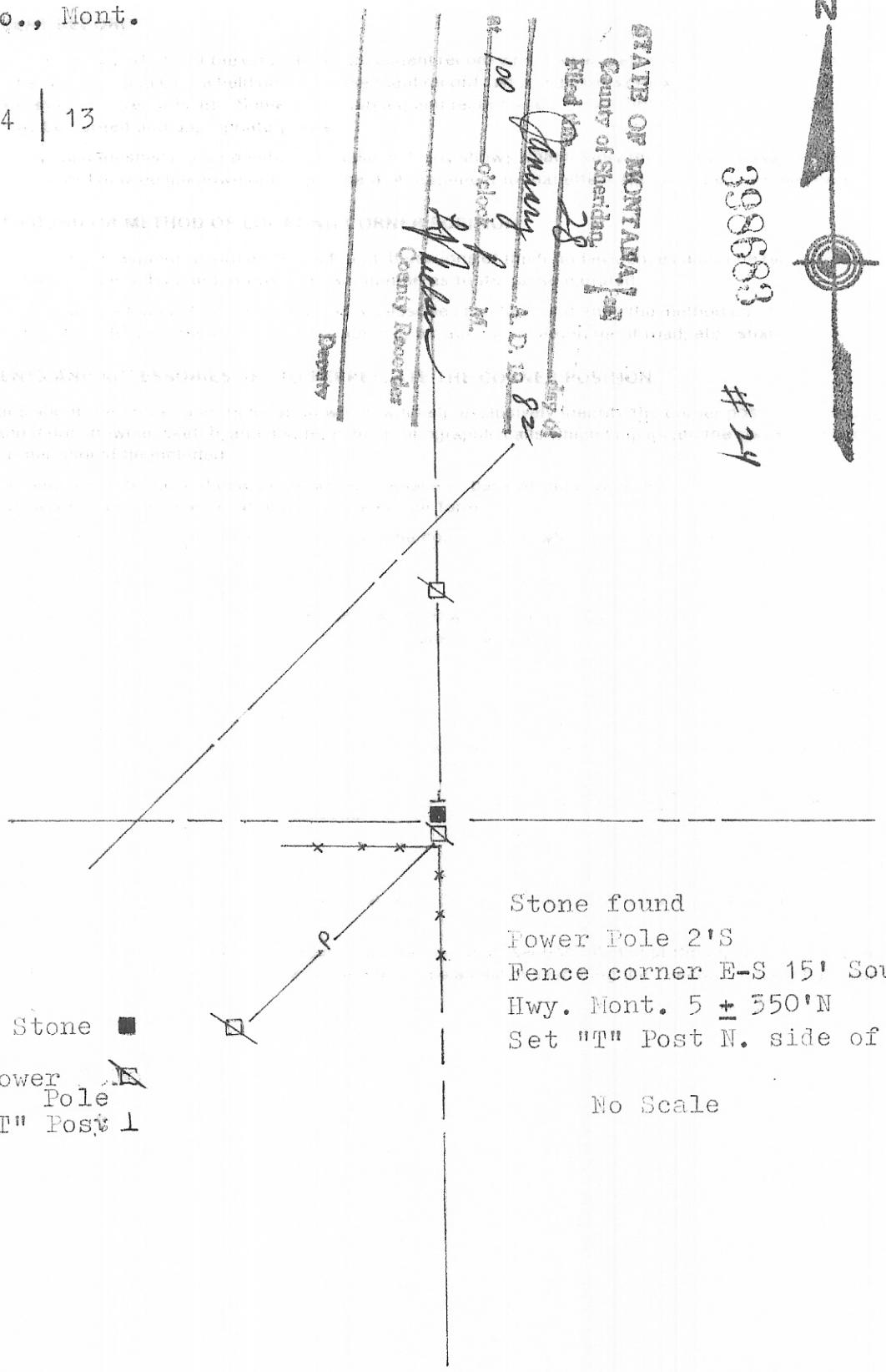
14 | 13

398683 #24



STATE OF MONTANA
 County of Sheridan

Filed 28 day of January
 at 100 o'clock P. M. A. D. 19 82
[Signature]
 County Recorder



Stone found
 Power Pole 2'S
 Fence corner E-S 15' South
 Hwy. Mont. 5 + 350'N
 Set "T" Post N. side of stone

No Scale

Stone ■
 Power Pole ◻
 "T" Post ⊕

Powers Elevation Co., Inc.
 Box 1611
 Williston, N.D. 58801



TOLERANCES (EXCEPT AS NOTED)	REVISIONS			DRAWN BY	SCALE	MATERIAL
	NO.	DATE	BY			
DECIMAL ±	1			CHK'D TRACED	DATE	DRAWING NO.
FRACTIONAL ±	2				APP'D	
ANGULAR ±	3					
	4					
	5					