

INSTRUCTIONS

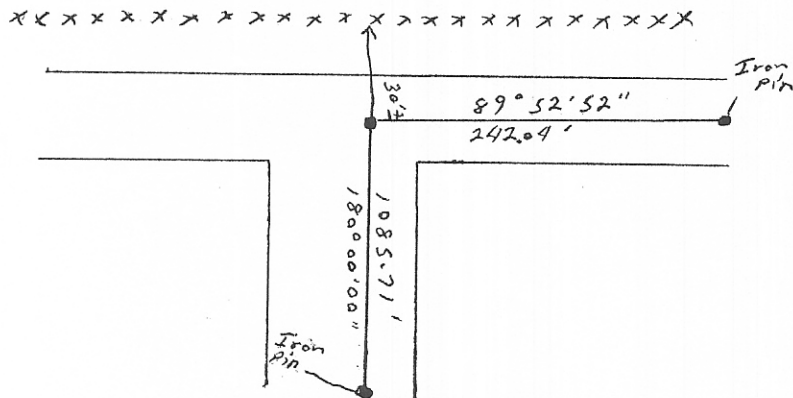
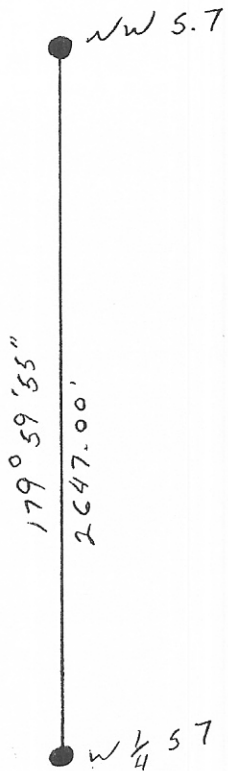
FILM 609 EXP 1091

1. Original and/or subsequent used to evaluate the corner position.
2. Description of evidence for discrepancies in the record, state method of establishing lost or obliterated corners.
3. Description of monument and accessories set to perpetuate the corner position.
4. Sketch of corner, show all pertinent data which can best be shown in a sketch example, corner marking, topography ties, position of accessories, etc.
5. Certification must be signed and sealed by Land Surveyor registered in the State of Montana.
6. Fill in Cross Index & Section Diagram at bottom of sheet.

CERTIFIED CORNER RECORDATION

Corner NW Sec 7 T. 35 N R. 56 E P.M.M. Sheridan County

1. G.L.O. Notes
2. $\frac{1}{2}$ " Rebar



SKETCH OF CORNER

CERTIFICATION

I, Alvin R Lambert
 Certify the information shown herein is true and correct.

Alvin R Lambert
 Signature Ground Party Chief

I, Bryan Beggs
 certify that this Corner Record correctly represents work performed by me or under my direction in compliance with the "Corner Recordation Act" (70-22-101, et seq., M.C.A.)

Bryan Beggs
 Signature of Surveyor & Seal
 BRYAN BEGGS
 REG. NO. 215 E S
 REGISTERED ENGINEER & LAND SURVEYOR

Date: 11-18-04 Reg. No. 215 E S

Employer: Kochers, Le...

Office of Clerk and Recorder, County of Sheridan, State of Montana
 BOOK: 609 PAGE: 1091 Pages: 1 This "corner"
 STATE OF MONTANA SHERIDAN COUNTY
 RECORDED: 11/19/2004 11:00 KOI: CORNER REC
 MILTON E. HOVLAND CLERK AND RECORDER
 FEE: \$0.00 BY: Dorise Van Arman, in
 TO: FILE 481

County Official

Cross Index No. E-1 T. 35N R. 56E PMM

• - Corner this sheet