

CORNER FOR SEC 12, T 36N, R 28W, MPM, WCOLN COUNTY, MONTANA

DESCRIPTION OF CORNER EVIDENCE FOUND, AND ORIGINAL RECORD (IF KNOWN)

ORIGINAL 1903 GLO NOTES, VOL 5 PAGE NOT KNOWN
CORNER DESC: LAVA STONE 18" x 12" x 12", 12" IN GROUND, MKD WITH 2 NOTCHES ON N. & 4 NOTCHES ON S. EDGE
WITNESS MARKS: 20" TAMARACK BEARS N 21° 30' W, 30 LKS, MKD T 36N, R 28W, S 12
24" TAMARACK BEARS S 54° W, 70 LKS, MKD T 36N, R 28W, S 13

FOUND: SEC COR STONE FOUND IN PLACE WITH 2 NOTCHES ON N. & 4 NOTCHES ON S. EDGE.
20" STUMP BEARS N 21° 30' W, 30 LKS, VISIBLE MARKINGS
24" STUMP BEARS S 54° W, 70 LKS, VISIBLE MARKINGS

DESCRIPTION OF MONUMENT AND ACCESSORIES ESTABLISHED TO PERPETUATE THE ORIGINAL LOCATION OF THIS CORNER:

SET IRON PIPE WITH BRONZE CAP
BRONZE CAP STAMPED

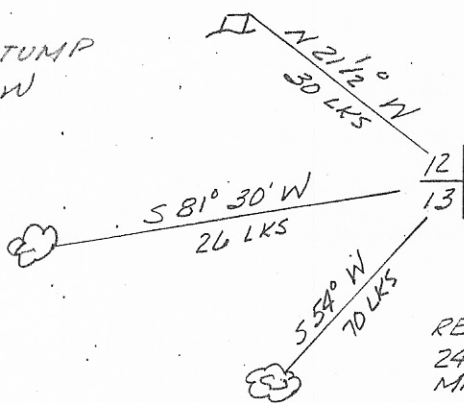
Date of work: 14 OCT 1966

T 36N R 28W
512
513
C O F E 1966

MARKED 14" PINE BEARS S 81° 30' W, 26 LKS, MKD FS/RM BT.

SKETCH, WITH COURSE AND DISTANCE TO ADJACENT CORNERS IF DETERMINED IN THIS SURVEY. (MAY SKETCH OR PASTE REPRODUCTION ON REVERSE SIDE.)

RECOVERED
20" TAMARACK STUMP
MKD T 36N R 28W
512 BT



RECOVERED
24" TAMARACK STUMP
MKD T 36N, R 28W, 513 BT

SET
14" PINE
MKD FS/RM

DIAGRAM OF CORNER:

N. 12 / 13

Surveyor's Seal

I, LAVERNE L. ESTES
certify that the information shown herein is true and correct.

Signature of Lawrence L. Estes
Signature of Ground Party Chief

A STD BC STAMPED

I, LAWRENCE A. SIGNANI
certify that I have carefully performed or reviewed the work done on the diagrammed corner as reported on this recordation form and approve the same.

Signature of Lawrence A. Signani
Signature of Surveyor

T 36N R 28W
512
513
C O F E 1966

= Corner recorded on the sheet

11422
Registration Number



Office of Clerk and Recorder, County of Lincoln

This "corner record" was filed for record on the 21st day of July, 1967, at 11:40 am, was noted on the cross-index plat and assigned page No. 134, in book No. 1.

Signature of Eleanor G. Vaughn
County Official Deputy