

CERTIFIED CORNER RECORDATION

Corner 1/4 **Sec.** 15&22 **T.** 36N **R.** 27W **P.M., MT** **Lincoln** **County**

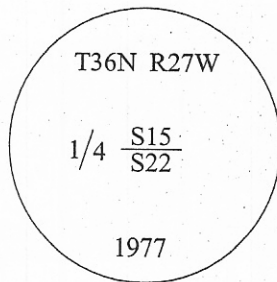
I. 1893 G.L.O. Original Record by Peter McCardell et. al.: Set a limestone, 14X12X5 ins., 10 ins. in the ground for 1/4 sec. cor. mkd. "1/4" on the N. face.

Established one bearing tree:

A fir, 14 ins. diam., bears S38°30'E, 100 lks. dist., mkd. "1/4 S BT".

Raised a mound of earth 1 1/2 ft. high, 3 1/2 ft. base alongside.

1977 B.L.M. Remonumentation Record by Larry A Christiansen: The 1/4 sec. cor. of secs. 15 and 22, monumented with a limestone, 14x12x5 ins., firmly set, 10 ins. in the ground, mkd. as described in the original record, with a mound of stone, 4 ft. base, 1 1/2 ft. high, to the N., and witnessed by the remains of the original bearing trees. At the corner position, set a 2 1/2 in. diam. aluminum post, 22 ins. in the ground, with the cap mkd. as shown:



Established one new bearing tree:

A fir, 14 ins. diam., bears S49 1/2°E, 169 lks. dist., mkd. "1/4 S22 BT".

Bury the original stone alongside and raise a flat mound of stone, 3 ft. diam., around the iron post.

II. Found a 2 1/2 in. diam. aluminum pipe, firmly set, protruding 4 ins. above the ground, with a 3 1/4 in. diam. B.L.M. brass cap mkd. as shown above.

from which:

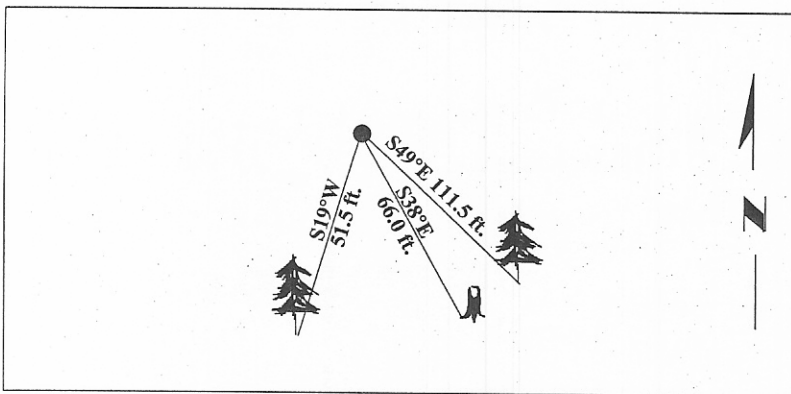
A rotten stump, bears S38°E, 66.0 ft. dist., with axe marks. (GLO-record)

A fir, 21 ins. diam., bears S49°E, 111.5 ft. dist., mkd. with visible scribe. (BLM-record)

A fir, 9 ins. diam., bears S19°W, 51.5 ft. dist., mkd. with a healed face.

III. Painted bearing trees and attached Land Survey Monument and Bearing Tree signs.

Magnetic Declination: 20° East.



SKETCH OF CORNER

CERTIFICATION

I, Mark Federman
certify the information shown herein is true and correct.

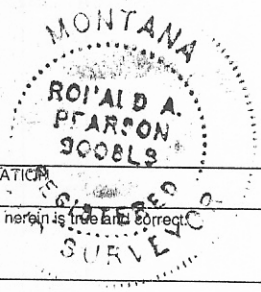
I, Ronald A. Pearson
certify that this Corner Record correctly represents work performed by me or under my direction in compliance with the "Corner Recordation Act" (70-22-101, et seq., M.C.A.)

Ronald A. Pearson
 Signature of Surveyor & Seal

Date: 04/23/97

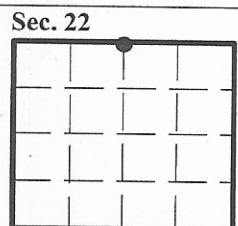
Reg. No.: 9008LS

Employer: U.S. FOREST SERVICE



Office of Clerk and Recorder, County of LINCOLN. This "corner record" was filed for record on JULY 31, 1997 was noted on the cross-index plat and is assigned page No. 9819 in book No. _____

CORAL M. CUMMINGS *By DUB*
 County Official



● - corner this sheet